

Product datasheet

Anti-KIF22 antibody [EP2747Y] ab75783

KO VALIDATED Recombinant RabMAB

★★★★★ [1 Abreviews](#) [3 References](#) [2 Images](#)

Overview

Product name	Anti-KIF22 antibody [EP2747Y]
Description	Rabbit monoclonal [EP2747Y] to KIF22
Host species	Rabbit
Tested applications	Suitable for: WB
Species reactivity	Reacts with: Human
Immunogen	Synthetic peptide. This information is proprietary to Abcam and/or its suppliers.
Positive control	WB: HeLa, 283T, and Wild-type HEK-293T cell lysates.
General notes	<p>This product has switched from a hybridoma to recombinant production method on 31st July 2023.</p> <p>This product is a recombinant monoclonal antibody, which offers several advantages including:</p> <ul style="list-style-type: none">- High batch-to-batch consistency and reproducibility- Improved sensitivity and specificity- Long-term security of supply- Animal-free production <p>For more information see here.</p> <p>Our RabMAB[®] technology is a patented hybridoma-based technology for making rabbit monoclonal antibodies. For details on our patents, please refer to RabMAB[®] patents.</p>

Properties

Form	Liquid
Storage instructions	Shipped at 4°C. Upon delivery aliquot and store at -20°C. Avoid freeze / thaw cycles.
Storage buffer	pH: 7.20 Preservative: 0.01% Sodium azide Constituents: 0.05% BSA, 40% Glycerol (glycerin, glycerine), 59% PBS
Purity	Protein A purified
Clonality	Monoclonal
Clone number	EP2747Y
Isotype	IgG

Applications

The Abpromise guarantee

Our **Abpromise guarantee** covers the use of ab75783 in the following tested applications.

The application notes include recommended starting dilutions; optimal dilutions/concentrations should be determined by the end user.

Application	Abreviews	Notes
WB	★★★★★ (1)	1/5000. Predicted molecular weight: 73 kDa.

Target

Function

Kinesin family that is involved in spindle formation and the movements of chromosomes during mitosis and meiosis. Binds to microtubules and to DNA.

Sequence similarities

Belongs to the kinesin-like protein family.
Contains 1 kinesin-motor domain.

Post-translational modifications

Ubiquitinated; mediated by SIAH1 and leading to its subsequent proteasomal degradation.
Phosphorylated upon DNA damage, probably by ATM or ATR.

Cellular localization

Nucleus. Cytoplasm > cytoskeleton.

Images



Western blot - Anti-KIF22 antibody [EP2747Y] (ab75783)

All lanes : Anti-KIF22 antibody [EP2747Y] (ab75783) at 1/5000 dilution

Lane 1 : HeLa (Human cervix adenocarcinoma epithelial cell) whole cell lysate, prepared in 1% SDS Hot lysis method

Lane 2 : 293T (Human embryonic kidney epithelial cell) whole cell lysate, prepared in 1% SDS Hot lysis method

Lysates/proteins at 15 µg per lane.

Secondary

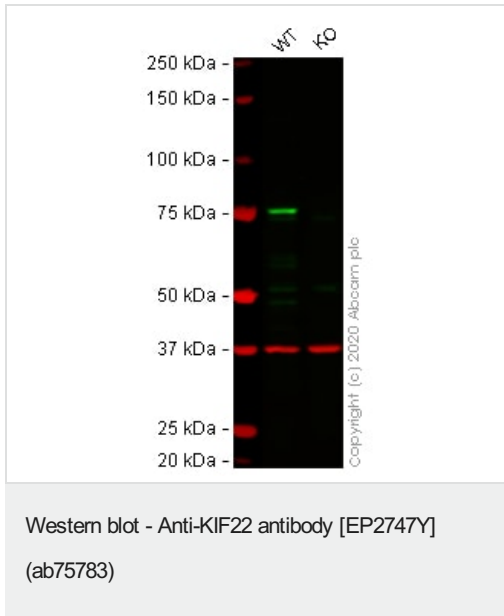
All lanes : Goat Anti-Rabbit IgG H&L (HRP) (**ab97051**) at 1/20000 dilution

Performed under reducing conditions.

Predicted band size: 73 kDa

Observed band size: 75 kDa

Exposure time: 40 seconds



All lanes : Anti-KIF22 antibody [EP2747Y] (ab75783) at 1/1000 dilution

Lane 1 : Wild-type HEK-293T cell lysate

Lane 2 : KIF22 knockout HEK-293T cell lysate

Lysates/proteins at 20 µg per lane.

Performed under reducing conditions.

Predicted band size: 73 kDa

Observed band size: 75 kDa

This image was generated using the hybridoma version of this product.

Lanes 1 - 2: Merged signal (red and green). Green - ab75783 observed at 75 kDa. Red - loading control **ab8245** (Mouse anti-GAPDH antibody [6C5]) observed at 37kDa.

ab75783 was shown to react with KIF22 in HEK-293T wild-type cells in western blot with loss of signal observed in KIF22 knockout cell line **ab266817** (KIF22 knockout cell lysate **ab258018**). Wild-type and KIF22 knockout HEK-293T cell lysates were subjected to SDS-PAGE. Membranes were blocked in 3% milk in TBS-T (0.1% Tween®) before incubation with ab75783 and **ab8245** (Mouse anti-GAPDH antibody [6C5]) overnight at 4°C at a 1 in 1000 dilution and a 1 in 20000 dilution respectively. Blots were incubated with Goat anti-Rabbit IgG H&L (IRDye® 800CW) preabsorbed (**ab216773**) and Goat anti-Mouse IgG H&L (IRDye® 680RD) preabsorbed (**ab216776**) secondary antibodies at 1 in 20000 dilution for 1 hour at room temperature before imaging.

Please note: All products are "FOR RESEARCH USE ONLY. NOT FOR USE IN DIAGNOSTIC PROCEDURES"

Our Abpromise to you: Quality guaranteed and expert technical support

- Replacement or refund for products not performing as stated on the datasheet
- Valid for 12 months from date of delivery
- Response to your inquiry within 24 hours
- We provide support in Chinese, English, French, German, Japanese and Spanish
- Extensive multi-media technical resources to help you

- We investigate all quality concerns to ensure our products perform to the highest standards

If the product does not perform as described on this datasheet, we will offer a refund or replacement. For full details of the Abpromise, please visit <https://www.abcam.com/abpromise> or contact our technical team.

Terms and conditions

- Guarantee only valid for products bought direct from Abcam or one of our authorized distributors