




Product datasheet

Anti-KIF3C antibody ab236748

[1 References](#) [3 Images](#)

Overview

Product name	Anti-KIF3C antibody
Description	Rabbit polyclonal to KIF3C
Host species	Rabbit
Tested applications	Suitable for: ICC/IF, IHC-P, WB
Species reactivity	Reacts with: Human Predicted to work with: Mouse, Rat, Cow, Orangutan 
Immunogen	Recombinant fragment corresponding to Human KIF3C aa 150-300. Database link: O14782 <div>  Run BLAST with  Run BLAST with </div>
Positive control	WB: Hela and K562 whole cell lysate. IHC-P: Human glioma tissue. ICC/IF: A549 cells.
General notes	<p>The Life Science industry has been in the grips of a reproducibility crisis for a number of years. Abcam is leading the way in addressing this with our range of recombinant monoclonal antibodies and knockout edited cell lines for gold-standard validation. Please check that this product meets your needs before purchasing.</p> <p>If you have any questions, special requirements or concerns, please send us an inquiry and/or contact our Support team ahead of purchase. Recommended alternatives for this product can be found below, along with publications, customer reviews and Q&As</p>

Properties

Form	Liquid
Storage instructions	Shipped at 4°C. Store at +4°C short term (1-2 weeks). Upon delivery aliquot. Store at -20°C long term. Avoid freeze / thaw cycle.
Storage buffer	pH: 7.40 Preservative: 0.03% Proclin 300 Constituents: 50% Glycerol (glycerin, glycerine), PBS
Purity	Protein G purified
Purification notes	Purity >95%
Clonality	Polyclonal
Isotype	IgG

Applications

The Abpromise guarantee

Our **Abpromise guarantee** covers the use of ab236748 in the following tested applications.

The application notes include recommended starting dilutions; optimal dilutions/concentrations should be determined by the end user.

Application	Abreviews	Notes
ICC/IF		1/200 - 1/500.
IHC-P		1/500 - 1/1000.
WB		1/500 - 1/5000. Predicted molecular weight: 89 kDa.

Target

Function

Microtubule-based anterograde translocator for membranous organelles.

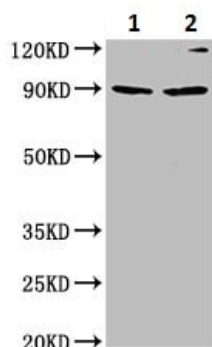
Sequence similarities

Belongs to the kinesin-like protein family. Kinesin II subfamily.
Contains 1 kinesin-motor domain.

Cellular localization

Cytoplasm > cytoskeleton.

Images



Western blot - Anti-KIF3C antibody (ab236748)

All lanes : Anti-KIF3C antibody (ab236748) at 1/500 dilution

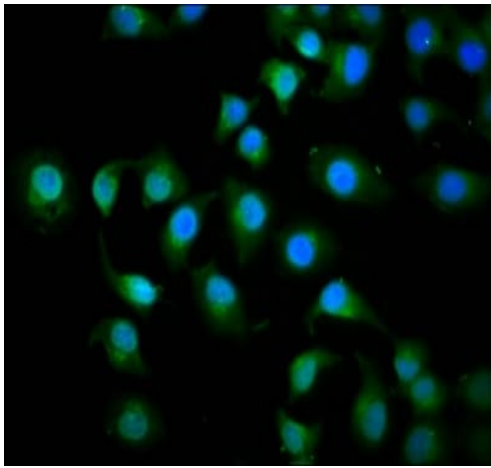
Lane 1 : HeLa (human epithelial cell line from cervix adenocarcinoma) whole cell lysate

Lane 2 : K562 (human chronic myelogenous leukemia cell line from bone marrow) whole cell lysate

Secondary

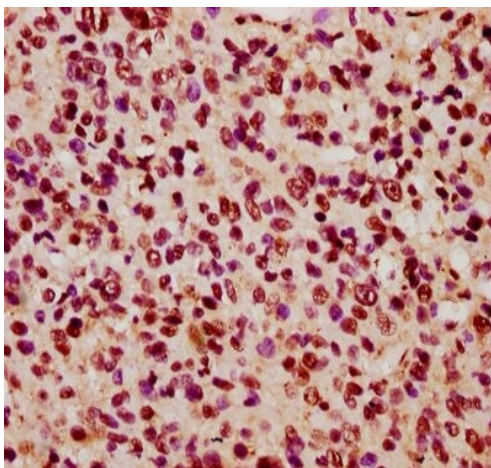
All lanes : Goat polyclonal to rabbit IgG at 1/500 dilution

Predicted band size: 89 kDa



Immunocytochemistry/ Immunofluorescence - Anti-KIF3C antibody (ab236748)

4% formaldehyde-fixed, 0.2% Triton X-100 permeabilized A549 (human lung carcinoma cell line) cells labeling KIF3C (green) using ab236748 at 1/200 dilution in ICC/IFF, followed by Alexa Fluor 488-conjugated Goat Anti-Rabbit IgG (H+L) secondary antibody. Counterstained with DAPI (blue).



Immunohistochemistry (Formalin/PFA-fixed paraffin-embedded sections) - Anti-KIF3C antibody (ab236748)

Paraffin-embedded human glioma tissue stained for KIF3C using ab236748 at 1/600 dilution in immunohistochemical analysis.

After dewaxing and hydration, antigen retrieval was mediated by high pressure in a citrate buffer (pH 6.0). Section was blocked with 10% normal goat serum 30min at RT. Then primary antibody (1% BSA) was incubated at 4°C overnight. The primary is detected by a biotinylated secondary antibody and visualized using an HRP conjugated SP system.

Please note: All products are "FOR RESEARCH USE ONLY. NOT FOR USE IN DIAGNOSTIC PROCEDURES"

Our Abpromise to you: Quality guaranteed and expert technical support

-
- Replacement or refund for products not performing as stated on the datasheet
 - Valid for 12 months from date of delivery
 - Response to your inquiry within 24 hours

 - We provide support in Chinese, English, French, German, Japanese and Spanish
 - Extensive multi-media technical resources to help you
 - We investigate all quality concerns to ensure our products perform to the highest standards

If the product does not perform as described on this datasheet, we will offer a refund or replacement. For full details of the Abpromise, please visit <https://www.abcam.com/abpromise> or contact our technical team.

Terms and conditions

- Guarantee only valid for products bought direct from Abcam or one of our authorized distributors