



Product datasheet

Anti-KIF4A/KIF4 antibody ab122227

[10 References](#) [5 Images](#)

Overview

Product name	Anti-KIF4A/KIF4 antibody
Description	Rabbit polyclonal to KIF4A/KIF4
Host species	Rabbit
Tested applications	Suitable for: ICC/IF, WB, IHC-P
Species reactivity	Reacts with: Human
Immunogen	Recombinant fragment corresponding to Human KIF4A/KIF4 aa 994-1075. Sequence: LTLQVASRQKHLPKDTLLSPDSSFYVPPKPKPSRVKEK FLEQSMIED LKYCSEHSVNEHEDGDGDDDEGDDEEWKPTKL Database link: O95239  Run BLAST with  Run BLAST with
Positive control	WB: RT-4 and U-251 MG cell lysates IHC-P: Human bone marrow tissue ICC/IF: Human cell line U-2 OS
General notes	<p>The Life Science industry has been in the grips of a reproducibility crisis for a number of years. Abcam is leading the way in addressing this with our range of recombinant monoclonal antibodies and knockout edited cell lines for gold-standard validation. Please check that this product meets your needs before purchasing.</p> <p>If you have any questions, special requirements or concerns, please send us an inquiry and/or contact our Support team ahead of purchase. Recommended alternatives for this product can be found below, along with publications, customer reviews and Q&As</p>

Properties

Form	Liquid
Storage instructions	Shipped at 4°C. Store at +4°C short term (1-2 weeks). Upon delivery aliquot. Store at -20°C long term.
Storage buffer	pH: 7.20 Preservative: 0.02% Sodium azide Constituents: 59% PBS, 40% Glycerol

Purity	Immunogen affinity purified
Clonality	Polyclonal
Isotype	IgG

Applications

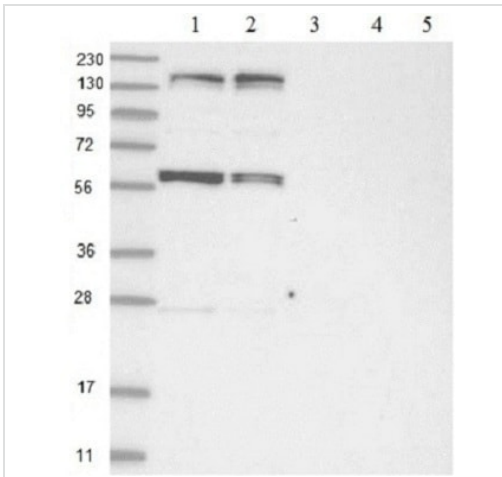
The Abpromise guarantee Our **Abpromise guarantee** covers the use of ab122227 in the following tested applications. The application notes include recommended starting dilutions; optimal dilutions/concentrations should be determined by the end user.

Application	Abreviews	Notes
ICC/IF		Use a concentration of 0.25 - 2 µg/ml.
WB		Use a concentration of 0.04 - 0.4 µg/ml.
IHC-P		1/200 - 1/500. Perform heat mediated antigen retrieval with citrate buffer pH 6 before commencing with IHC staining protocol.

Target

Function	Motor protein that translocates PRC1 to the plus ends of interdigitating spindle microtubules during the metaphase to anaphase transition, an essential step for the formation of an organized central spindle midzone and midbody and for successful cytokinesis. May play a role in mitotic chromosomal positioning and bipolar spindle stabilization.
Tissue specificity	Highly expressed in hematopoietic tissues, fetal liver, spleen, thymus and adult thymus and bone marrow. Lower levels are found in heart, testis, kidney, colon and lung.
Sequence similarities	Belongs to the kinesin-like protein family. Chromokinesin subfamily. Contains 1 kinesin-motor domain.
Cellular localization	Nucleus matrix. Cytoplasm > cytoskeleton > spindle. Midbody. Chromosome. Not present in the nucleolus. In early mitosis, associated with the mitotic spindle, in anaphase, localized to the spindle midzone and, in telophase and cytokinesis, to the midbody. In late cytokinesis, found in the center of the midbody. Associated with chromosomes at all stages of mitosis.

Images



Western blot - Anti-KIF4A/KIF4 antibody (ab122227)

All lanes : Anti-KIF4A/KIF4 antibody (ab122227) at 1/250 dilution

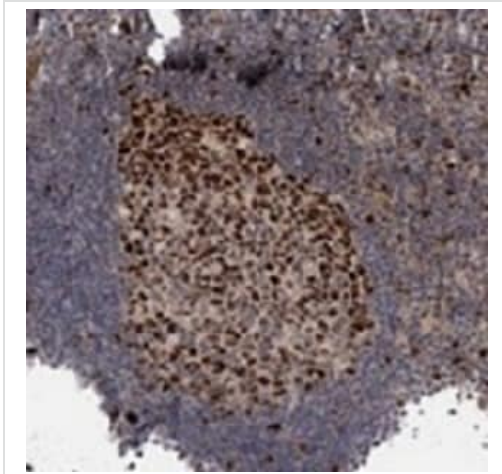
Lane 1 : RT-4 cell lysate

Lane 2 : U-251 MG cell lysate

Lane 3 : Human plasma lysate

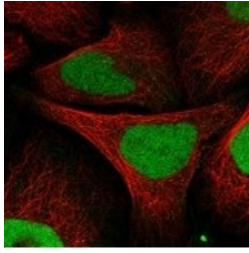
Lane 4 : Human liver lysate

Lane 5 : Human tonsil lysate



Immunohistochemistry (Formalin/PFA-fixed paraffin-embedded sections) - Anti-KIF4A/KIF4 antibody (ab122227)

ab122227, at a 1/300 dilution, staining KIF4A/KIF4 in paraffin embedded Human bone marrow tissue by Immunohistochemistry.

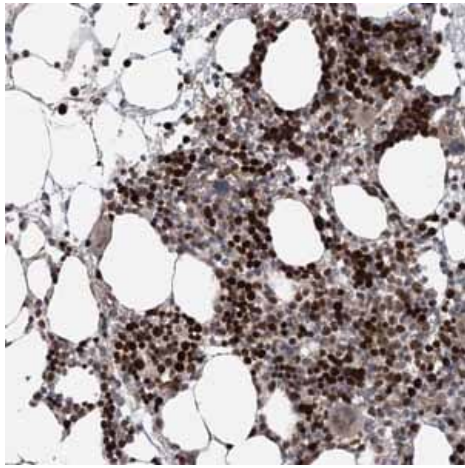


Immunocytochemistry/ Immunofluorescence - Anti-KIF4A/KIF4 antibody (ab122227)

Immunofluorescent staining of human cell line U-2 OS shows positivity in nucleus but not nucleoli using ab122227.

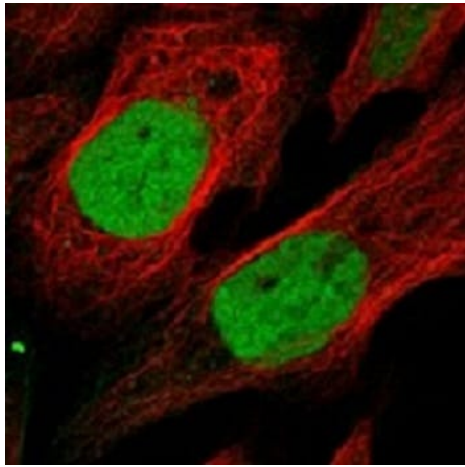
Recommended conditions:

Fixation/Permeabilization: PFA/Triton X-100



Immunohistochemistry (Formalin/PFA-fixed paraffin-embedded sections) - Anti-KIF4A/KIF4 antibody (ab122227)

Immunohistochemical staining of Human bone marrow shows strong nuclear positivity in hematopoietic cells using ab122227



ab122227, at 4 µg/ml, staining KIF4A/KIF4 in Human cell line U-2 OS by Immunofluorescence. Antibody staining is shown in green.

Immunocytochemistry/ Immunofluorescence - Anti-KIF4A/KIF4 antibody (ab122227)

Please note: All products are "FOR RESEARCH USE ONLY. NOT FOR USE IN DIAGNOSTIC PROCEDURES"

Our Abpromise to you: Quality guaranteed and expert technical support

- Replacement or refund for products not performing as stated on the datasheet
- Valid for 12 months from date of delivery
- Response to your inquiry within 24 hours
- We provide support in Chinese, English, French, German, Japanese and Spanish
- Extensive multi-media technical resources to help you
- We investigate all quality concerns to ensure our products perform to the highest standards

If the product does not perform as described on this datasheet, we will offer a refund or replacement. For full details of the Abpromise, please visit <https://www.abcam.com/abpromise> or contact our technical team.

Terms and conditions

- Guarantee only valid for products bought direct from Abcam or one of our authorized distributors