

Product datasheet

Anti-KIF5B antibody ab25715

★★★★★ [2 Abreviews](#) [4 References](#) [1 Image](#)

Overview

Product name	Anti-KIF5B antibody
Description	Rabbit polyclonal to KIF5B
Host species	Rabbit
Specificity	This antibody detects total level of endogenous kinesin protein.
Tested applications	Suitable for: WB
Species reactivity	Reacts with: Human, Pig
Immunogen	Recombinant fragment corresponding to Human KIF5B. Stalk domain of human KIF5B (amino acids 331-906) expressed in E. coli (FKHC3).
General notes	<p>The Life Science industry has been in the grips of a reproducibility crisis for a number of years. Abcam is leading the way in addressing this with our range of recombinant monoclonal antibodies and knockout edited cell lines for gold-standard validation. Please check that this product meets your needs before purchasing.</p> <p>If you have any questions, special requirements or concerns, please send us an inquiry and/or contact our Support team ahead of purchase. Recommended alternatives for this product can be found below, along with publications, customer reviews and Q&As</p>

Properties

Form	Liquid
Storage instructions	Shipped at 4°C. Store at +4°C short term (1-2 weeks). Upon delivery aliquot. Store at -20°C long term.
Storage buffer	pH: 7.40 Preservative: 0.097% Sodium azide
Purity	Protein A purified
Purification notes	Purified from rabbit serum by affinity chromatography. > 95% pure (by SDS PAGE).
Clonality	Polyclonal
Isotype	IgG

Applications

The Abpromise guarantee

Our **Abpromise guarantee** covers the use of ab25715 in the following tested applications.

The application notes include recommended starting dilutions; optimal dilutions/concentrations should be determined by the end user.

Application	Abreviews	Notes
WB	★★★★★ (1)	1/1000. Predicted molecular weight: 110 kDa.

Target

Function

Microtubule-dependent motor required for normal distribution of mitochondria and lysosomes.

Sequence similarities

Belongs to the TRAFAC class myosin-kinesin ATPase superfamily. Kinesin family. Kinesin subfamily.

Contains 1 kinesin motor domain.

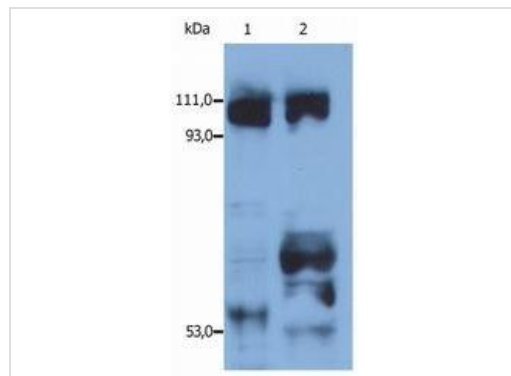
Domain

Composed of three structural domains: a large globular N-terminal domain which is responsible for the motor activity of kinesin (it hydrolyzes ATP and binds microtubule), a central alpha-helical coiled coil domain that mediates the heavy chain dimerization; and a small globular C-terminal domain which interacts with other proteins (such as the kinesin light chains), vesicles and membranous organelles.

Cellular localization

Cytoplasm, cytoskeleton. Uniformly distributed between soma and neurites in hippocampal neurons.

Images



Western blot - Anti-KIF5B antibody (ab25715)

All lanes : Anti-KIF5B antibody (ab25715)

Lane 1 : Human HEK cell line

Lane 2 : Porcine brain

Predicted band size: 110 kDa

Please note: All products are "FOR RESEARCH USE ONLY. NOT FOR USE IN DIAGNOSTIC PROCEDURES"

Our Abpromise to you: Quality guaranteed and expert technical support

- Replacement or refund for products not performing as stated on the datasheet
- Valid for 12 months from date of delivery
- Response to your inquiry within 24 hours
- We provide support in Chinese, English, French, German, Japanese and Spanish

- Extensive multi-media technical resources to help you
- We investigate all quality concerns to ensure our products perform to the highest standards

If the product does not perform as described on this datasheet, we will offer a refund or replacement. For full details of the Abpromise, please visit <https://www.abcam.com/abpromise> or contact our technical team.

Terms and conditions

- Guarantee only valid for products bought direct from Abcam or one of our authorized distributors