

## Product datasheet

### Anti-KIF5B antibody ab5629

★★★★★ [2 Abreviews](#) [15 References](#) [3 Images](#)

#### Overview

<b>Product name</b>	Anti-KIF5B antibody
<b>Description</b>	Rabbit polyclonal to KIF5B
<b>Host species</b>	Rabbit
<b>Specificity</b>	This antibody is specific for KIF5B and does not detect other kinesin isoforms.
<b>Tested applications</b>	<b>Suitable for:</b> ICC/IF, WB
<b>Species reactivity</b>	<b>Reacts with:</b> Mouse, Rat, Human
<b>Immunogen</b>	Synthetic peptide corresponding to Human KIF5B aa 376-396. Sequence: IDEQFDKEKANLEAFTVDKDI  Database link: <a href="#">P33176</a> (Peptide available as <a href="#">ab41782</a> )

 [Run BLAST with](#)

 [Run BLAST with](#)

#### General notes

The Life Science industry has been in the grips of a reproducibility crisis for a number of years. Abcam is leading the way in addressing this with our range of recombinant monoclonal antibodies and knockout edited cell lines for gold-standard validation. Please check that this product meets your needs before purchasing.

If you have any questions, special requirements or concerns, please send us an inquiry and/or contact our Support team ahead of purchase. Recommended alternatives for this product can be found below, along with publications, customer reviews and Q&As

#### Properties

<b>Form</b>	Liquid
<b>Storage instructions</b>	Shipped at 4°C. Store at +4°C short term (1-2 weeks). Upon delivery aliquot. Store at -20°C or -80°C. Avoid freeze / thaw cycle.
<b>Storage buffer</b>	Preservative: 0.05% Sodium azide Constituents: 0.1% BSA, 99% PBS
<b>Purity</b>	Immunogen affinity purified
<b>Clonality</b>	Polyclonal
<b>Isotype</b>	IgG

## Applications

### The Abpromise guarantee

Our **Abpromise guarantee** covers the use of ab5629 in the following tested applications.

The application notes include recommended starting dilutions; optimal dilutions/concentrations should be determined by the end user.

Application	Abreviews	Notes
ICC/IF	★★★★★ (1)	1/250.
WB		1/2000 - 1/6000. Predicted molecular weight: 110 kDa. Can be blocked with <b>Human KIF5B peptide (ab41782)</b> .

## Target

### Function

Microtubule-dependent motor required for normal distribution of mitochondria and lysosomes.

### Sequence similarities

Belongs to the TRAFAC class myosin-kinesin ATPase superfamily. Kinesin family. Kinesin subfamily.

Contains 1 kinesin motor domain.

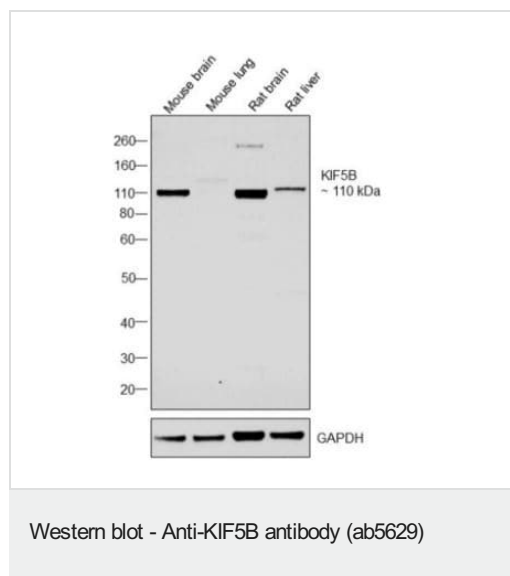
### Domain

Composed of three structural domains: a large globular N-terminal domain which is responsible for the motor activity of kinesin (it hydrolyzes ATP and binds microtubule), a central alpha-helical coiled coil domain that mediates the heavy chain dimerization; and a small globular C-terminal domain which interacts with other proteins (such as the kinesin light chains), vesicles and membranous organelles.

### Cellular localization

Cytoplasm, cytoskeleton. Uniformly distributed between soma and neurites in hippocampal neurons.

## Images



**All lanes** : Anti-KIF5B antibody (ab5629) at 1/2000 dilution

**Lane 1** : Mouse brain Whole cell extract

**Lane 2** : Mouse lung Whole cell extract

**Lane 3** : Rat brain Whole cell extract

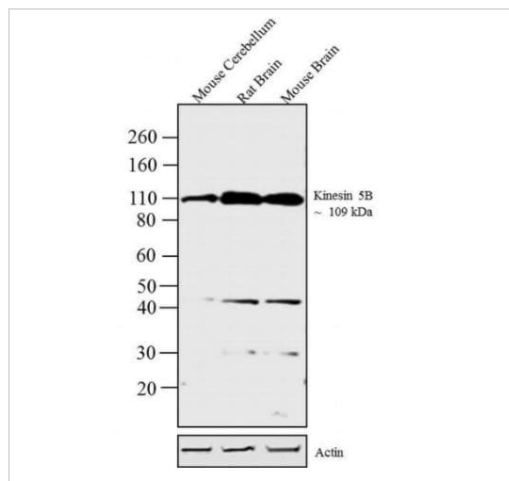
**Lane 4** : Rat liver Whole cell extract

Lysates/proteins at 40 µg per lane.

### Secondary

**All lanes** : Goat anti-Rabbit IgG (H+L),HRP at 1/4000 dilution

**Predicted band size:** 110 kDa



Western blot - Anti-KIF5B antibody (ab5629)

**All lanes :** Anti-KIF5B antibody (ab5629) at 1/4000 dilution

**Lane 1 :** Mouse Cerebellum whole cell extract

**Lane 2 :** Rat Brain whole cell extract

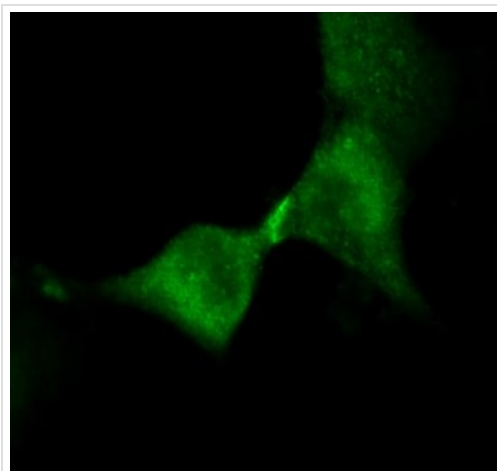
**Lane 3 :** Mouse Brain whole cell extract

Lysates/proteins at 30 µg per lane.

#### Secondary

**All lanes :** Goat anti-Rabbit IgG (H+L) HRP conjugate at 1/2500 dilution

**Predicted band size:** 110 kDa



Immunocytochemistry/ Immunofluorescence - Anti-KIF5B antibody (ab5629)

ab5629 labelling KIF5B (green) in HeLa cells. Cells fixed in 3.2% paraformaldehyde and permeabilized with 0.2% Triton X-100 for 30 minutes at 37°C were blocked with 3% BSA in PBS for 30 minutes at room temperature. Cells were incubated with the primary antibody (1:250) overnight at 4°C. A fluorescently-conjugated Goat anti-rabbit IgG was used as the secondary antibody (1:2000). Images were taken on wide-field fluorescent microscope at 63X magnification.

**Please note:** All products are "FOR RESEARCH USE ONLY. NOT FOR USE IN DIAGNOSTIC PROCEDURES"

#### Our Abpromise to you: Quality guaranteed and expert technical support

- Replacement or refund for products not performing as stated on the datasheet
- Valid for 12 months from date of delivery
- Response to your inquiry within 24 hours
- We provide support in Chinese, English, French, German, Japanese and Spanish
- Extensive multi-media technical resources to help you
- We investigate all quality concerns to ensure our products perform to the highest standards

If the product does not perform as described on this datasheet, we will offer a refund or replacement. For full details of the Abpromise, please visit <https://www.abcam.com/abpromise> or contact our technical team.

## Terms and conditions

---

- Guarantee only valid for products bought direct from Abcam or one of our authorized distributors