




Product datasheet

Anti-Kinectin 1 antibody ab231002

4 Images

Overview

| | |
|----------------------------|---|
| Product name | Anti-Kinectin 1 antibody |
| Description | Rabbit polyclonal to Kinectin 1 |
| Host species | Rabbit |
| Tested applications | Suitable for: WB, IHC-P |
| Species reactivity | Reacts with: Rat, Human Predicted to work with: Mouse  |
| Immunogen | Recombinant fragment (His-T7-tag) corresponding to Rat Kinectin 1 aa 1150-1350. (Expressed in E.coli). Database link: D4A4Z9 <div>  Run BLAST with  Run BLAST with </div> |
| Positive control | IHC-P: Rat stomach and testis tissues. WB: HeLa cell lysate; Recombinant rat Kinectin 1 protein. |
| General notes | <p>The Life Science industry has been in the grips of a reproducibility crisis for a number of years. Abcam is leading the way in addressing this with our range of recombinant monoclonal antibodies and knockout edited cell lines for gold-standard validation. Please check that this product meets your needs before purchasing.</p> <p>If you have any questions, special requirements or concerns, please send us an inquiry and/or contact our Support team ahead of purchase. Recommended alternatives for this product can be found below, along with publications, customer reviews and Q&As</p> |

Properties

| | |
|-----------------------------|---|
| Form | Liquid |
| Storage instructions | Shipped at 4°C. Store at +4°C short term (1-2 weeks). Upon delivery aliquot. Store at -20°C long term. Avoid freeze / thaw cycle. |
| Storage buffer | pH: 7.40 Preservative: 0.011% Proclin 300 Constituents: 55.77% Glycerol (glycerin, glycerine), 44.219% PBS |
| Purity | Immunogen affinity purified |
| Purification notes | ab231002 was purified by antigen-specific affinity chromatography followed by Protein A affinity chromatography. |
| Clonality | Polyclonal |

Isotype IgG

Applications

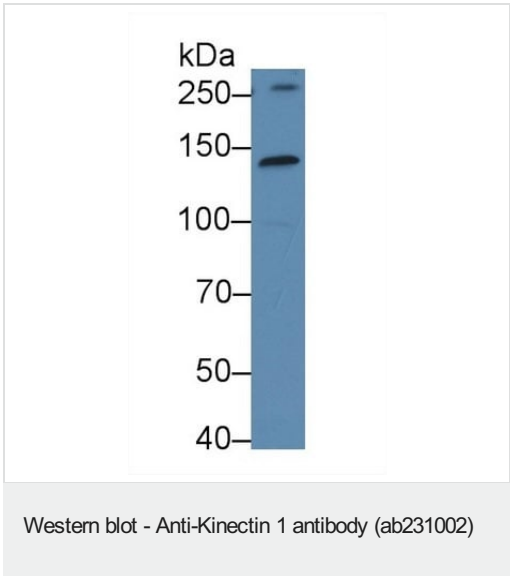
The **Abpromise guarantee** Our **Abpromise guarantee** covers the use of ab231002 in the following tested applications. The application notes include recommended starting dilutions; optimal dilutions/concentrations should be determined by the end user.

| Application | Abreviews | Notes |
|-------------|-----------|--|
| WB | | Use a concentration of 0.2 - 2 µg/ml. Predicted molecular weight: 152 kDa. |
| IHC-P | | Use a concentration of 5 - 20 µg/ml. |

Target

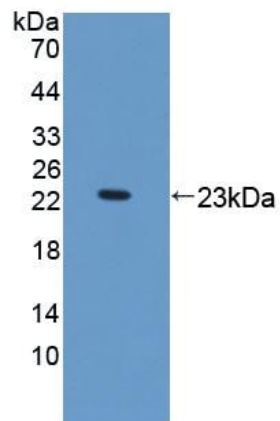
| | |
|-----------------------|---|
| Function | Receptor for kinesin thus involved in kinesin-driven vesicle motility. Accumulates in integrin-based adhesion complexes (IAC) upon integrin aggregation by fibronectin. |
| Tissue specificity | High levels in peripheral blood lymphocytes, testis and ovary, lower levels in spleen, thymus, prostate, small intestine and colon. |
| Sequence similarities | Belongs to the kinectin family. |
| Cellular localization | Endoplasmic reticulum membrane. Vesicle membrane protein anchored to the endoplasmic reticulum. |

Images



Anti-Kinectin 1 antibody (ab231002) at 1/250 dilution + HeLa (human epithelial cell line from cervix adenocarcinoma) cell lysate

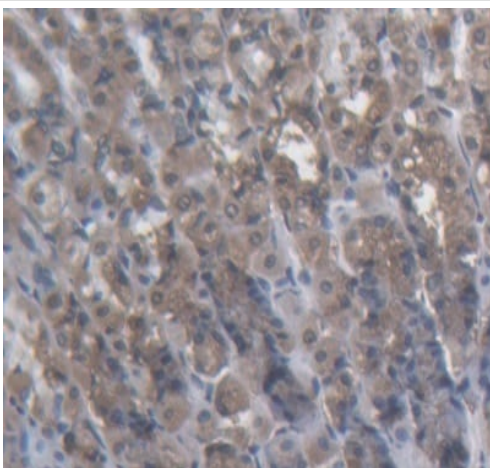
Predicted band size: 152 kDa



Western blot - Anti-Kinectin 1 antibody (ab231002)

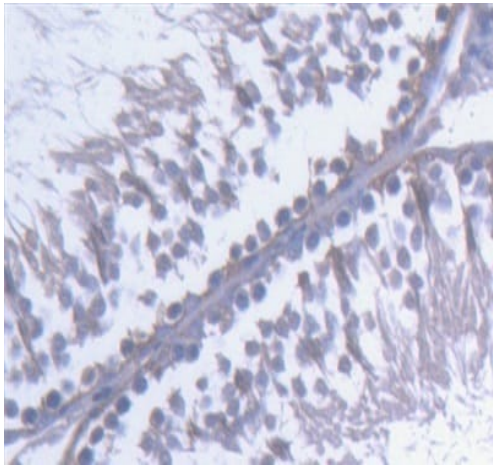
Anti-Kinectin 1 antibody (ab231002) at 1/250 dilution +
Recombinant rat Kinectin 1 protein

Predicted band size: 152 kDa



Immunohistochemistry (Formalin/PFA-fixed paraffin-
embedded sections) - Anti-Kinectin 1 antibody
(ab231002)

Formalin-fixed, paraffin-embedded rat stomach tissue stained for
Kinectin 1 using ab231002 at 20 µg/ml in immunohistochemical
analysis.



Formalin-fixed, paraffin-embedded rat testis tissue stained for kinectin 1 using ab231002 at 20 µg/ml in immunohistochemical analysis.

Immunohistochemistry (Formalin/PFA-fixed paraffin-embedded sections) - Anti-Kinectin 1 antibody (ab231002)

Please note: All products are "FOR RESEARCH USE ONLY. NOT FOR USE IN DIAGNOSTIC PROCEDURES"

Our Abpromise to you: Quality guaranteed and expert technical support

- Replacement or refund for products not performing as stated on the datasheet
- Valid for 12 months from date of delivery
- Response to your inquiry within 24 hours
- We provide support in Chinese, English, French, German, Japanese and Spanish
- Extensive multi-media technical resources to help you
- We investigate all quality concerns to ensure our products perform to the highest standards

If the product does not perform as described on this datasheet, we will offer a refund or replacement. For full details of the Abpromise, please visit <https://www.abcam.com/abpromise> or contact our technical team.

Terms and conditions

- Guarantee only valid for products bought direct from Abcam or one of our authorized distributors