

Product datasheet

Anti-Kininogen 1 antibody [EPR6097] ab124737

Recombinant RabMAb

[3 References](#) [6 Images](#)

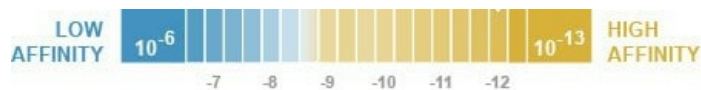
Overview

Product name	Anti-Kininogen 1 antibody [EPR6097]
Description	Rabbit monoclonal [EPR6097] to Kininogen 1
Host species	Rabbit
Specificity	This antibody detects three isoforms of Kininogen 1: full length (120 kDa), light chain (56 kDa), and cleavage form (45 kDa).
Tested applications	Suitable for: ELISA, WB, IP, IHC-P Unsuitable for: Flow Cyt
Species reactivity	Reacts with: Human, Recombinant fragment
Immunogen	Synthetic peptide within Human Kininogen 1 aa 600 to the C-terminus. The exact sequence is proprietary.
Positive control	Human plasma, platelet and ovarian cancer lysates; Human kidney tissue, Human ovarian adenocarcinoma tissue.
General notes	<p>This product is a recombinant monoclonal antibody, which offers several advantages including:</p> <ul style="list-style-type: none"> - High batch-to-batch consistency and reproducibility - Improved sensitivity and specificity - Long-term security of supply - Animal-free production <p>For more information see here.</p> <p>Our RabMAb[®] technology is a patented hybridoma-based technology for making rabbit monoclonal antibodies. For details on our patents, please refer to RabMAb[®] patents.</p> <p>Mouse, Rat: We have preliminary internal testing data to indicate this antibody may not react with these species. Please contact us for more information.</p>

Properties

Form	Liquid
Storage instructions	Shipped at 4°C. Store at -20°C. Stable for 12 months at -20°C.
Dissociation constant (K_D)	K _D = 2.70 x 10 ⁻¹² M





[Learn more about K_D](#)

Storage buffer	pH: 7.20 Preservative: 0.01% Sodium azide Constituents: 59% PBS, 40% Glycerol (glycerin, glycerine), 0.5% BSA
Purity	Protein A purified
Clonality	Monoclonal
Clone number	EPR6097
Isotype	IgG

Applications

The Abpromise guarantee Our **Abpromise guarantee** covers the use of ab124737 in the following tested applications. The application notes include recommended starting dilutions; optimal dilutions/concentrations should be determined by the end user.

Application	Abreviews	Notes
ELISA		Use at an assay dependent concentration.
WB		1/10000 - 1/50000. Detects a band of approximately 45, 56, 120 kDa (predicted molecular weight: 48, 72 kDa).
IP		1/10 - 1/100.
IHC-P		1/100 - 1/250. Perform heat mediated antigen retrieval before commencing with IHC staining protocol. Heat up to 98 degrees C, below boiling, and then let cool for 10-20 min

Application notes Is unsuitable for Flow Cyt.

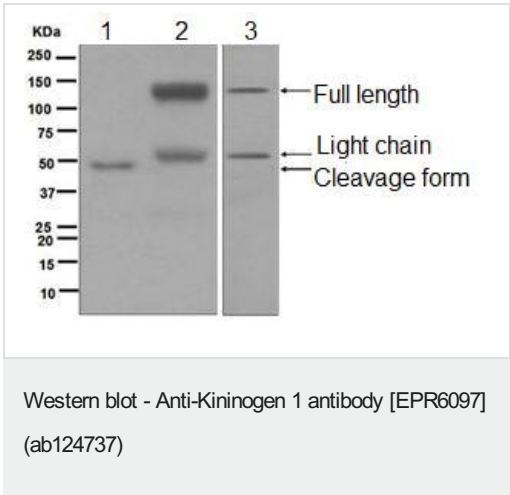
Target

Function (1) Kininogens are inhibitors of thiol proteases; (2) HMW-kininogen plays an important role in blood coagulation by helping to position optimally prekallikrein and factor XI next to factor XII; (3) HMW-kininogen inhibits the thrombin- and plasmin-induced aggregation of thrombocytes; (4) the active peptide bradykinin that is released from HMW-kininogen shows a variety of physiological effects: (4A) influence in smooth muscle contraction, (4B) induction of hypotension, (4C) natriuresis and diuresis, (4D) decrease in blood glucose level, (4E) it is a mediator of inflammation and causes (4E1) increase in vascular permeability, (4E2) stimulation of nociceptors (4E3) release of other mediators of inflammation (e.g. prostaglandins), (4F) it has a cardioprotective effect (directly via bradykinin action, indirectly via endothelium-derived relaxing factor action); (5) LMW-kininogen inhibits the aggregation of thrombocytes; (6) LMW-kininogen is in contrast to HMW-kininogen not involved in blood clotting.

Tissue specificity Secreted in plasma. T-kinin is detected in malignant ovarian, colon and breast carcinomas, but not in benign tumors.

Involvement in disease	Defects in KNG1 are the cause of high molecular weight kininogen deficiency (HMWK deficiency) [MIM:228960]. HMWK deficiency is an autosomal recessive coagulation defect. Patients with HMWK deficiency do not have a hemorrhagic tendency, but they exhibit abnormal surface-mediated activation of fibrinolysis.
Sequence similarities	Contains 3 cystatin domains.
Post-translational modifications	Bradykinin is released from kininogen by plasma kallikrein. Hydroxylation of Pro-383 occurs prior to the release of bradykinin. Phosphorylation sites are present in the extracellular medium. N- and O-glycosylated. O-glycosylated with core 1 or possibly core 8 glycans.
Cellular localization	Secreted > extracellular space.

Images



All lanes : Anti-Kininogen 1 antibody [EPR6097] (ab124737) at 1/10000 dilution

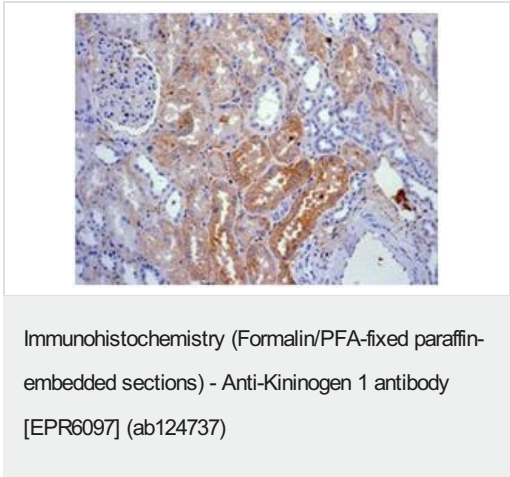
- Lane 1** : Human plasma
- Lane 2** : Human platelet tissue lysate
- Lane 3** : Human ovarian cancer tissue lysate

Lysates/proteins at 10 µg per lane.

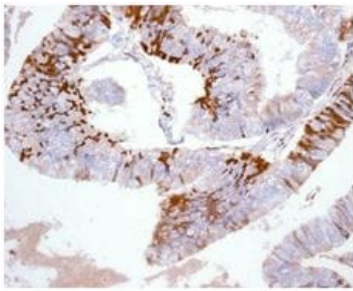
Secondary
All lanes : Goat anti-rabbit HRP conjugated at 1/2000 dilution

Predicted band size: 48, 72 kDa

ab124737 is detecting three isoforms of Kininogen 1: full length (120 kDa), light chain (56 kDa), and cleavage form (45 kDa).



ab124737 at 1/100 dilution staining Kininogen 1 in paraffin-embedded Human kidney tissues by Immunohistochemistry.
Perform heat mediated antigen retrieval before commencing with IHC staining protocol.

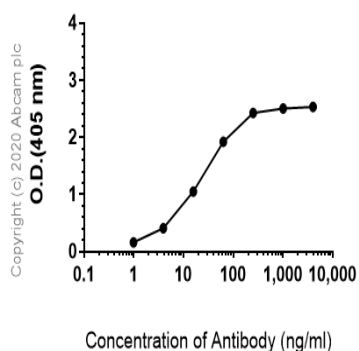


Immunohistochemistry (Formalin/PFA-fixed paraffin-embedded sections) - Anti-Kininogen 1 antibody [EPR6097] (ab124737)

ab124737 at 1/100 dilution staining Kininogen 1 in paraffin-embedded Human ovarian adenocarcinoma tissue by Immunohistochemistry.

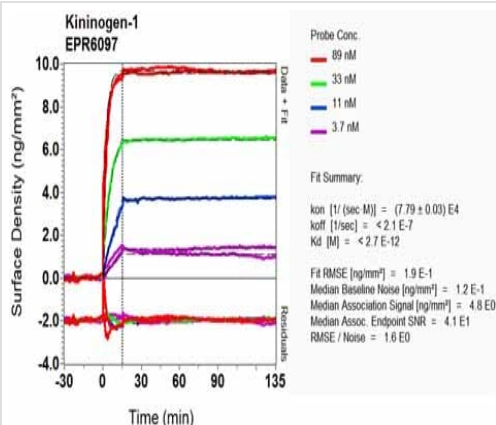
Perform heat mediated antigen retrieval before commencing with IHC staining protocol.

Indirect ELISA antibody dose-response curve antigen at 1000 ng/ml



ELISA - Anti-Kininogen 1 antibody [EPR6097] (ab124737)

ELISA analysis of Human Kininogen-1 recombinant protein at 1000 ng/mL with ab124737. An Alkaline Phosphatase-conjugated AffiniPure Goat Anti-Rabbit IgG (H+L) at 1/2500 dilution was used as the secondary antibody.



Ox-LD Scanning - Anti-Kininogen 1 antibody [EPR6097] (ab124737)

Equilibrium dissociation constant (K_D)

Learn more about K_D

[Click here to learn more about \$K_D\$](#)

Why choose a recombinant antibody?



Research with confidence
Consistent and reproducible results



Long-term and scalable supply
Recombinant technology



Success from the first experiment
Confirmed specificity



Ethical standards compliant
Animal-free production

Anti-Kininogen 1 antibody [EPR6097] (ab124737)

Please note: All products are "FOR RESEARCH USE ONLY. NOT FOR USE IN DIAGNOSTIC PROCEDURES"

Our Abpromise to you: Quality guaranteed and expert technical support

- Replacement or refund for products not performing as stated on the datasheet
- Valid for 12 months from date of delivery
- Response to your inquiry within 24 hours
- We provide support in Chinese, English, French, German, Japanese and Spanish
- Extensive multi-media technical resources to help you
- We investigate all quality concerns to ensure our products perform to the highest standards

If the product does not perform as described on this datasheet, we will offer a refund or replacement. For full details of the Abpromise, please visit <https://www.abcam.com/abpromise> or contact our technical team.

Terms and conditions

- Guarantee only valid for products bought direct from Abcam or one of our authorized distributors