

## Product datasheet

# Anti-KIR2DL1 + KIR2DL2 antibody [EPR22492-92] ab252936

Recombinant RabMAb

[4 Images](#)

### Overview

---

<b>Product name</b>	Anti-KIR2DL1 + KIR2DL2 antibody [EPR22492-92]
<b>Description</b>	Rabbit monoclonal [EPR22492-92] to KIR2DL1 + KIR2DL2
<b>Host species</b>	Rabbit
<b>Tested applications</b>	<b>Suitable for:</b> WB, Flow Cyt, IHC-P
<b>Species reactivity</b>	<b>Reacts with:</b> Human
<b>Immunogen</b>	Recombinant fragment. This information is proprietary to Abcam and/or its suppliers.
<b>Positive control</b>	WB: His-tagged human KIR2DL1 recombinant protein (aa1-245; His and LIF-tagged human KIR2DL2 recombinant protein; Flow Cyt: Human PBMCs. IHC: human endometrium
<b>General notes</b>	<p>This product is a recombinant monoclonal antibody, which offers several advantages including:</p> <ul style="list-style-type: none"><li>- High batch-to-batch consistency and reproducibility</li><li>- Improved sensitivity and specificity</li><li>- Long-term security of supply</li><li>- Animal-free production</li></ul> <p>For more information <a href="#">see here</a>.</p> <p>Our RabMAb<sup>®</sup> technology is a patented hybridoma-based technology for making rabbit monoclonal antibodies. For details on our patents, please refer to <a href="#">RabMAb<sup>®</sup> patents</a>.</p>

### Properties

---

<b>Form</b>	Liquid
<b>Storage instructions</b>	Shipped at 4°C. Store at +4°C short term (1-2 weeks). Upon delivery aliquot. Store at -20°C long term. Avoid freeze / thaw cycle.
<b>Storage buffer</b>	pH: 7.2 Preservative: 0.01% Sodium azide Constituents: PBS, 40% Glycerol (glycerin, glycerine), 0.05% BSA
<b>Purity</b>	Protein A purified
<b>Clonality</b>	Monoclonal
<b>Clone number</b>	EPR22492-92

Isotype

IgG

## Applications

### The Abpromise guarantee

Our **Abpromise guarantee** covers the use of ab252936 in the following tested applications.

The application notes include recommended starting dilutions; optimal dilutions/concentrations should be determined by the end user.

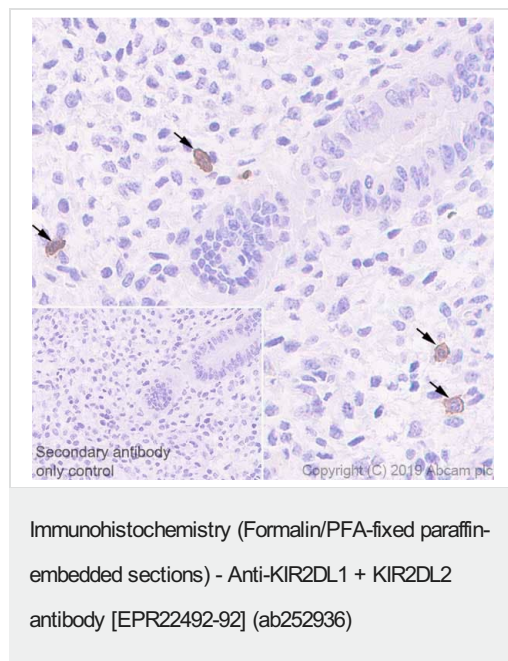
Application	Abreviews	Notes
WB		1/1000. Predicted molecular weight: 39 kDa.
Flow Cyt		1/50.
IHC-P		1/1000. Perform heat mediated antigen retrieval with Tris/EDTA buffer pH 9.0 before commencing with IHC staining protocol.

## Target

### Cellular localization

KIR2DL1: Cell membrane. KIR2DL2: Cell membrane.

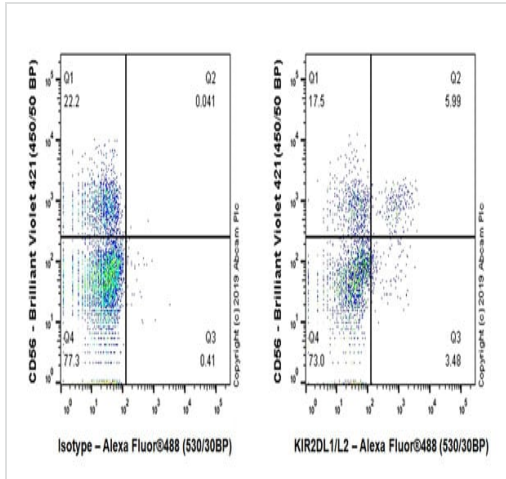
## Images



Immunohistochemical analysis of paraffin-embedded human endometrium tissue labeling KIR2DL1 + KIR2DL2 with a252936 at 1/1000 dilution, followed by Goat Anti-Rabbit IgG H&L (HRP) ready to use. Positive staining in natural killer (NK) cells in human endometrium (PMID: 7749980) is observed. Counterstained with hematoxylin.

Secondary antibody only control: Used PBS instead of primary antibody, secondary antibody is Goat Anti-Rabbit IgG H&L (HRP) ready to use.

Heat mediated antigen retrieval using **ab93684** (Tris/EDTA buffer, pH 9.0).



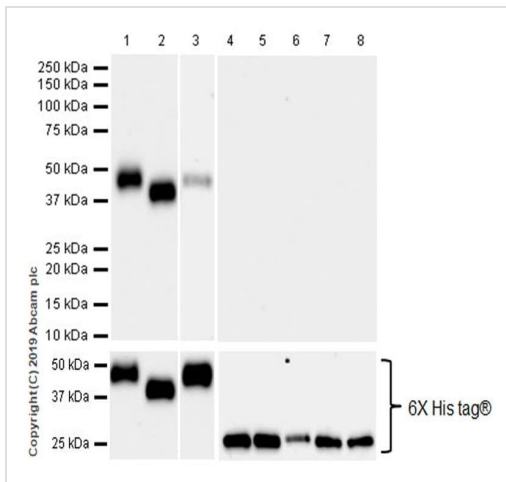
Flow Cytometry - Anti-KIR2DL1 + KIR2DL2 antibody [EPR22492-92] (ab252936)

Flow cytometric analysis of human PBMCs (peripheral blood mononuclear cells) labeling KIR2DL1 + KIR2DL2 with ab252936 at 1/50 dilution (Right) compared with Recombinant Rabbit IgG, monoclonal [EPR25A] - Isotype Control (**ab172730**) (Left).

Goat Anti-Rabbit IgG Fc (Alexa Fluor® 488) preadsorbed (**ab150097**), at 1/5000 dilution was used as the secondary antibody.

Cells were stained with rabbit IgG (Left) or ab252936 (Right). Then stained with anti-CD56 conjugated to BV421.

Gated on viable cells.



Western blot - Anti-KIR2DL1 + KIR2DL2 antibody [EPR22492-92] (ab252936)

**All lanes** : Anti-KIR2DL1 + KIR2DL2 antibody [EPR22492-92] (ab252936) at 1/1000 dilution

**Lane 1** : His-tagged human KIR2DL1 recombinant protein (aa1-245) 20 ng

**Lane 2** : His and LIF-tagged human KIR2DL2 recombinant protein (aa26-221) 20 ng

**Lane 3** : His-tagged human KIR2DL3 recombinant protein (aa1-245) 20 ng

**Lane 4** : His-tagged human KIR2DS1 recombinant protein (aa22-221) 20 ng

**Lane 5** : His-tagged human KIR2DS2 recombinant protein (aa22-221) 20 ng

**Lane 6** : His-tagged human KIR2DS3 recombinant protein (aa22-221) 20 ng

**Lane 7** : His-tagged human KIR2DS4 recombinant protein (aa22-221) 20 ng

**Lane 8** : His-tagged human KIR2DS5 recombinant protein (aa22-221) 20 ng

### Secondary


**All lanes** : Goat Anti-Rabbit IgG H&L (HRP) (**ab97051**) at 1/100000 dilution

**Predicted band size:** 39 kDa

**Exposure time:** 26 seconds

Blocking and dilution buffer: 5% NFDm/TBST.

Why choose a recombinant antibody?



- Research with confidence**  
Consistent and reproducible results
- Long-term and scalable supply**  
Recombinant technology
- Success from the first experiment**  
Confirmed specificity
- Ethical standards compliant**  
Animal-free production

Anti-KIR2DL1 + KIR2DL2 antibody [EPR22492-92]  
(ab252936)

**Please note:** All products are "FOR RESEARCH USE ONLY. NOT FOR USE IN DIAGNOSTIC PROCEDURES"

### Our Abpromise to you: Quality guaranteed and expert technical support

---

- Replacement or refund for products not performing as stated on the datasheet
- Valid for 12 months from date of delivery
- Response to your inquiry within 24 hours
- We provide support in Chinese, English, French, German, Japanese and Spanish
- Extensive multi-media technical resources to help you
- We investigate all quality concerns to ensure our products perform to the highest standards

If the product does not perform as described on this datasheet, we will offer a refund or replacement. For full details of the Abpromise, please visit <https://www.abcam.com/abpromise> or contact our technical team.

### Terms and conditions

---

- Guarantee only valid for products bought direct from Abcam or one of our authorized distributors