

Product datasheet

Anti-KIR2DL1 + KIR2DL3 + KIR2DL4 + KIR2DS4 antibody ab197927

[2 Images](#)

Overview

Product name	Anti-KIR2DL1 + KIR2DL3 + KIR2DL4 + KIR2DS4 antibody
Description	Rabbit polyclonal to KIR2DL1 + KIR2DL3 + KIR2DL4 + KIR2DS4
Host species	Rabbit
Tested applications	Suitable for: IHC-P
Species reactivity	Reacts with: Human
Immunogen	Fusion protein corresponding to Human KIR2DL1 + KIR2DL3 + KIR2DL4 + KIR2DS4 (internal sequence). (BC032422/ ADQ31987/ NP_002246/ NP_036446). The identity of protein fusion partner is GST.
Positive control	Human colon cancer and thyroid cancer tissues.
General notes	<p>The Life Science industry has been in the grips of a reproducibility crisis for a number of years. Abcam is leading the way in addressing this with our range of recombinant monoclonal antibodies and knockout edited cell lines for gold-standard validation. Please check that this product meets your needs before purchasing.</p> <p>If you have any questions, special requirements or concerns, please send us an inquiry and/or contact our Support team ahead of purchase. Recommended alternatives for this product can be found below, along with publications, customer reviews and Q&As</p>

Properties

Form	Liquid
Storage instructions	Shipped at 4°C. Store at +4°C short term (1-2 weeks). Upon delivery aliquot. Store at -20°C long term. Avoid freeze / thaw cycle.
Storage buffer	pH: 7.4 Preservative: 0.05% Sodium azide Constituents: 50% Glycerol (glycerin, glycerine), 49% PBS
Purity	Immunogen affinity purified
Clonality	Polyclonal
Isotype	IgG

Applications

The Abpromise guarantee Our **Abpromise guarantee** covers the use of ab197927 in the following tested applications. The application notes include recommended starting dilutions; optimal dilutions/concentrations should be determined by the end user.

Application	Abreviews	Notes
IHC-P		1/30 - 1/100.

Target

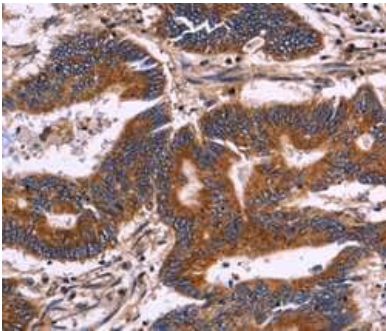
Relevance

KIRs are human natural killer (NK) cell receptors for MHC class I molecules. Most inhibit the activity of NK cells thus preventing cell lysis. Two main families of receptors for HLA class I have been discovered on human NK cells: Killer cell Immunoglobulin-like receptors (KIR) and CD94/NG2 heterodimers. The KIR receptors are an extremely diverse family of receptors. In addition to receptors for HLA, NK cells also express pattern recognition receptors e.g. TLRs and Nod proteins.

Cellular localization

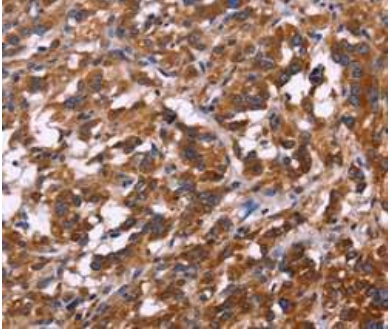
Cell Membrane

Images



Immunohistochemical analysis of paraffin-embedded Human colon cancer tissue labeling KIR2DL3 with ab197927 at 1/30 dilution.

Immunohistochemistry (Formalin/PFA-fixed paraffin-embedded sections) - Anti-KIR2DL1 + KIR2DL3 + KIR2DL4 + KIR2DS4 antibody (ab197927)



Immunohistochemical analysis of paraffin-embedded Human thyroid cancer tissue labeling KIR2DL3 with ab197927 at 1/30 dilution.

Immunohistochemistry (Formalin/PFA-fixed paraffin-embedded sections) - Anti-KIR2DL1 + KIR2DL3 + KIR2DL4 + KIR2DS4 antibody (ab197927)

Please note: All products are "FOR RESEARCH USE ONLY. NOT FOR USE IN DIAGNOSTIC PROCEDURES"

Our Abpromise to you: Quality guaranteed and expert technical support

- Replacement or refund for products not performing as stated on the datasheet
- Valid for 12 months from date of delivery
- Response to your inquiry within 24 hours
- We provide support in Chinese, English, French, German, Japanese and Spanish
- Extensive multi-media technical resources to help you
- We investigate all quality concerns to ensure our products perform to the highest standards

If the product does not perform as described on this datasheet, we will offer a refund or replacement. For full details of the Abpromise, please visit <https://www.abcam.com/abpromise> or contact our technical team.

Terms and conditions

- Guarantee only valid for products bought direct from Abcam or one of our authorized distributors