




Product datasheet

Anti-KIST/KIS antibody ab237501

[2 Images](#)

Overview

Product name	Anti-KIST/KIS antibody
Description	Rabbit polyclonal to KIST/KIS
Host species	Rabbit
Tested applications	Suitable for: ICC/IF, IHC-P
Species reactivity	Reacts with: Human Predicted to work with: Mouse, Rat, Orangutan 
Immunogen	Recombinant fragment corresponding to Human KIST/KIS aa 150-400. Database link: Q8TAS1  Run BLAST with  Run BLAST with
Positive control	IHC-P: Human prostate tissue. ICC/IF: PC-3 cells.
General notes	<p>The Life Science industry has been in the grips of a reproducibility crisis for a number of years. Abcam is leading the way in addressing this with our range of recombinant monoclonal antibodies and knockout edited cell lines for gold-standard validation. Please check that this product meets your needs before purchasing.</p> <p>If you have any questions, special requirements or concerns, please send us an inquiry and/or contact our Support team ahead of purchase. Recommended alternatives for this product can be found below, along with publications, customer reviews and Q&As</p>

Properties

Form	Liquid
Storage instructions	Shipped at 4°C. Store at +4°C short term (1-2 weeks). Upon delivery aliquot. Store at -20°C long term. Avoid freeze / thaw cycle.
Storage buffer	pH: 7.40 Preservative: 0.03% Proclin 300 Constituents: 50% Glycerol (glycerin, glycerine), PBS
Purity	Protein G purified
Purification notes	Purity greater than 95%.
Clonality	Polyclonal
Isotype	IgG

Applications

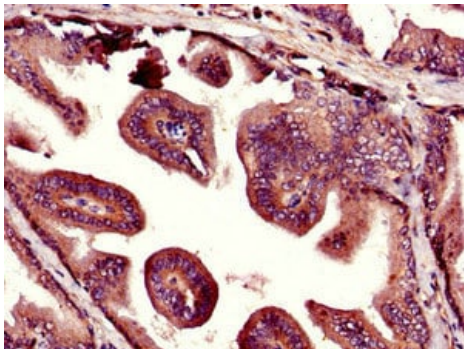
The Abpromise guarantee Our **Abpromise guarantee** covers the use of ab237501 in the following tested applications. The application notes include recommended starting dilutions; optimal dilutions/concentrations should be determined by the end user.

Application	Abreviews	Notes
ICC/IF		1/50 - 1/200.
IHC-P		1/20 - 1/200.

Target

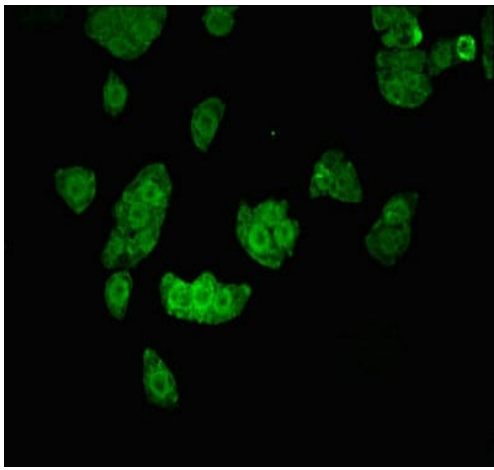
Function	Upon serum stimulation, phosphorylates CDKN1B/p27Kip1, thus controlling CDKN1B subcellular location and cell cycle progression in G1 phase. May be involved in trafficking and/or processing of RNA.
Tissue specificity	Widely expressed, with highest levels in skeletal muscle, kidney, placenta and peripheral blood leukocytes.
Sequence similarities	Belongs to the protein kinase superfamily. Ser/Thr protein kinase family. Contains 1 protein kinase domain. Contains 1 RRM (RNA recognition motif) domain.
Cellular localization	Nucleus. Mostly nuclear.

Images



Paraffin-embedded human prostate tissue stained for KIST/KIS using ab237501 at 1/100 dilution in immunohistochemical analysis.

Immunohistochemistry (Formalin/PFA-fixed paraffin-embedded sections) - Anti-KIST/KIS antibody (ab237501)



Immunocytochemistry/ Immunofluorescence - Anti-KIST/KIS antibody (ab237501)

PC-3 (human prostate adenocarcinoma cell line) cells stained for KIST/KIS (green) using ab237501 at 1/100 dilution in ICC/IF, followed by Alexa Fluor 488[®] conjugated Goat Anti-Rabbit IgG (H+L).

Please note: All products are "FOR RESEARCH USE ONLY. NOT FOR USE IN DIAGNOSTIC PROCEDURES"

Our Abpromise to you: Quality guaranteed and expert technical support

- Replacement or refund for products not performing as stated on the datasheet
- Valid for 12 months from date of delivery
- Response to your inquiry within 24 hours
- We provide support in Chinese, English, French, German, Japanese and Spanish
- Extensive multi-media technical resources to help you
- We investigate all quality concerns to ensure our products perform to the highest standards

If the product does not perform as described on this datasheet, we will offer a refund or replacement. For full details of the Abpromise, please visit <https://www.abcam.com/abpromise> or contact our technical team.

Terms and conditions

- Guarantee only valid for products bought direct from Abcam or one of our authorized distributors