


Product datasheet

Anti-KLF4 antibody ab129473

★★★★☆ [4 Abreviews](#) [31 References](#) [3 Images](#)

Overview

Product name	Anti-KLF4 antibody
Description	Rabbit polyclonal to KLF4
Host species	Rabbit
Specificity	Replenishment batches of our polyclonal antibody, ab129473 are tested in WB. Previous batches were additionally validated in ICC/IF. This application is still expected to work and is covered by our Abpromise guarantee. You may also be interested in our alternative recombinant antibody, ab214666 .
Tested applications	Suitable for: ICC/IF, WB
Species reactivity	Reacts with: Mouse, Human Predicted to work with: Rat, Chinese hamster 
Immunogen	Synthetic peptide corresponding to Mouse KLF4 aa 1-100 conjugated to Keyhole Limpet Haemocyanin (KLH). Database link: Q60793
Positive control	WB: Mouse ES-E14TG2a whole cell lysate, Mouse embryonic stem cell lysate, F9 whole cell lysate, LoVo whole cell lysate, HEK-293 whole cell lysate, HT29 whole cell lysate ICC/IF: mES cells.
General notes	<p>The Life Science industry has been in the grips of a reproducibility crisis for a number of years. Abcam is leading the way in addressing this with our range of recombinant monoclonal antibodies and knockout edited cell lines for gold-standard validation. Please check that this product meets your needs before purchasing.</p> <p>If you have any questions, special requirements or concerns, please send us an inquiry and/or contact our Support team ahead of purchase. Recommended alternatives for this product can be found below, along with publications, customer reviews and Q&As</p>

Properties

Form	Liquid
Storage instructions	Shipped at 4°C. Store at +4°C short term (1-2 weeks). Upon delivery aliquot. Store at -20°C or -80°C. Avoid freeze / thaw cycle.
Storage buffer	pH: 7.40 Preservative: 0.02% Sodium azide

Constituent: PBS

Batches of this product that have a concentration < 1mg/ml may have BSA added as a stabilising agent. If you would like information about the formulation of a specific lot, please contact our scientific support team who will be happy to help.

Purity Immunogen affinity purified
Clonality Polyclonal
Isotype IgG

Applications

The Abpromise guarantee Our **Abpromise guarantee** covers the use of ab129473 in the following tested applications. The application notes include recommended starting dilutions; optimal dilutions/concentrations should be determined by the end user.

Application	Abreviews	Notes
ICC/IF	★★★★☆ (2)	Use a concentration of 1 µg/ml.
WB	★★★★★ (2)	Use a concentration of 1 µg/ml. Detects a band of approximately 60 kDa (predicted molecular weight: 54 kDa).

Target

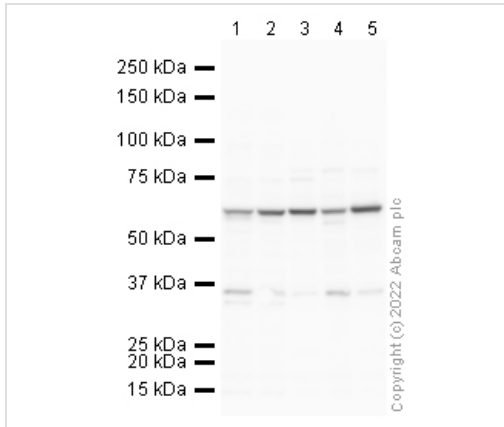
Function Transcription factor; can act both as activator and as repressor. Binds the 5'-CACCC-3' core sequence. Binds to the promoter region of its own gene and can activate its own transcription. Regulates the expression of key transcription factors during embryonic development. Plays an important role in maintaining embryonic stem cells, and in preventing their differentiation. Required for establishing the barrier function of the skin and for postnatal maturation and maintenance of the ocular surface. Involved in the differentiation of epithelial cells and may also function in skeletal and kidney development. Contributes to the down-regulation of p53/TP53 transcription.

Sequence similarities Belongs to the krueppel C2H2-type zinc-finger protein family. Contains 3 C2H2-type zinc fingers.

Domain the 9aaTAD motif is a transactivation domain present in a large number of yeast and animal transcription factors.

Cellular localization Nucleus.

Images



Western blot - Anti-KLF4 antibody (ab129473)

All lanes : Anti-KLF4 antibody (ab129473) at 1 µg/ml

Lane 1 : Mouse embryonic stem cell lysate

Lane 2 : F9 whole cell lysate

Lane 3 : LoVo whole cell lysate

Lane 4 : HEK-293 whole cell lysate

Lane 5 : HT29 whole cell lysate

Lysates/proteins at 20 µg per lane.

Secondary

All lanes : Goat polyclonal to Rabbit IgG - H&L - Pre-Adsorbed (HRP) at 1/50000 dilution

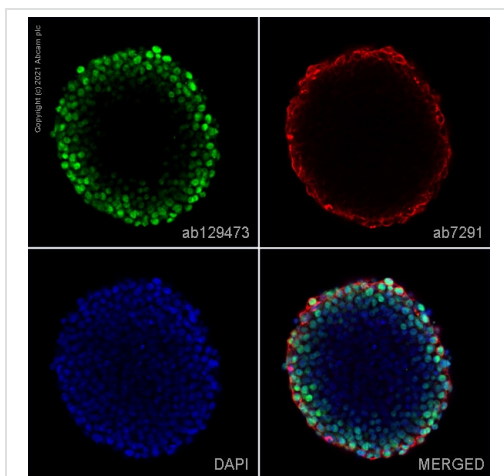
Predicted band size: 54 kDa

Observed band size: 60 kDa

Exposure time: 1 minute

Gel type: MOPS

Blocking buffer: 2% BSA block



Immunocytochemistry/ Immunofluorescence - Anti-KLF4 antibody (ab129473)

ab129473 staining KLF4 in mES cells. The cells were fixed with 4% paraformaldehyde (10 min), permeabilized with 0.1% PBS-Tween for 5 minutes and then blocked with 1% BSA/10% normal goat serum/0.3M glycine in 0.1% PBS-Tween for 1h. The cells were then incubated overnight at 4°C with ab129473 at 1µg/ml and **ab7291**, Mouse monoclonal [DM1A] to alpha Tubulin - Loading Control. Cells were then incubated with **ab150081**, Goat polyclonal Secondary Antibody to Rabbit IgG - H&L (Alexa Fluor® 488), pre-adsorbed at 1/1000 dilution (shown in green) and **ab150120**, Goat polyclonal Secondary Antibody to Mouse IgG - H&L (Alexa Fluor® 594), pre-adsorbed at 1/1000 dilution (shown in pseudocolour red). Nuclear DNA was labelled with DAPI (shown in blue).

Image was acquired with a confocal microscope (Leica-

Microsystems TCS SP8) and a single confocal section is shown.

Anti-KLF4 antibody (ab129473) at 1 µg/ml + E14Tg2a (Mouse embryonic stem cell line) Whole Cell Lysate at 10 µg

Secondary

Goat Anti-Rabbit IgG H&L (HRP) ([ab97051](#)) at 1/10000 dilution

Developed using the ECL technique.

Performed under reducing conditions.

Predicted band size: 54 kDa

Observed band size: 60 kDa

Exposure time: 8 minutes

This blot was produced using a 4-12% Bis-tris gel under the MOPS buffer system. The gel was run at 200V for 50 minutes before being transferred onto a Nitrocellulose membrane at 30V for 70 minutes. The membrane was then blocked for an hour using 5% Bovine Serum Albumin before being incubated with ab129473 overnight at 4°C. Antibody binding was detected using an anti-rabbit antibody conjugated to HRP, and visualised using ECL development solution.

Please note: All products are "FOR RESEARCH USE ONLY. NOT FOR USE IN DIAGNOSTIC PROCEDURES"

Our Abpromise to you: Quality guaranteed and expert technical support

- Replacement or refund for products not performing as stated on the datasheet
- Valid for 12 months from date of delivery
- Response to your inquiry within 24 hours
- We provide support in Chinese, English, French, German, Japanese and Spanish
- Extensive multi-media technical resources to help you
- We investigate all quality concerns to ensure our products perform to the highest standards

If the product does not perform as described on this datasheet, we will offer a refund or replacement. For full details of the Abpromise, please visit <https://www.abcam.com/abpromise> or contact our technical team.

Terms and conditions

- Guarantee only valid for products bought direct from Abcam or one of our authorized distributors