

Product datasheet

Anti-KLF4 antibody ab272860

[2 References](#) [9 Images](#)

Overview

Product name	Anti-KLF4 antibody
Description	Rabbit polyclonal to KLF4
Host species	Rabbit
Tested applications	Suitable for: Flow Cyt, WB, IP
Species reactivity	Reacts with: Mouse, Rat, Human
Immunogen	Recombinant fragment within Human KLF4 (C terminal). The exact sequence is proprietary. Database link: O43474
Positive control	Flow Cyt: Human embryonic stem cells (ESC). WB: HEK-293T, A431, HeLa, HepG2, HCT 116, Rat2, NIH/3T3 whole cell lysate and mouse and human ESC. IP: HeLa whole cell extracts.
General notes	<p>The Life Science industry has been in the grips of a reproducibility crisis for a number of years. Abcam is leading the way in addressing this with our range of recombinant monoclonal antibodies and knockout edited cell lines for gold-standard validation. Please check that this product meets your needs before purchasing.</p> <p>If you have any questions, special requirements or concerns, please send us an inquiry and/or contact our Support team ahead of purchase. Recommended alternatives for this product can be found below, along with publications, customer reviews and Q&As</p>

Properties

Form	Liquid
Storage instructions	Shipped at 4°C. Store at +4°C short term (1-2 weeks). Upon delivery aliquot. Store at -20°C long term. Avoid freeze / thaw cycle.
Storage buffer	pH: 7.00 Preservative: 0.025% Proclin 300 Constituents: 78% PBS, 1% BSA, 20% Glycerol (glycerin, glycerine)
Purity	Immunogen affinity purified
Clonality	Polyclonal
Isotype	IgG

Applications

The Abpromise guarantee

Our **Abpromise guarantee** covers the use of ab272860 in the following tested applications.

The application notes include recommended starting dilutions; optimal dilutions/concentrations should be determined by the end user.

Application	Abreviews	Notes
Flow Cyt		1/50 - 1/200.
WB		1/500 - 1/3000.
IP		1/100 - 1/500.

Target

Function

Transcription factor; can act both as activator and as repressor. Binds the 5'-CACCC-3' core sequence. Binds to the promoter region of its own gene and can activate its own transcription. Regulates the expression of key transcription factors during embryonic development. Plays an important role in maintaining embryonic stem cells, and in preventing their differentiation. Required for establishing the barrier function of the skin and for postnatal maturation and maintenance of the ocular surface. Involved in the differentiation of epithelial cells and may also function in skeletal and kidney development. Contributes to the down-regulation of p53/TP53 transcription.

Sequence similarities

Belongs to the krueppel C2H2-type zinc-finger protein family.
Contains 3 C2H2-type zinc fingers.

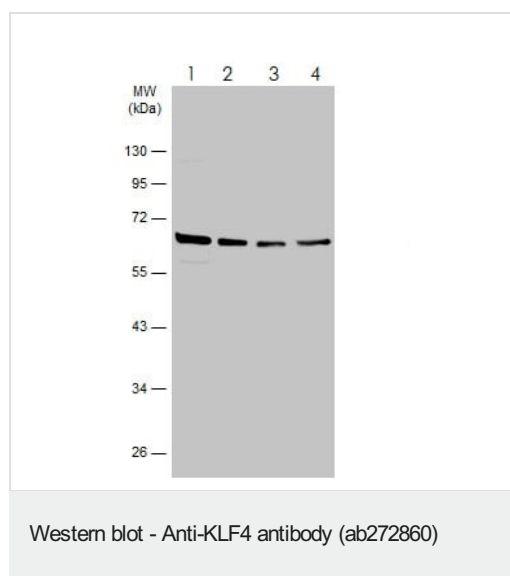
Domain

the 9aaTAD motif is a transactivation domain present in a large number of yeast and animal transcription factors.

Cellular localization

Nucleus.

Images



All lanes : Anti-KLF4 antibody (ab272860) at 1/5000 dilution

Lane 1 : HEK-293T (human epithelial cell line from embryonic kidney transformed with large T antigen) whole cell lysate

Lane 2 : A431 (human epidermoid carcinoma cell line) whole cell lysate

Lane 3 : HeLa (human epithelial cell line from cervix adenocarcinoma) whole cell lysate

Lane 4 : HepG2 (human liver hepatocellular carcinoma cell line) whole cell lysate

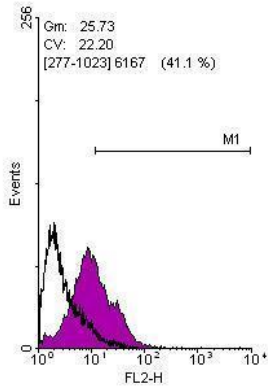
Lysates/proteins at 30 µg per lane.

Secondary

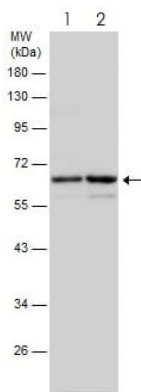
All lanes : HRP-conjugated anti-rabbit IgG antibody

10% SDS-PAGE

Flow cytometry analysis of human embryonic stem cells labeling KLF4 using ab272860 at 1:100 dilution (purple) or rabbit IgG (black).



Flow Cytometry - Anti-KLF4 antibody (ab272860)



Western blot - Anti-KLF4 antibody (ab272860)

All lanes : Anti-KLF4 antibody (ab272860) at 1/2000 dilution

Lane 1 : HCT 116 (human colorectal carcinoma cell line) whole cell lysate

Lane 2 : HCT 116 nuclear extract

Lysates/proteins at 30 µg per lane.

Secondary

All lanes : HRP-conjugated anti-rabbit IgG antibody

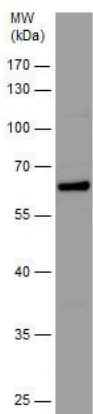
10% SDS-PAGE

Anti-Synaptojanin antibody (**ab272560**) at 1/5000 dilution + Rat2 (rat fibroblast cell line) whole cell lysate

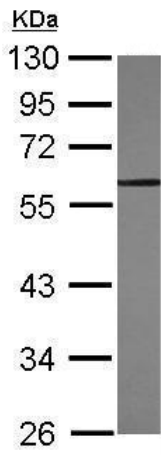
Secondary

HRP-conjugated anti-rabbit IgG antibody

10% SDS-PAGE



Western blot - Anti-KLF4 antibody (ab272860)



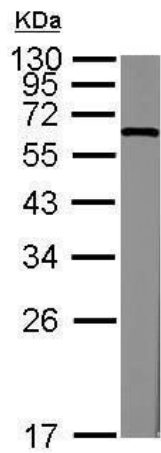
Western blot - Anti-KLF4 antibody (ab272860)

Anti-KLF4 antibody (ab272860) at 1/5000 dilution + NIH/3T3 (mouse embryo fibroblast cell line) whole cell lysate at 30 µg

Secondary

HRP-conjugated anti-rabbit IgG antibody

10% SDS-PAGE



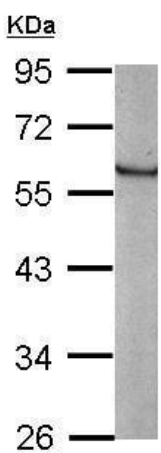
Western blot - Anti-KLF4 antibody (ab272860)

Anti-KLF4 antibody (ab272860) at 1/3000 dilution + Mouse embryonic stem cells at 20 µg

Secondary

HRP-conjugated anti-rabbit IgG antibody

12% SDS-PAGE



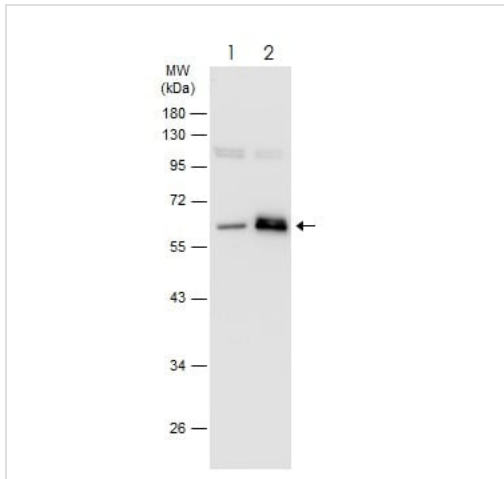
Western blot - Anti-KLF4 antibody (ab272860)

Anti-KLF4 antibody (ab272860) at 1/3000 dilution + Human embryonic stem cells at 20 µg

Secondary

HRP-conjugated anti-rabbit IgG antibody

10% SDS-PAGE



Western blot - Anti-KLF4 antibody (ab272860)

All lanes : Anti-KLF4 antibody (ab272860) at 1/1000 dilution

Lane 1 : Non-transfected HEK-293 (human epithelial cell line from embryonic kidney) whole cell lysate

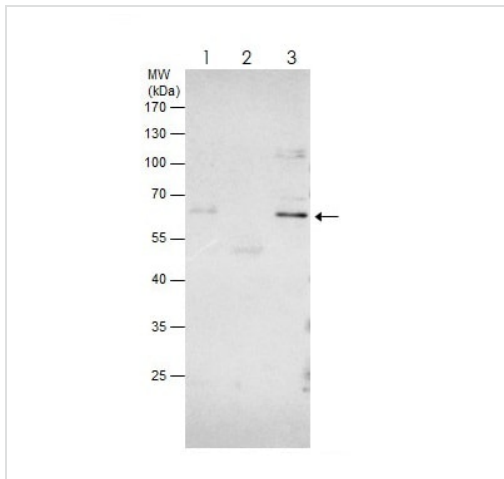
Lane 2 : Transfected HEK-293 whole cell lysate

Lysates/proteins at 30 µg per lane.

Secondary

All lanes : HRP-conjugated anti-rabbit IgG antibody

10% SDS-PAGE



Immunoprecipitation - Anti-KLF4 antibody (ab272860)

10% SDS-PAGE.

Immunoprecipitation of KLF4 protein from HeLa whole cell extracts using 5 µg of ab272860.

All lanes : Anti-KLF4 antibody (ab272860) at 1/500 dilution

Lane 1 : HeLa (human epithelial cell line from cervix adenocarcinoma) whole cell lysate

Lane 2 : Control IgG

Lane 3 : Immunoprecipitation of KLF4 protein from HeLa whole cell extracts using 5 µg of ab272860

Secondary

All lanes : anti Rabbit IgG (HRP)

Please note: All products are "FOR RESEARCH USE ONLY. NOT FOR USE IN DIAGNOSTIC PROCEDURES"

Our Abpromise to you: Quality guaranteed and expert technical support

- Replacement or refund for products not performing as stated on the datasheet
- Valid for 12 months from date of delivery
- Response to your inquiry within 24 hours
- We provide support in Chinese, English, French, German, Japanese and Spanish
- Extensive multi-media technical resources to help you
- We investigate all quality concerns to ensure our products perform to the highest standards

If the product does not perform as described on this datasheet, we will offer a refund or replacement. For full details of the Abpromise, please visit <https://www.abcam.com/abpromise> or contact our technical team.

Terms and conditions

- Guarantee only valid for products bought direct from Abcam or one of our authorized distributors