

Product datasheet

Anti-KLHL6 antibody [EPR13484] ab182163

Recombinant RabMAb

★★★★★ [2 Abreviews](#) [1 References](#) [6 Images](#)

Overview

Product name	Anti-KLHL6 antibody [EPR13484]
Description	Rabbit monoclonal [EPR13484] to KLHL6
Host species	Rabbit
Tested applications	Suitable for: WB, ICC/IF, IP
Species reactivity	Reacts with: Human
Immunogen	Recombinant fragment. This information is proprietary to Abcam and/or its suppliers.
Positive control	WB: 293T transfected with KLHL6 expression vector with a N-terminal DDDDK tag, Human tonsil, A549 and Human fetal kidney lysates. IP: A549 cell lysate. ICC/IF: A549 cells.
General notes	<p>This product is a recombinant monoclonal antibody, which offers several advantages including:</p> <ul style="list-style-type: none"> - High batch-to-batch consistency and reproducibility - Improved sensitivity and specificity - Long-term security of supply - Animal-free production <p>For more information see here.</p> <p>Our RabMAb[®] technology is a patented hybridoma-based technology for making rabbit monoclonal antibodies. For details on our patents, please refer to RabMAb[®] patents.</p>

Properties

Form	Liquid
Storage instructions	Shipped at 4°C. Store at +4°C short term (1-2 weeks). Upon delivery aliquot. Store at -20°C long term. Avoid freeze / thaw cycle.
Storage buffer	<p>pH: 7.2</p> <p>Preservative: 0.01% Sodium azide</p> <p>Constituents: 40% Glycerol (glycerin, glycerine), 59% PBS, 0.05% BSA</p>
Purity	Protein A purified
Clonality	Monoclonal
Clone number	EPR13484
Isotype	IgG

Applications

The Abpromise guarantee

Our **Abpromise guarantee** covers the use of ab182163 in the following tested applications.

The application notes include recommended starting dilutions; optimal dilutions/concentrations should be determined by the end user.

Application	Abreviews	Notes
WB	★★★★★ (2)	1/1000 - 1/2000. Detects a band of approximately 70 kDa (predicted molecular weight: 70 kDa).
ICC/IF		1/250.
IP		1/50.

Target

Function

Involved in B-lymphocyte antigen receptor signaling and germinal center formation.

Tissue specificity

Found in germinal center B-cells.

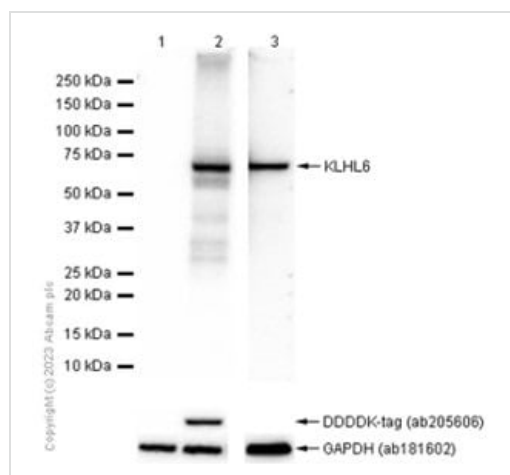
Sequence similarities

Contains 1 BACK (BTB/Kelch associated) domain.

Contains 1 BTB (POZ) domain.

Contains 6 Kelch repeats.

Images



Western blot - Anti-KLHL6 antibody [EPR13484]
(ab182163)

All lanes : Anti-KLHL6 antibody [EPR13484] (ab182163) at
1/1000 dilution

Lane 1 : 293T (Human embryonic kidney epithelial cell) transfected
with an empty vector (vector control) whole cell lysate

Lane 2 : 293T transfected with KLHL6 expression vector
containing a N-terminal DDDDK tag, whole cell lysate

Lane 3 : Human tonsil lysate

Lysates/proteins at 20 µg per lane.

Secondary

All lanes : Goat Anti-Rabbit IgG (HRP) with minimal cross-reactivity
with human IgG at 1/2000 dilution

Predicted band size: 70 kDa

Observed band size: 70 kDa

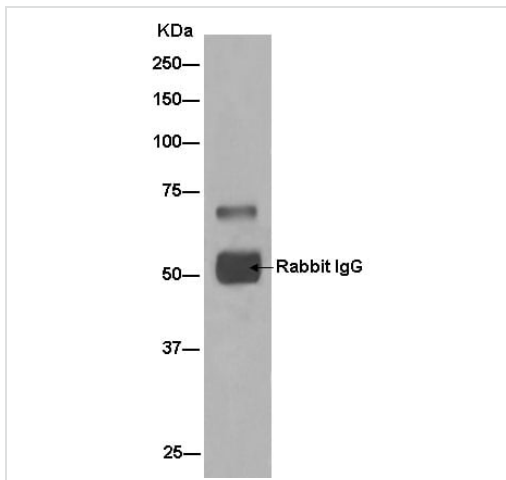
Blocking buffer and concentration: 5% NFDM/TBST

Diluting buffer and concentration: 5% NFDM/TBST

Exposure Time: Lane 1-2: 1 second, Lane 3: 40 seconds.

ab181602 was used as loading controls. **ab205606** was used as a total protein control.

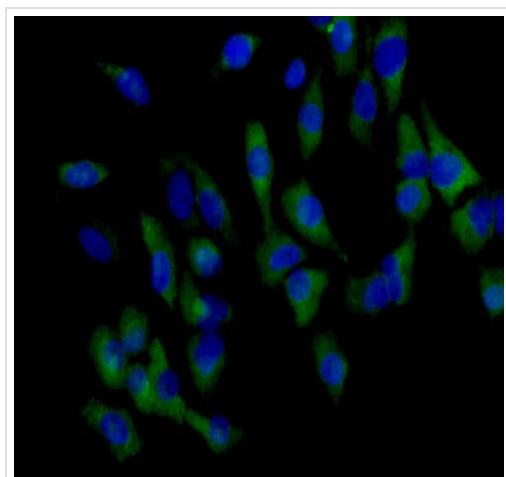
Tag constructed at C-terminal of overexpression vector may interfere the recognition of this antibody to targeted protein.



Immunoprecipitation - Anti-KLHL6 antibody
[EPR13484] (ab182163)

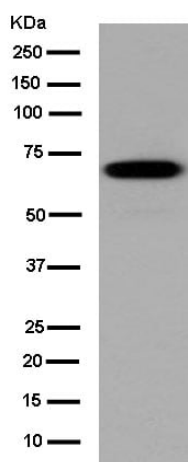
Western blot analysis of immunoprecipitation pellet from A549 cell lysate immunoprecipitated using ab182163 at 1/50 dilution.

Secondary: Goat Anti-Rabbit IgG, (H+L), Peroxidase conjugate at 1/1000 dilution.



Immunocytochemistry/ Immunofluorescence - Anti-KLHL6 antibody [EPR13484] (ab182163)

Immunofluorescent analysis of 4% paraformaldehyde-fixed A549 cells labeling KLHL6 with ab182163 at 1/250 dilution followed by Goat anti rabbit IgG (Alexa Fluor® 488) secondary at 1/200 dilution. Counter stained with DAPI.



Western blot - Anti-KLHL6 antibody [EPR13484]
(ab182163)

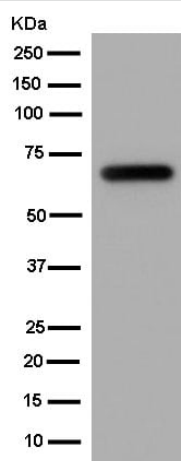
Anti-KLHL6 antibody [EPR13484] (ab182163) at 1/1000 dilution +
A549 cell lysate at 10 µg

Secondary

Goat Anti-Rabbit IgG, (H+L), Peroxidase conjugate at 1/1000
dilution

Predicted band size: 70 kDa

Observed band size: 70 kDa



Western blot - Anti-KLHL6 antibody [EPR13484]
(ab182163)

Anti-KLHL6 antibody [EPR13484] (ab182163) at 1/1000 dilution +
Human fetal kidney lysate at 20 µg

Secondary

Goat Anti-Rabbit IgG H&L (HRP) ([ab136636](#)) at 1/500 dilution

Predicted band size: 70 kDa

Observed band size: 70 kDa

Why choose a recombinant antibody?



Research with confidence
Consistent and reproducible results



Long-term and scalable supply
Recombinant technology



Success from the first experiment
Confirmed specificity



Ethical standards compliant
Animal-free production

Anti-KLHL6 antibody [EPR13484] (ab182163)

Please note: All products are "FOR RESEARCH USE ONLY. NOT FOR USE IN DIAGNOSTIC PROCEDURES"

Our Abpromise to you: Quality guaranteed and expert technical support

- Replacement or refund for products not performing as stated on the datasheet
- Valid for 12 months from date of delivery
- Response to your inquiry within 24 hours
- We provide support in Chinese, English, French, German, Japanese and Spanish
- Extensive multi-media technical resources to help you
- We investigate all quality concerns to ensure our products perform to the highest standards

If the product does not perform as described on this datasheet, we will offer a refund or replacement. For full details of the Abpromise, please visit <https://www.abcam.com/abpromise> or contact our technical team.

Terms and conditions

- Guarantee only valid for products bought direct from Abcam or one of our authorized distributors