

## Product datasheet

### Anti-KLRF1 antibody [EPR23633-150] ab256809

Recombinant RabMAb

2 Images

#### Overview

Product name	Anti-KLRF1 antibody [EPR23633-150]
Description	Rabbit monoclonal [EPR23633-150] to KLRF1
Host species	Rabbit
Tested applications	<b>Suitable for:</b> Flow Cyt <b>Unsuitable for:</b> ICC/IF, IHC-P, IP or WB
Species reactivity	<b>Reacts with:</b> Human
Immunogen	Recombinant fragment. This information is proprietary to Abcam and/or its suppliers.
Positive control	Flow cyt: Human peripheral blood mononuclear cells.
General notes	<p>This product is a recombinant monoclonal antibody, which offers several advantages including:</p> <ul style="list-style-type: none"> <li>- High batch-to-batch consistency and reproducibility</li> <li>- Improved sensitivity and specificity</li> <li>- Long-term security of supply</li> <li>- Animal-free production</li> </ul> <p>For more information <a href="#">see here</a>.</p> <p>Our RabMAb<sup>®</sup> technology is a patented hybridoma-based technology for making rabbit monoclonal antibodies. For details on our patents, please refer to <a href="#">RabMAb<sup>®</sup> patents</a>.</p>

#### Properties

Form	Liquid
Storage instructions	Shipped at 4°C. Store at +4°C short term (1-2 weeks). Upon delivery aliquot. Store at -20°C long term. Avoid freeze / thaw cycle.
Storage buffer	Preservative: 0.01% Sodium azide Constituents: 59.94% PBS, 40% Glycerol (glycerin, glycerine), 0.05% BSA
Purity	Protein A purified
Clonality	Monoclonal
Clone number	EPR23633-150
Isotype	IgG

Applications

**The Abpromise guarantee** Our **Abpromise guarantee** covers the use of ab256809 in the following tested applications. The application notes include recommended starting dilutions; optimal dilutions/concentrations should be determined by the end user.

Application	Abreviews	Notes
Flow Cyt		1/500.

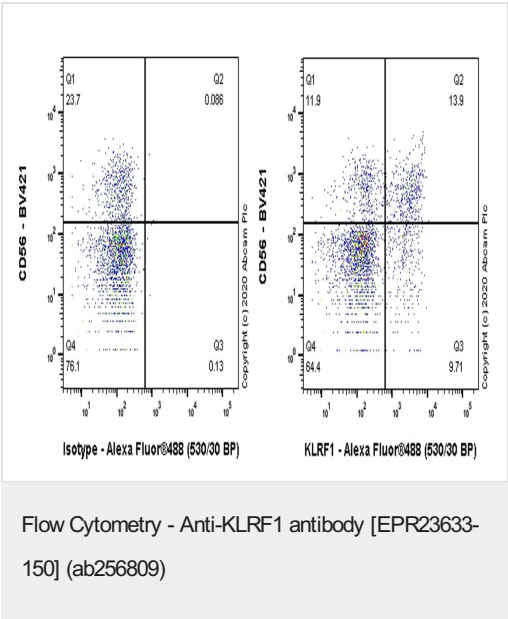
**Application notes** Is unsuitable for ICC/IF,IHC-P,IP or WB.

Target

**Relevance** KLRF1 is involved in the natural killer mediated cytotoxicity of PHA-induced lymphoblasts.

**Cellular localization** Membrane; Single-pass type II membrane protein

Images



Flow cytometric analysis of human peripheral blood mononuclear cell (PBMC) cells labelling KLRF1 with ab256809 at 1/500 dilution (0.1ug) (Right) compared with a Rabbit monoclonal IgG (**ab172730**) isotype control (Left). Goat anti rabbit IgG (Alexa Fluor® 488, **ab150077**) at 1/2000 dilution was used as the secondary antibody. Cells were stained with rabbit IgG or ab256809. Then stained with anti-CD56 conjugated to BV421. Gated on viable cells.

### Why choose a recombinant antibody?



**Research with confidence**  
Consistent and reproducible results



**Long-term and scalable supply**  
Recombinant technology



**Success from the first experiment**  
Confirmed specificity



**Ethical standards compliant**  
Animal-free production

Anti-KLRF1 antibody [EPR23633-150] (ab256809)

**Please note:** All products are "FOR RESEARCH USE ONLY. NOT FOR USE IN DIAGNOSTIC PROCEDURES"

### Our Abpromise to you: Quality guaranteed and expert technical support

---

- Replacement or refund for products not performing as stated on the datasheet
- Valid for 12 months from date of delivery
- Response to your inquiry within 24 hours
- We provide support in Chinese, English, French, German, Japanese and Spanish
- Extensive multi-media technical resources to help you
- We investigate all quality concerns to ensure our products perform to the highest standards

If the product does not perform as described on this datasheet, we will offer a refund or replacement. For full details of the Abpromise, please visit <https://www.abcam.com/abpromise> or contact our technical team.

### Terms and conditions

---

- Guarantee only valid for products bought direct from Abcam or one of our authorized distributors