




Product datasheet

Anti-KMT1B / SUV39H2 antibody - C-terminal ab189842

[1 References](#) [1 Image](#)

Overview

Product name	Anti-KMT1B / SUV39H2 antibody - C-terminal
Description	Rabbit polyclonal to KMT1B / SUV39H2 - C-terminal
Host species	Rabbit
Tested applications	Suitable for: WB
Species reactivity	Reacts with: Mouse, Human Predicted to work with: Chicken, Cow, Cynomolgus monkey, Xenopus tropicalis 
Immunogen	Recombinant fragment corresponding to Human KMT1B/ SUV39H2 aa 100-350. Database link: Q9H5I1  Run BLAST with  Run BLAST with
General notes	<p>The Life Science industry has been in the grips of a reproducibility crisis for a number of years. Abcam is leading the way in addressing this with our range of recombinant monoclonal antibodies and knockout edited cell lines for gold-standard validation. Please check that this product meets your needs before purchasing.</p> <p>If you have any questions, special requirements or concerns, please send us an inquiry and/or contact our Support team ahead of purchase. Recommended alternatives for this product can be found below, along with publications, customer reviews and Q&As</p>

Properties

Form	Liquid
Storage instructions	Shipped at 4°C. Store at +4°C short term (1-2 weeks). Upon delivery aliquot. Store at -20°C long term. Avoid freeze / thaw cycle.
Storage buffer	pH: 7.30 Preservative: 0.02% Sodium azide Constituents: 50% Glycerol, 49% PBS
Purity	Immunogen affinity purified
Clonality	Polyclonal
Isotype	IgG

Applications

The Abpromise guarantee

Our **Abpromise guarantee** covers the use of ab189842 in the following tested applications.

The application notes include recommended starting dilutions; optimal dilutions/concentrations should be determined by the end user.

Application	Abreviews	Notes
WB		1/500 - 1/2000. Predicted molecular weight: 47 kDa.

Target

Function

Histone methyltransferase that specifically trimethylates 'Lys-9' of histone H3 using monomethylated H3 'Lys-9' as substrate. H3 'Lys-9' trimethylation represents a specific tag for epigenetic transcriptional repression by recruiting HP1 (CBX1, CBX3 and/or CBX5) proteins to methylated histones. Mainly functions in heterochromatin regions, thereby playing a central role in the establishment of constitutive heterochromatin at pericentric and telomere regions. H3 'Lys-9' trimethylation is also required to direct DNA methylation at pericentric repeats. SUV39H1 is targeted to histone H3 via its interaction with RB1 and is involved in many processes, such as cell cycle regulation, transcriptional repression and regulation of telomere length. May participate in regulation of higher order chromatin organization during spermatogenesis.

Sequence similarities

Belongs to the histone-lysine methyltransferase family. Suvar3-9 subfamily.
Contains 1 chromo domain.
Contains 1 post-SET domain.
Contains 1 pre-SET domain.
Contains 1 SET domain.

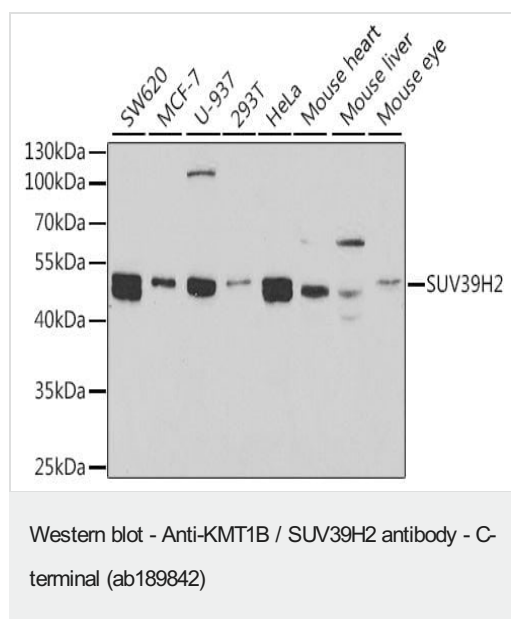
Domain

Although the SET domain contains the active site of enzymatic activity, both pre-SET and post-SET domains are required for methyltransferase activity. The SET domain also participates to stable binding to heterochromatin.

Cellular localization

Nucleus. Chromosome > centromere. Associates with centromeric constitutive heterochromatin.

Images



All lanes : Anti-KMT1B / SUV39H2 antibody - C-terminal (ab189842) at 1/1000 dilution

Lane 1 : SW620 cell lysate

Lane 2 : MCF-7 cell lysate

Lane 3 : U-937 cell lysate

Lane 4 : 293T cell lysate

Lane 5 : HeLa cell lysate

Lane 6 : Mouse heart tissue lysate

Lane 7 : Mouse liver tissue lysate

Lane 8 : Mouse eye tissue lysate

Lysates/proteins at 25 µg per lane.

Secondary

All lanes : HRP Goat Anti-Rabbit IgG (H+L)

Predicted band size: 47 kDa

Blocking buffer: 3% nonfat dry milk in TBST.

Please note: All products are "FOR RESEARCH USE ONLY. NOT FOR USE IN DIAGNOSTIC PROCEDURES"

Our Abpromise to you: Quality guaranteed and expert technical support

- Replacement or refund for products not performing as stated on the datasheet
- Valid for 12 months from date of delivery
- Response to your inquiry within 24 hours
- We provide support in Chinese, English, French, German, Japanese and Spanish
- Extensive multi-media technical resources to help you
- We investigate all quality concerns to ensure our products perform to the highest standards

If the product does not perform as described on this datasheet, we will offer a refund or replacement. For full details of the Abpromise, please visit <https://www.abcam.com/abpromise> or contact our technical team.

Terms and conditions

- Guarantee only valid for products bought direct from Abcam or one of our authorized distributors