


Product datasheet

Anti-KMT3C / SMYD2 antibody ab108217

★★★★★ [3 Abreviews](#) [4 References](#) [3 Images](#)

Overview

Product name	Anti-KMT3C / SMYD2 antibody
Description	Rabbit polyclonal to KMT3C / SMYD2
Host species	Rabbit
Tested applications	Suitable for: WB, IP
Species reactivity	Reacts with: Mouse, Human Predicted to work with: Rabbit, Horse, Chicken, Guinea pig, Cow, Dog, Turkey, Pig, Rhesus monkey, Gorilla, Orangutan, Platypus 
Immunogen	Synthetic peptide. This information is proprietary to Abcam and/or its suppliers.
Positive control	HeLa, 293T and NIH 3T3 whole cell lysates
General notes	<p>The Life Science industry has been in the grips of a reproducibility crisis for a number of years. Abcam is leading the way in addressing this with our range of recombinant monoclonal antibodies and knockout edited cell lines for gold-standard validation. Please check that this product meets your needs before purchasing.</p> <p>If you have any questions, special requirements or concerns, please send us an inquiry and/or contact our Support team ahead of purchase. Recommended alternatives for this product can be found below, along with publications, customer reviews and Q&As</p>

Properties

Form	Liquid
Storage instructions	Shipped at 4°C. Upon delivery aliquot and store at -20°C. Avoid freeze / thaw cycles.
Storage buffer	pH: 7 Preservative: 0.09% Sodium azide Constituent: Tris citrate/phosphate
Purity	Immunogen affinity purified
Purification notes	ab108217 was affinity purified using an epitope specific to KMT3C / SMYD2 immobilized on solid support.
Clonality	Polyclonal
Isotype	IgG

Applications

The Abpromise guarantee

Our **Abpromise guarantee** covers the use of ab108217 in the following tested applications.

The application notes include recommended starting dilutions; optimal dilutions/concentrations should be determined by the end user.

Application	Abreviews	Notes
WB	★★★★★ (3)	1/2000 - 1/10000. Predicted molecular weight: 50 kDa.
IP		Use at 2-5 µg/mg of lysate.

Target

Function

Protein-lysine N-methyltransferase that methylates both histones and non-histone proteins. Specifically methylates histone H3 'Lys-4' (H3K4me) and dimethylates histone H3 'Lys-36' (H3K36me2). Has also methyltransferase activity toward non-histone proteins such as p53/TP53 and RB1. Monomethylates 'Lys-370' of p53/TP53, leading to decreased DNA-binding activity and subsequent transcriptional regulation activity of p53/TP53. Monomethylates 'Lys-860' of RB1/RB.

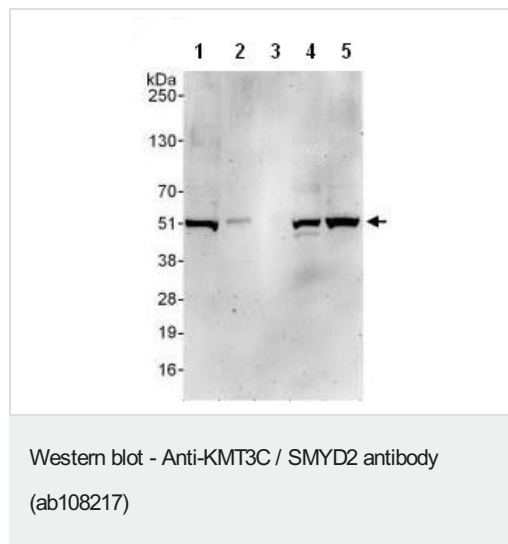
Sequence similarities

Contains 1 MYND-type zinc finger.
Contains 1 SET domain.

Cellular localization

Cytoplasm > cytosol. Nucleus.

Images



All lanes : Anti-KMT3C / SMYD2 antibody (ab108217) at 0.1 µg/ml

Lane 1 : HeLa whole cell
lysate at 50 µg

Lane 2 : HeLa whole cell
lysate at 15 µg

Lane 3 : HeLa whole cell
lysate at 5 µg

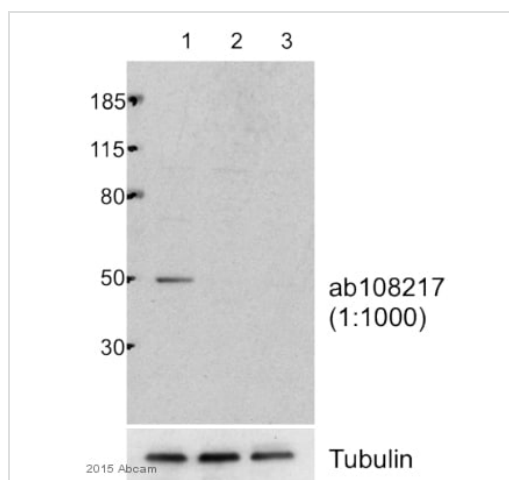
Lane 4 : 293T whole cell
lysate at 50 µg

Lane 5 : NIH 3T3 whole cell
lysate at 50 µg

Developed using the ECL technique.

Predicted band size: 50 kDa

Exposure time: 3 minutes



Western blot - Anti-KMT3C / SMYD2 antibody
(ab108217)

This image is courtesy of an anonymous Abreview

All lanes : Anti-KMT3C / SMYD2 antibody (ab108217) at 1/1000 dilution

Lane 1 : U2OS whole cell lysate - siRNA targeting luciferase

Lanes 2-3 : U2OS whole cell lysate - siRNA targeting SMYD2

Lysates/proteins at 15 µg per lane.

Secondary

All lanes : HRP-conjugated goat anti-rabbit IgG at 1/1000 dilution

Developed using the ECL technique.

Performed under reducing conditions.

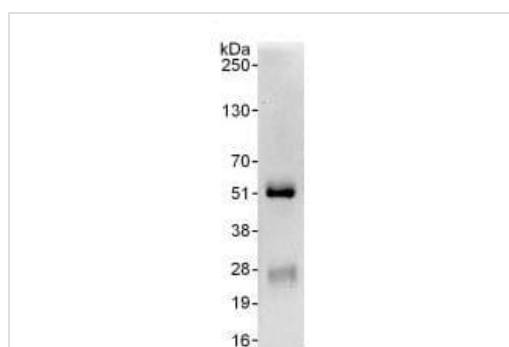
Predicted band size: 50 kDa

Observed band size: 50 kDa

Exposure time: 20 seconds

Blocked with 5% BSA for 1 hour at room temperature.

Primary antibody incubation time: 1 hour.



Immunoprecipitation - Anti-KMT3C / SMYD2
antibody (ab108217)

Detection of KMT3C / SMYD2 by Western blot of Immunoprecipitate.
ab108217, at 1 µg/ml, staining KMT3C / SMYD2 in HeLa whole cell
lysate immunoprecipitated using ab108217 at 6 µg/mg lysate (1
mg/IP; 20% of IP loaded/lane).

Detection: Chemiluminescence with an exposure time of 10
seconds.

Please note: All products are "FOR RESEARCH USE ONLY. NOT FOR USE IN DIAGNOSTIC PROCEDURES"

Our Abpromise to you: Quality guaranteed and expert technical support

- Replacement or refund for products not performing as stated on the datasheet

- Valid for 12 months from date of delivery
- Response to your inquiry within 24 hours
- We provide support in Chinese, English, French, German, Japanese and Spanish
- Extensive multi-media technical resources to help you
- We investigate all quality concerns to ensure our products perform to the highest standards

If the product does not perform as described on this datasheet, we will offer a refund or replacement. For full details of the Abpromise, please visit <https://www.abcam.com/abpromise> or contact our technical team.

Terms and conditions

- Guarantee only valid for products bought direct from Abcam or one of our authorized distributors