

# Anti-KMT4 / Dot1L antibody [EPR22936-138] - BSA and Azide free ab264562

Recombinant RabMAb

4 Images

### Overview

<b>Product name</b>	Anti-KMT4 / Dot1L antibody [EPR22936-138] - BSA and Azide free
<b>Description</b>	Rabbit monoclonal [EPR22936-138] to KMT4 / Dot1L - BSA and Azide free
<b>Host species</b>	Rabbit
<b>Tested applications</b>	<b>Suitable for:</b> WB, IHC-P <b>Unsuitable for:</b> ChIP, Flow Cyt, ICC/IF or IP
<b>Species reactivity</b>	<b>Reacts with:</b> Mouse, Rat, Human
<b>Immunogen</b>	Recombinant fragment. This information is proprietary to Abcam and/or its suppliers.
<b>Positive control</b>	WB: HeLa, 293T, K562, RAW264.7, HCT116, NIH/3T3 and C6 lysates. IHC-P: Rat testis, Mouse testis and Human testis tissues.
<b>General notes</b>	ab264562 is the carrier-free version of <a href="#">ab239358</a> .

Our **carrier-free** antibodies are typically supplied in a PBS-only formulation, purified and free of BSA, sodium azide and glycerol. The carrier-free buffer and high concentration allow for increased conjugation efficiency.

This conjugation-ready format is designed for use with fluorochromes, metal isotopes, oligonucleotides, and enzymes, which makes them ideal for antibody labelling, functional and cell-based assays, flow-based assays (e.g. mass cytometry) and Multiplex Imaging applications.

Use our **conjugation kits** for antibody conjugates that are ready-to-use in as little as 20 minutes with <1 minute hands-on-time and 100% antibody recovery: available for fluorescent dyes, HRP, biotin and gold.

This product is compatible with the Maxpar<sup>®</sup> Antibody Labeling Kit from Fluidigm, without the need for antibody preparation. Maxpar<sup>®</sup> is a trademark of Fluidigm Canada Inc.

This product is a recombinant monoclonal antibody, which offers several advantages including:

- High batch-to-batch consistency and reproducibility
- Improved sensitivity and specificity
- Long-term security of supply
- Animal-free production

For more information [see here](#).

Our RabMAb<sup>®</sup> technology is a patented hybridoma-based technology for making rabbit monoclonal antibodies. For details on our patents, please refer to [RabMAb<sup>®</sup> patents](#).

## Properties

<b>Form</b>	Liquid
<b>Storage instructions</b>	Shipped at 4°C. Store at +4°C. Do Not Freeze.
<b>Storage buffer</b>	pH: 7.2 Constituent: PBS
<b>Carrier free</b>	Yes
<b>Purity</b>	Protein A purified
<b>Clonality</b>	Monoclonal
<b>Clone number</b>	EPR22936-138
<b>Isotype</b>	IgG

## Applications

**The Abpromise guarantee** Our **Abpromise guarantee** covers the use of ab264562 in the following tested applications. The application notes include recommended starting dilutions; optimal dilutions/concentrations should be determined by the end user.

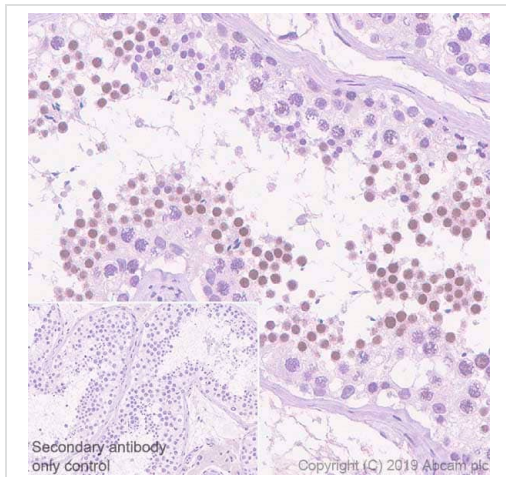
Application	Abreviews	Notes
<b>WB</b>		Use at an assay dependent concentration. Detects a band of approximately 185 kDa (predicted molecular weight: 165 kDa).
<b>IHC-P</b>		Use at an assay dependent concentration. Perform heat mediated antigen retrieval with citrate buffer pH 6 before commencing with IHC staining protocol. In-house IHC data gave positive staining only on testis.

**Application notes** Is unsuitable for ChIP, Flow Cyt, ICC/IF or IP.

## Target

<b>Function</b>	Histone methyltransferase. Methylates 'Lys-79' of histone H3. Nucleosomes are preferred as substrate compared to free histones. Binds to DNA.
<b>Sequence similarities</b>	Belongs to the class I-like SAM-binding methyltransferase superfamily. DOT1 family. Contains 1 DOT1 domain.
<b>Cellular localization</b>	Nucleus.

## Images



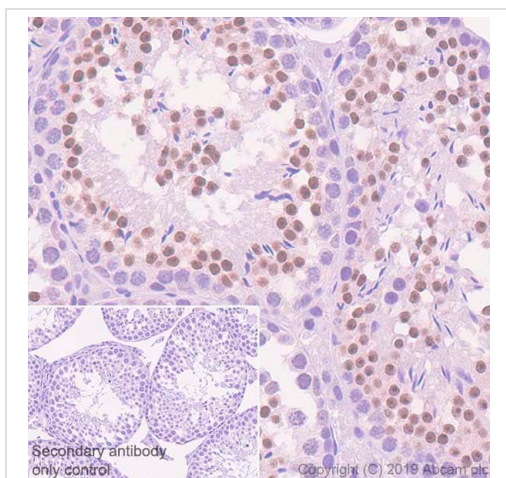
Immunohistochemistry (Formalin/PFA-fixed paraffin-embedded sections) - Anti-KMT4 / Dot1L antibody [EPR22936-138] - BSA and Azide free (ab264562)

Immunohistochemical analysis of paraffin-embedded Human testis tissue labeling KMT4 / Dot1L with **ab239358** at 1/250 dilution (2.78 ug/ml) followed by a ready to use Rabbit specific IHC polymer detection kit HRP/DAB (**ab209101**). Nuclear staining on spermatocytes of human testis. The section was incubated with **ab239358** for 30 mins at room temperature. The immunostaining was performed on a Leica Biosystems BOND® RX instrument. Counterstained with Hematoxylin.

Secondary antibody only control: Secondary antibody is a ready to use Rabbit specific IHC polymer detection kit HRP/DAB (**ab209101**).

Heat mediated antigen retrieval with citrate buffer (pH 6.0, epitope retrieval solution 1) for 20mins

This data was developed using the same antibody clone in a different buffer formulation containing PBS, BSA, glycerol, and sodium azide (**ab239358**).



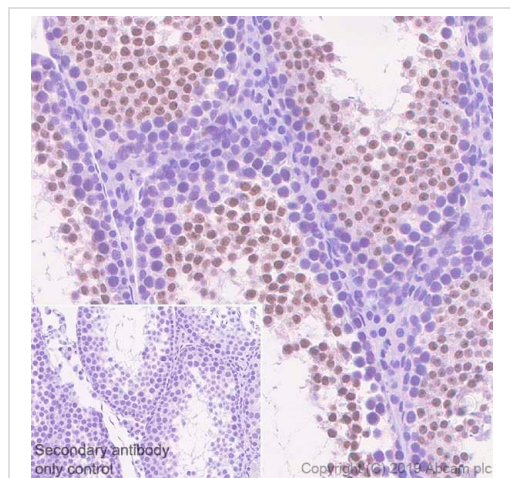
Immunohistochemistry (Formalin/PFA-fixed paraffin-embedded sections) - Anti-KMT4 / Dot1L antibody [EPR22936-138] - BSA and Azide free (ab264562)

Immunohistochemical analysis of paraffin-embedded Mouse testis tissue labeling KMT4 / Dot1L with **ab239358** at 1/4000 dilution (0.17 ug/ml) followed by a ready to use Rabbit specific IHC polymer detection kit HRP/DAB (**ab209101**). Nuclear staining on spermatocytes of mouse testis. The section was incubated with **ab239358** for 30 mins at room temperature. The immunostaining was performed on a Leica Biosystems BOND® RX instrument. Counterstained with Hematoxylin.

Secondary antibody only control: Secondary antibody is a ready to use Rabbit specific IHC polymer detection kit HRP/DAB (**ab209101**).

Heat mediated antigen retrieval with citrate buffer (pH 6.0, epitope retrieval solution 1) for 20mins

This data was developed using the same antibody clone in a different buffer formulation containing PBS, BSA, glycerol, and sodium azide (**ab239358**).



Immunohistochemistry (Formalin/PFA-fixed paraffin-embedded sections) - Anti-KMT4 / Dot1L antibody [EPR22936-138] - BSA and Azide free (ab264562)

Immunohistochemical analysis of paraffin-embedded Rat testis tissue labeling KMT4 / Dot1L with **ab239358** at 1/4000 dilution (0.17 ug/ml) followed by a ready to use Rabbit specific IHC polymer detection kit HRP/DAB (**ab209101**). Nuclear staining on spermatocytes of rat testis. The section was incubated with **ab239358** for 30 mins at room temperature. The immunostaining was performed on a Leica Biosystems BOND® RX instrument. Counterstained with Hematoxylin.

Secondary antibody only control: Secondary antibody is a ready to use Rabbit specific IHC polymer detection kit HRP/DAB (**ab209101**).

Heat mediated antigen retrieval with citrate buffer (pH 6.0, epitope retrieval solution 1) for 20mins

This data was developed using the same antibody clone in a different buffer formulation containing PBS, BSA, glycerol, and sodium azide (**ab239358**).

Why choose a recombinant antibody?

 <p><b>Research with confidence</b> Consistent and reproducible results</p>	 <p><b>Long-term and scalable supply</b> Recombinant technology</p>
 <p><b>Success from the first experiment</b> Confirmed specificity</p>	 <p><b>Ethical standards compliant</b> Animal-free production</p>

Anti-KMT4 / Dot1L antibody [EPR22936-138] - BSA and Azide free (ab264562)

**Please note:** All products are "FOR RESEARCH USE ONLY. NOT FOR USE IN DIAGNOSTIC PROCEDURES"

### Our Abpromise to you: Quality guaranteed and expert technical support

- Replacement or refund for products not performing as stated on the datasheet
- Valid for 12 months from date of delivery

- Response to your inquiry within 24 hours
- We provide support in Chinese, English, French, German, Japanese and Spanish
- Extensive multi-media technical resources to help you
- We investigate all quality concerns to ensure our products perform to the highest standards

If the product does not perform as described on this datasheet, we will offer a refund or replacement. For full details of the Abpromise, please visit <https://www.abcam.com/abpromise> or contact our technical team.

#### **Terms and conditions**

---

- Guarantee only valid for products bought direct from Abcam or one of our authorized distributors