




## Product datasheet

# Anti-KPC2 antibody - C-terminal ab177519

[1 References](#) [3 Images](#)

### Overview

<b>Product name</b>	Anti-KPC2 antibody - C-terminal
<b>Description</b>	Rabbit polyclonal to KPC2 - C-terminal
<b>Host species</b>	Rabbit
<b>Tested applications</b>	<b>Suitable for:</b> IHC-P, IP, WB
<b>Species reactivity</b>	<b>Reacts with:</b> Mouse, Human <b>Predicted to work with:</b> Rat, Horse, Guinea pig, Dog, Chimpanzee, Rhesus monkey, Gorilla, Chinese hamster, Orangutan 
<b>Immunogen</b>	<p>Synthetic peptide within Human KPC2 aa 325-375 (C terminal). The exact sequence is proprietary. NP_057256.2</p> <p>Sequence:</p> <p>LLGDRK PSPEELDKGIDPDSPLFQAILDNPVVQLGL TNPKTLLAFE DMLLEN</p> <p>Database link: <a href="#">Q9BSL1</a></p> <p> <a href="#">Run BLAST with</a>  <a href="#">Run BLAST with</a></p>
<b>Positive control</b>	WB: 293T, HeLa, Jurkat and TCMK1 whole cell lysates. IP: HEK-293T cell lysates. IHC-P: Human colon carcinoma tissue.
<b>General notes</b>	<p>The Life Science industry has been in the grips of a reproducibility crisis for a number of years. Abcam is leading the way in addressing this with our range of recombinant monoclonal antibodies and knockout edited cell lines for gold-standard validation. Please check that this product meets your needs before purchasing.</p> <p>If you have any questions, special requirements or concerns, please send us an inquiry and/or contact our Support team ahead of purchase. Recommended alternatives for this product can be found below, along with publications, customer reviews and Q&amp;As</p>

### Properties

<b>Form</b>	Liquid
<b>Storage instructions</b>	Shipped at 4°C. Store at +4°C short term (1-2 weeks). Upon delivery aliquot. Store at -20°C long term. Avoid freeze / thaw cycle.
<b>Storage buffer</b>	pH: 7

Preservative: 0.09% Sodium azide  
Constituent: 99% Tris citrate/phosphate

pH 7 to 8

**Purity** Immunogen affinity purified  
**Clonality** Polyclonal  
**Isotype** IgG

## Applications

**The Abpromise guarantee** Our **Abpromise guarantee** covers the use of ab177519 in the following tested applications.  
The application notes include recommended starting dilutions; optimal dilutions/concentrations should be determined by the end user.

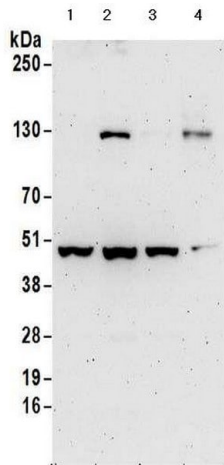
Application	Abreviews	Notes
IHC-P		1/500 - 1/2000. Perform heat mediated antigen retrieval with citrate buffer pH 6 before commencing with IHC staining protocol.
IP		Use at 2-10 µg/mg of lysate.
WB		1/2000 - 1/10000. Predicted molecular weight: 45 kDa.

## Target

**Relevance** KPC2 (Kip1 ubiquitylation-promoting complex 2) together with KPC1 forms the ubiquitin ligase KPC, which regulates degradation of the cyclin-dependent kinase inhibitor p27 at the G1 phase of the cell cycle. KPC2 contains a ubiquitin-like (UBL) domain, two ubiquitin-associated (UBA) domains, and a heat shock chaperonin-binding (STI1) domain.

**Cellular localization** Cytoplasmic

## Images



Western blot - Anti-KPC2 antibody - C-terminal (ab177519)

**All lanes :** Anti-KPC2 antibody - C-terminal (ab177519) at 0.1 µg/ml

**Lane 1 :** 293T whole cell lysate

**Lane 2 :** HeLa whole cell lysate

**Lane 3 :** Jurkat whole cell lysate

**Lane 4 :** TCMK1 whole cell lysate

Lysates/proteins at 50 µg per lane.

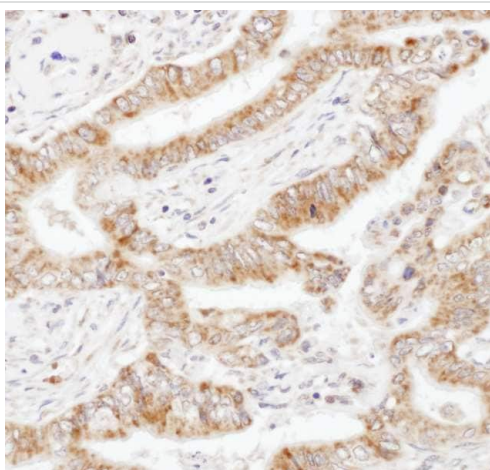
### Secondary

**All lanes :** Anti-rabbit HRP conjugated antibody

Developed using the ECL technique.

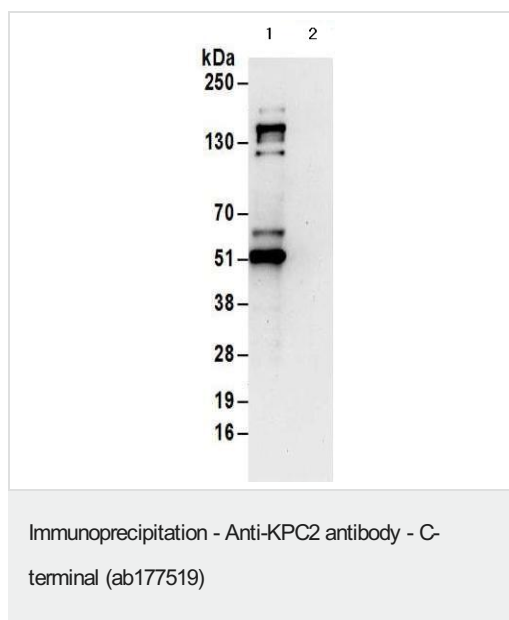
**Predicted band size:** 45 kDa

**Exposure time:** 3 minutes



Immunohistochemistry (Formalin/PFA-fixed paraffin-embedded sections) - Anti-KPC2 antibody - C-terminal (ab177519)

Immunohistochemical analysis of human colon carcinoma tissue labeling KPC2 with ab177519 at a 1/1000 dilution.



**All lanes :** Anti-KPC2 antibody - C-terminal (ab177519) at 1 µg/ml

**Lane 1 :** 293T whole cell lysate (1 mg for IP; 20% of IP loaded) immunoprecipitated using ab177519 at 6 µg/mg lysate.

**Lane 2 :** 293T whole cell lysate (1 mg for IP; 20% of IP loaded) immunoprecipitated using Control IgG at 6 µg/mg lysate.

### Secondary

**All lanes :** Anti-rabbit HRP conjugated antibody

Developed using the ECL technique.

**Exposure time:** 30 seconds

**Please note:** All products are "FOR RESEARCH USE ONLY. NOT FOR USE IN DIAGNOSTIC PROCEDURES"

### Our Abpromise to you: Quality guaranteed and expert technical support

- Replacement or refund for products not performing as stated on the datasheet
- Valid for 12 months from date of delivery
- Response to your inquiry within 24 hours
- We provide support in Chinese, English, French, German, Japanese and Spanish
- Extensive multi-media technical resources to help you
- We investigate all quality concerns to ensure our products perform to the highest standards

If the product does not perform as described on this datasheet, we will offer a refund or replacement. For full details of the Abpromise, please visit <https://www.abcam.com/abpromise> or contact our technical team.

### Terms and conditions

- Guarantee only valid for products bought direct from Abcam or one of our authorized distributors