

## Product datasheet

# Anti-KPNA6 antibody ab105350

[1 References](#) [3 Images](#)

### Overview

---

<b>Product name</b>	Anti-KPNA6 antibody
<b>Description</b>	Rabbit polyclonal to KPNA6
<b>Host species</b>	Rabbit
<b>Specificity</b>	ab105350 is predicted to not crossreact with other Importin alpha family members.
<b>Tested applications</b>	<b>Suitable for:</b> ICC/IF, WB
<b>Species reactivity</b>	<b>Reacts with:</b> Human
<b>Immunogen</b>	A 13 amino acid peptide from a region within the N terminus of Human KPNA6 (CAH71948).
<b>Positive control</b>	293 cell lysate
<b>General notes</b>	<p>The Life Science industry has been in the grips of a reproducibility crisis for a number of years. Abcam is leading the way in addressing this with our range of recombinant monoclonal antibodies and knockout edited cell lines for gold-standard validation. Please check that this product meets your needs before purchasing.</p> <p>If you have any questions, special requirements or concerns, please send us an inquiry and/or contact our Support team ahead of purchase. Recommended alternatives for this product can be found below, along with publications, customer reviews and Q&amp;As</p>

### Properties

---

<b>Form</b>	Liquid
<b>Storage instructions</b>	Shipped at 4°C. Store at +4°C.
<b>Storage buffer</b>	pH: 7.2 Preservative: 0.02% Sodium azide Constituent: PBS
<b>Purity</b>	Immunogen affinity purified
<b>Clonality</b>	Polyclonal
<b>Isotype</b>	IgG

### Applications

---

The **Abpromise guarantee** Our **Abpromise guarantee** covers the use of ab105350 in the following tested applications.

The application notes include recommended starting dilutions; optimal dilutions/concentrations should be determined by the end user.

Application	Abreviews	Notes
ICC/IF		Use a concentration of 20 µg/ml.
WB		Use a concentration of 1 - 2 µg/ml. Predicted molecular weight: 60 kDa.

## Target

### Function

Functions in nuclear protein import as an adapter protein for nuclear receptor KPNB1. Binds specifically and directly to substrates containing either a simple or bipartite NLS motif. Docking of the importin/substrate complex to the nuclear pore complex (NPC) is mediated by KPNB1 through binding to nucleoporin FxFG repeats and the complex is subsequently translocated through the pore by an energy requiring, Ran-dependent mechanism. At the nucleoplasmic side of the NPC, Ran binds to importin-beta and the three components separate and importin-alpha and -beta are re-exported from the nucleus to the cytoplasm where GTP hydrolysis releases Ran from importin. The directionality of nuclear import is thought to be conferred by an asymmetric distribution of the GTP- and GDP-bound forms of Ran between the cytoplasm and nucleus.

### Tissue specificity

Widely expressed.

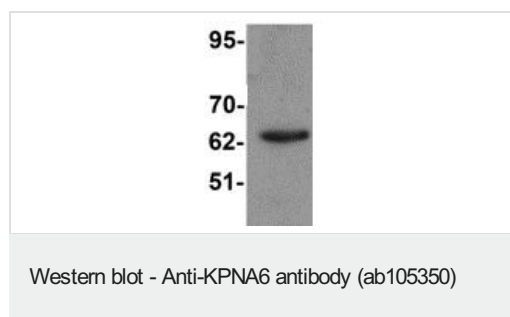
### Sequence similarities

Belongs to the importin alpha family.  
Contains 10 ARM repeats.  
Contains 1 IBB domain.

### Form

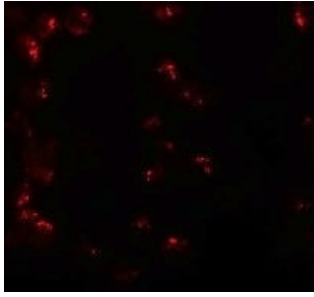
Cellular location: cytoplasm; nucleus.

## Images



Anti-KPNA6 antibody (ab105350) at 1 µg/ml + 293 cell lysate at 15 µg

**Predicted band size:** 60 kDa



Immunofluorescence of KPNA6 in 293 cells with ab105350 at 20 ug/mL.

Immunocytochemistry/ Immunofluorescence - Anti-KPNA6 antibody (ab105350)

Immunocytochemistry/ Immunofluorescence - Anti-KPNA6 antibody (ab105350)

Immunofluorescence of KPNA6 in 293 cells using ab105350 at 20 ug/ml.

**Please note:** All products are "FOR RESEARCH USE ONLY. NOT FOR USE IN DIAGNOSTIC PROCEDURES"

### **Our Abpromise to you: Quality guaranteed and expert technical support**

---

- Replacement or refund for products not performing as stated on the datasheet
- Valid for 12 months from date of delivery
- Response to your inquiry within 24 hours
  
- We provide support in Chinese, English, French, German, Japanese and Spanish
- Extensive multi-media technical resources to help you
- We investigate all quality concerns to ensure our products perform to the highest standards

If the product does not perform as described on this datasheet, we will offer a refund or replacement. For full details of the Abpromise, please visit <https://www.abcam.com/abpromise> or contact our technical team.

### **Terms and conditions**

---

- Guarantee only valid for products bought direct from Abcam or one of our authorized distributors