

Product datasheet

Anti-KRTHA3B antibody ab154339

[3 Images](#)

Overview

Product name	Anti-KRTHA3B antibody
Description	Rabbit polyclonal to KRTHA3B
Host species	Rabbit
Tested applications	Suitable for: WB, IHC-P, ICC/IF
Species reactivity	Reacts with: Human
Immunogen	Recombinant fragment, corresponding to a region within amino acids 140-404 of Human KRTHA3B (Uniprot ID: Q14525)
Positive control	HeLa cells and whole cell lysate, paraffin-embedded Cal27 xenograft
General notes	<p>The Life Science industry has been in the grips of a reproducibility crisis for a number of years. Abcam is leading the way in addressing this with our range of recombinant monoclonal antibodies and knockout edited cell lines for gold-standard validation. Please check that this product meets your needs before purchasing.</p> <p>If you have any questions, special requirements or concerns, please send us an inquiry and/or contact our Support team ahead of purchase. Recommended alternatives for this product can be found below, along with publications, customer reviews and Q&As</p>

Properties

Form	Liquid
Storage instructions	Shipped at 4°C. Upon delivery aliquot. Store at -20°C or -80°C. Avoid freeze / thaw cycle.
Storage buffer	<p>pH: 7.00</p> <p>Preservative: 0.01% Thimerosal (merthiolate)</p> <p>Constituents: 79.99% PBS, 20% Glycerol (glycerin, glycerine)</p>
Purity	Immunogen affinity purified
Clonality	Polyclonal
Isotype	IgG

Applications

The Abpromise guarantee Our **Abpromise guarantee** covers the use of ab154339 in the following tested applications.

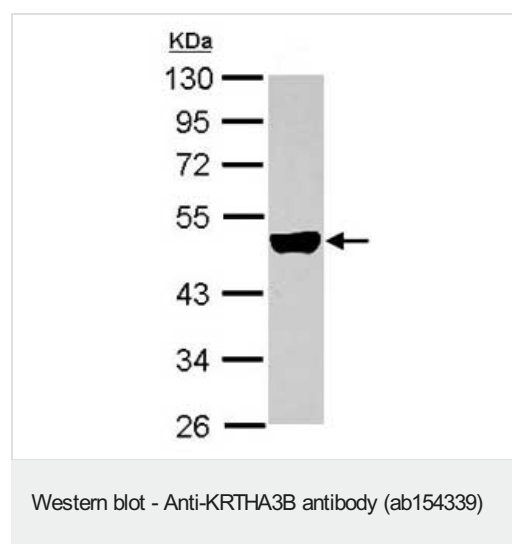
The application notes include recommended starting dilutions; optimal dilutions/concentrations should be determined by the end user.

Application	Abreviews	Notes
WB		1/5000 - 1/20000. Predicted molecular weight: 46 kDa.
IHC-P		1/100 - 1/1000. Perform heat mediated antigen retrieval with citrate buffer pH 6 before commencing with IHC staining protocol. Alternatively Tris-EDTA buffer (pH8.0) may be used.
ICC/IF		1/100 - 1/1000.

Target

Sequence similarities Belongs to the intermediate filament family.

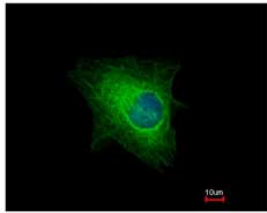
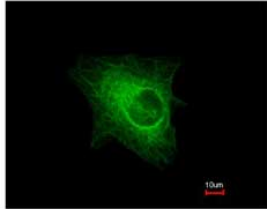
Images



Anti-KRTHA3B antibody (ab154339) at 1/10000 dilution + HeLa whole cell lysate at 30 µg

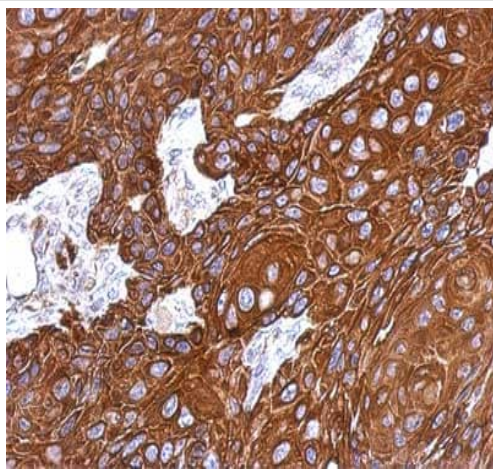
Predicted band size: 46 kDa

10% SDS PAGE



Immunofluorescence analysis of methanol-fixed HeLa cells labeling KRTHA3B with ab154339 at 1/500 dilution (green) and counterstained with Hoechst 3342 in bottom panel (blue).

Immunocytochemistry/ Immunofluorescence - Anti-KRTHA3B antibody (ab154339)



Immunohistochemical analysis of paraffin-embedded Cal27 xenograft, labeling KRTHA3B with ab154339 at 1/500 dilution

Immunohistochemistry (Formalin/PFA-fixed paraffin-embedded sections) - Anti-KRTHA3B antibody (ab154339)

Please note: All products are "FOR RESEARCH USE ONLY. NOT FOR USE IN DIAGNOSTIC PROCEDURES"

Our Abpromise to you: Quality guaranteed and expert technical support

- Replacement or refund for products not performing as stated on the datasheet
- Valid for 12 months from date of delivery
- Response to your inquiry within 24 hours
- We provide support in Chinese, English, French, German, Japanese and Spanish
- Extensive multi-media technical resources to help you
- We investigate all quality concerns to ensure our products perform to the highest standards

If the product does not perform as described on this datasheet, we will offer a refund or replacement. For full details of the Abpromise, please visit <https://www.abcam.com/abpromise> or contact our technical team.

Terms and conditions

- Guarantee only valid for products bought direct from Abcam or one of our authorized distributors