


Anti-Ku70 + Ku80 antibody ab53126

[4 References](#) [2 Images](#)

Overview

Product name	Anti-Ku70 + Ku80 antibody
Description	Rabbit polyclonal to Ku70 + Ku80
Host species	Rabbit
Tested applications	Suitable for: WB, IHC-P
Species reactivity	Reacts with: Human Predicted to work with: Mouse, Rat 
Immunogen	A synthetic peptide derived from human Ku70 + Ku80.
Positive control	LoVo cell extracts and human breast carcinoma tissue.
General notes	<p>The Life Science industry has been in the grips of a reproducibility crisis for a number of years. Abcam is leading the way in addressing this with our range of recombinant monoclonal antibodies and knockout edited cell lines for gold-standard validation. Please check that this product meets your needs before purchasing.</p> <p>If you have any questions, special requirements or concerns, please send us an inquiry and/or contact our Support team ahead of purchase. Recommended alternatives for this product can be found below, along with publications, customer reviews and Q&As</p>

Properties

Form	Liquid
Storage instructions	Shipped at 4°C. Store at -20°C. Stable for 12 months at -20°C.
Storage buffer	pH: 7.40 Preservative: 0.02% Sodium azide Constituents: 50% Glycerol (glycerin, glycerine), 0.87% Sodium chloride, PBS Without Mg+2 and Ca+2
Purity	Immunogen affinity purified
Purification notes	ab53126 was affinity-purified from rabbit antiserum by affinity-chromatography using epitope-specific immunogen.
Clonality	Polyclonal
Isotype	IgG

Applications

The Abpromise guarantee

Our **Abpromise guarantee** covers the use of ab53126 in the following tested applications.

The application notes include recommended starting dilutions; optimal dilutions/concentrations should be determined by the end user.

Application	Abreviews	Notes
WB		
IHC-P		

Application notes

ELISA: 1/20000.

IHC-P: 1/50 - 1/100.

WB: 1/300 - 1/1000. Detects bands of approximately 70 and 83 kDa (predicted molecular weight: 70 and 83 kDa).

Not yet tested in other applications.

Optimal dilutions/concentrations should be determined by the end user.

Target

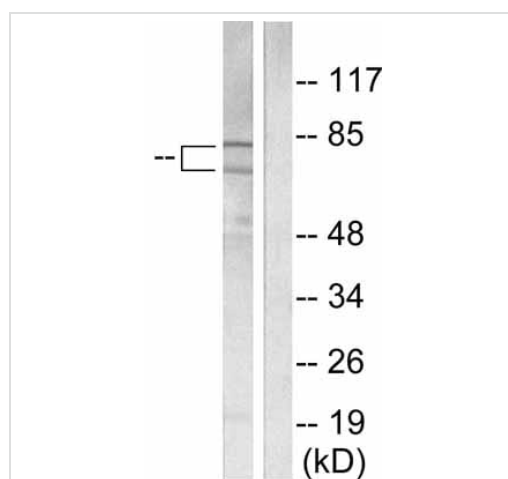
Relevance

The Ku autoantigen is a heterodimer of 70kDa (p70) and 80kDa (p80) proteins. The p70 / p80 dimer is important for function of a 460kDa DNA-dependent protein kinase that phosphorylates certain transcription factors, including Sp1, Oct-1, p53, and SV40 large T antigen in vitro. The Ku protein plays a role in cell signaling, proliferation, DNA repair, replication, transcriptional activation, and apoptosis.

Cellular localization

Nuclear

Images



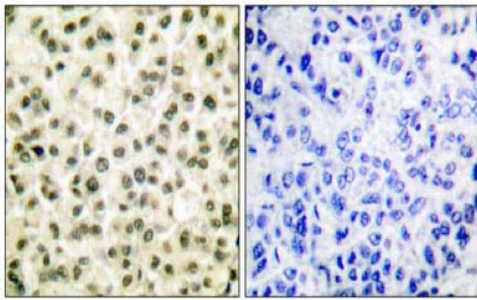
Western blot - Anti-Ku70 + Ku80 antibody (ab53126)

All lanes : Anti-Ku70 + Ku80 antibody (ab53126) at 1/300 dilution

Lane 1 : LoVo cell extract

Lane 2 : LoVo cell extract with immunising peptide

Predicted band size: 70 , 83 kDa



Peptide - +

Immunohistochemistry (Formalin/PFA-fixed paraffin-embedded sections) - Anti-Ku70 + Ku80 antibody (ab53126)

ab53126 at 1/50 dilution staining Ku70 + Ku80 in human breast carcinoma by Immunohistochemistry, Paraffin embedded tissue in the absence and presence of the immunising peptide.

Please note: All products are "FOR RESEARCH USE ONLY. NOT FOR USE IN DIAGNOSTIC PROCEDURES"

Our Abpromise to you: Quality guaranteed and expert technical support

- Replacement or refund for products not performing as stated on the datasheet
- Valid for 12 months from date of delivery
- Response to your inquiry within 24 hours
- We provide support in Chinese, English, French, German, Japanese and Spanish
- Extensive multi-media technical resources to help you
- We investigate all quality concerns to ensure our products perform to the highest standards

If the product does not perform as described on this datasheet, we will offer a refund or replacement. For full details of the Abpromise, please visit <https://www.abcam.com/abpromise> or contact our technical team.

Terms and conditions

- Guarantee only valid for products bought direct from Abcam or one of our authorized distributors