




Anti-Lactate Dehydrogenase antibody ab191332

[17 References](#) [1 Image](#)

Overview

Product name	Anti-Lactate Dehydrogenase antibody
Description	Goat polyclonal to Lactate Dehydrogenase
Host species	Goat
Tested applications	Suitable for: WB
Species reactivity	Reacts with: Human Predicted to work with: Mammals 
Immunogen	Full length native protein (purified) corresponding to Rabbit Lactate Dehydrogenase aa 1 to the C-terminus. (Isolated from rabbit muscle). Database link: P13491  Run BLAST with  Run BLAST with
General notes	<p>The Life Science industry has been in the grips of a reproducibility crisis for a number of years. Abcam is leading the way in addressing this with our range of recombinant monoclonal antibodies and knockout edited cell lines for gold-standard validation. Please check that this product meets your needs before purchasing.</p> <p>If you have any questions, special requirements or concerns, please send us an inquiry and/or contact our Support team ahead of purchase. Recommended alternatives for this product can be found below, along with publications, customer reviews and Q&As</p>

Properties

Form	Liquid
Storage instructions	Shipped at 4°C. Store at +4°C short term (1-2 weeks). Upon delivery aliquot. Store at -20°C long term. Avoid freeze / thaw cycle.
Storage buffer	pH: 6.50 Preservative: 0.01% Sodium azide Constituents: 0.87% Sodium chloride, 0.42% Potassium phosphate
Purity	IgG fraction
Purification notes	ab191332 is an IgG fraction antibody purified from monospecific antiserum by a multi-step process which includes delipidation, salt fractionation and ion exchange chromatography followed by extensive dialysis against buffer.
Clonality	Polyclonal

Isotype

IgG

Applications

The Abpromise guarantee

Our **Abpromise guarantee** covers the use of ab191332 in the following tested applications.

The application notes include recommended starting dilutions; optimal dilutions/concentrations should be determined by the end user.

Application	Abreviews	Notes
WB		1/1000 - 1/5000. Detects a band of approximately 36 kDa (predicted molecular weight: 37 kDa).

Target

Pathway

Fermentation; pyruvate fermentation to lactate; (S)-lactate from pyruvate: step 1/1.

Involvement in disease

Defects in LDHA are the cause of glycogen storage disease type 11 (GSD11) [MIM:612933]. A metabolic disorder that results in exertional myoglobinuria, pain, cramps and easy fatigue.

Sequence similarities

Belongs to the LDH/MDH superfamily. LDH family.

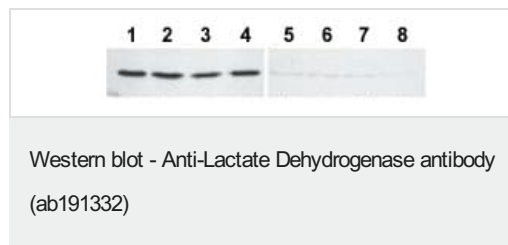
Post-translational modifications

ISGylated.

Cellular localization

Cytoplasm.

Images



All lanes : Anti-Lactate Dehydrogenase antibody (ab191332) at 1/400 dilution

Lanes 1-4 : HeLa cell extract cytoplasmic fraction

Lanes 5-8 : HeLa cell extract nuclear fraction

Lysates/proteins at 30 µg per lane.

Secondary

All lanes : IRDye800™ secondary antibody at 1/10000 dilution

Predicted band size: 37 kDa

Observed band size: 36 kDa

Please note: All products are "FOR RESEARCH USE ONLY. NOT FOR USE IN DIAGNOSTIC PROCEDURES"

Our Abpromise to you: Quality guaranteed and expert technical support

- Replacement or refund for products not performing as stated on the datasheet
- Valid for 12 months from date of delivery
- Response to your inquiry within 24 hours
- We provide support in Chinese, English, French, German, Japanese and Spanish
- Extensive multi-media technical resources to help you
- We investigate all quality concerns to ensure our products perform to the highest standards

If the product does not perform as described on this datasheet, we will offer a refund or replacement. For full details of the Abpromise, please visit <https://www.abcam.com/abpromise> or contact our technical team.

Terms and conditions

- Guarantee only valid for products bought direct from Abcam or one of our authorized distributors