

## Product datasheet

### Anti-LAG-3 antibody [11E3] ab40465

★★★★★ [2 Abreviews](#) [8 References](#) [1 Image](#)

#### Overview

<b>Product name</b>	Anti-LAG-3 antibody [11E3]
<b>Description</b>	Mouse monoclonal [11E3] to LAG-3
<b>Host species</b>	Mouse
<b>Specificity</b>	Recognizes the first N-terminal D1 domain of LAG-3.
<b>Tested applications</b>	<b>Suitable for:</b> ELISA, IP, IHC-Fr, ICC/IF, Flow Cyt, Blocking, IHC-P, WB
<b>Species reactivity</b>	<b>Reacts with:</b> Human, Monkey
<b>Immunogen</b>	Recombinant full length protein corresponding to Human LAG-3. (soluble form)
<b>General notes</b>	<p>The Life Science industry has been in the grips of a reproducibility crisis for a number of years. Abcam is leading the way in addressing this with our range of recombinant monoclonal antibodies and knockout edited cell lines for gold-standard validation. Please check that this product meets your needs before purchasing.</p> <p>If you have any questions, special requirements or concerns, please send us an inquiry and/or contact our Support team ahead of purchase. Recommended alternatives for this product can be found below, along with publications, customer reviews and Q&amp;As</p>

#### Properties

<b>Form</b>	Liquid
<b>Storage instructions</b>	Shipped at 4°C. Store at +4°C short term (1-2 weeks). Upon delivery aliquot. Store at -20°C or -80°C. Avoid freeze / thaw cycle.
<b>Storage buffer</b>	Preservative: 0.02% Sodium azide Constituents: PBS, 10% Glycerol (glycerin, glycerine)
<b>Purity</b>	Protein A purified
<b>Purification notes</b>	Purified from concentrated hybridoma tissue culture supernatant by Protein A Sepharose CL-4B Flow Fast Column. Purity >95% (SDS-PAGE).
<b>Clonality</b>	Monoclonal
<b>Clone number</b>	11E3
<b>Isotype</b>	IgG1

## Applications

### The Abpromise guarantee

Our **Abpromise guarantee** covers the use of ab40465 in the following tested applications.

The application notes include recommended starting dilutions; optimal dilutions/concentrations should be determined by the end user.

Application	Abreviews	Notes
ELISA		Use at an assay dependent concentration.
IP		Use at an assay dependent concentration.
IHC-Fr		Use at an assay dependent concentration.
ICC/IF		Use at an assay dependent concentration.
Flow Cyt		Use 1µg for 10 <sup>6</sup> cells.
Blocking		Use at an assay dependent concentration.
IHC-P	★★★★★ (2)	Use at an assay dependent concentration.
WB		Use at an assay dependent concentration.

## Target

### Function

Involved in lymphocyte activation. Binds to HLA class-II antigens.

### Tissue specificity

On cell surface of activated NK and T-lymphocytes.

### Sequence similarities

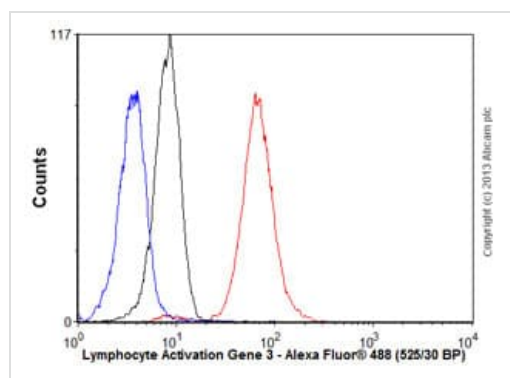
Contains 3 Ig-like C2-type (immunoglobulin-like) domains.

Contains 1 Ig-like V-type (immunoglobulin-like) domain.

### Cellular localization

Membrane.

## Images



Flow Cytometry - Anti-LAG-3 antibody [11E3]  
(ab40465)

Overlay histogram showing Jurkat cells stained with ab40465 (red line). The cells were fixed with 80% methanol (5 min) and then permeabilized with 0.1% PBS-Tween for 20 min. The cells were then incubated in 1x PBS / 10% normal goat serum / 0.3M glycine to block non-specific protein-protein interactions followed by the antibody (ab40465, 1µg/1x10<sup>6</sup> cells) for 30 min at 22°C. The secondary antibody used was Alexa Fluor® 488 goat anti-mouse IgG (H&L) ([ab150113](#)) at 1/2000 dilution for 30 min at 22°C. Isotype control antibody (black line) was mouse IgG1 [ICIGG1] ([ab91353](#), 1µg/1x10<sup>6</sup> cells) used under the same conditions. Unlabelled sample (blue line) was also used as a control. Acquisition of >5,000 events were collected using a 20mW Argon ion laser (488nm) and 525/30 bandpass filter.

**Please note:** All products are "FOR RESEARCH USE ONLY. NOT FOR USE IN DIAGNOSTIC PROCEDURES"

### **Our Abpromise to you: Quality guaranteed and expert technical support**

---

- Replacement or refund for products not performing as stated on the datasheet
- Valid for 12 months from date of delivery
- Response to your inquiry within 24 hours
- We provide support in Chinese, English, French, German, Japanese and Spanish
- Extensive multi-media technical resources to help you
- We investigate all quality concerns to ensure our products perform to the highest standards

If the product does not perform as described on this datasheet, we will offer a refund or replacement. For full details of the Abpromise, please visit <https://www.abcam.com/abpromise> or contact our technical team.

### **Terms and conditions**

---

- Guarantee only valid for products bought direct from Abcam or one of our authorized distributors