

## Product datasheet

# Anti-Lamin B2 antibody ab155319

[2 References](#) [3 Images](#)

### Overview

---

<b>Product name</b>	Anti-Lamin B2 antibody
<b>Description</b>	Rabbit polyclonal to Lamin B2
<b>Host species</b>	Rabbit
<b>Tested applications</b>	<b>Suitable for:</b> WB, IHC-P, ICC/IF
<b>Species reactivity</b>	<b>Reacts with:</b> Human
<b>Immunogen</b>	Recombinant protein fragment contain a sequence corresponding to a region within amino acids 277 - 560 of Human Lamin B2.
<b>Positive control</b>	U87-MG cell lysate; HeLa cells; Human OVCA tissue.
<b>General notes</b>	<p>The Life Science industry has been in the grips of a reproducibility crisis for a number of years. Abcam is leading the way in addressing this with our range of recombinant monoclonal antibodies and knockout edited cell lines for gold-standard validation. Please check that this product meets your needs before purchasing.</p> <p>If you have any questions, special requirements or concerns, please send us an inquiry and/or contact our Support team ahead of purchase. Recommended alternatives for this product can be found below, along with publications, customer reviews and Q&amp;As</p>

### Properties

---

<b>Form</b>	Liquid
<b>Storage instructions</b>	Shipped at 4°C. Upon delivery aliquot. Store at -20°C or -80°C. Avoid freeze / thaw cycle.
<b>Storage buffer</b>	pH: 7.00 Preservative: 0.01% Thimerosal (merthiolate) Constituents: 78.99% PBS, 1% BSA, 20% Glycerol (glycerin, glycerine)
<b>Purity</b>	Immunogen affinity purified
<b>Clonality</b>	Polyclonal
<b>Isotype</b>	IgG

### Applications

---

**The Abpromise guarantee** Our **Abpromise guarantee** covers the use of ab155319 in the following tested applications.

The application notes include recommended starting dilutions; optimal dilutions/concentrations should be determined by the end user.

Application	Abreviews	Notes
WB		1/5000 - 1/20000. Predicted molecular weight: 68 kDa.
IHC-P		1/100 - 1/1000.
ICC/IF		1/100 - 1/1000.

## Target

### Function

Lamins are components of the nuclear lamina, a fibrous layer on the nucleoplasmic side of the inner nuclear membrane, which is thought to provide a framework for the nuclear envelope and may also interact with chromatin.

### Involvement in disease

Defects in LMNB2 are a cause of partial acquired lipodystrophy (APLD) [MIM:608709]. A rare childhood disease characterized by loss of subcutaneous fat from the face and trunk. Fat deposition on the pelvic girdle and lower limbs is normal or excessive. Most frequently, onset between 5 and 15 years of age. Most affected subjects are females and some show no other abnormality, but many develop glomerulonephritis, diabetes mellitus, hyperlipidemia, and complement deficiency. Mental retardation in some cases. APLD is a sporadic disorder of unknown etiology.

### Sequence similarities

Belongs to the intermediate filament family.

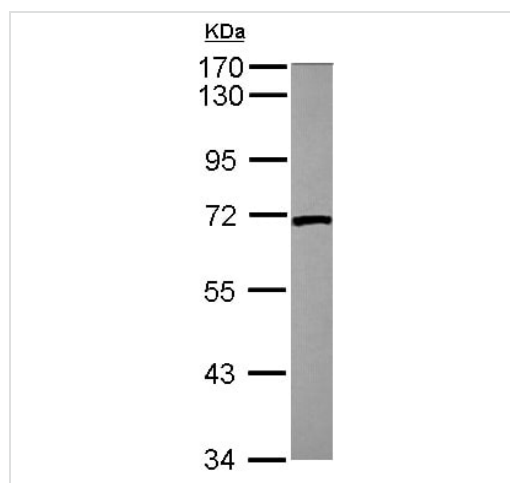
### Post-translational modifications

B-type lamins undergo a series of modifications, such as farnesylation and phosphorylation. Increased phosphorylation of the lamins occurs before envelope disintegration and probably plays a role in regulating lamin associations.

### Cellular localization

Nucleus inner membrane.

## Images

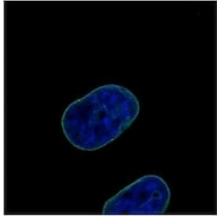
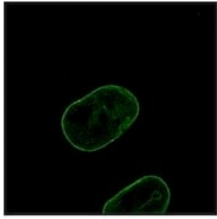


Anti-Lamin B2 antibody (ab155319) at 1/10000 dilution + U87-MG cell lysate at 30 µg

**Predicted band size: 68 kDa**

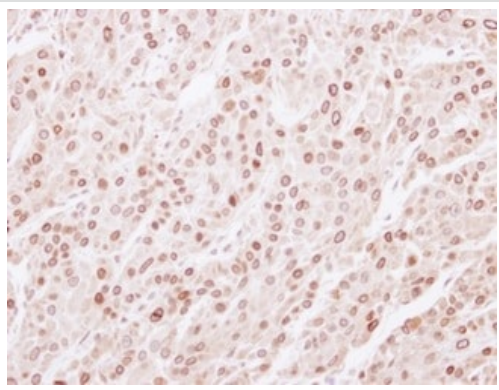
7.5% SDS PAGE

Western blot - Anti-Lamin B2 antibody (ab155319)



Immunocytochemistry/ Immunofluorescence - Anti-Lamin B2 antibody (ab155319)

Immunofluorescence of paraformaldehyde-fixed HeLa cells labeling Lamin B2 using ab155319 at 1/500 dilution (green). Bottom image shows costaining with DNA probe.



Immunohistochemistry (Formalin/PFA-fixed paraffin-embedded sections) - Anti-Lamin B2 antibody (ab155319)

Immunohistochemical analysis of formalin-fixed, paraffin-embedded Human Ovarian carcinoma tissue labeling Lamin B with ab155319 at 1/250 dilution.

**Please note:** All products are "FOR RESEARCH USE ONLY. NOT FOR USE IN DIAGNOSTIC PROCEDURES"

### **Our Abpromise to you: Quality guaranteed and expert technical support**

---

- Replacement or refund for products not performing as stated on the datasheet
- Valid for 12 months from date of delivery
- Response to your inquiry within 24 hours
- We provide support in Chinese, English, French, German, Japanese and Spanish
- Extensive multi-media technical resources to help you
- We investigate all quality concerns to ensure our products perform to the highest standards

If the product does not perform as described on this datasheet, we will offer a refund or replacement. For full details of the Abpromise, please visit <https://www.abcam.com/abpromise> or contact our technical team.

## Terms and conditions

---

- Guarantee only valid for products bought direct from Abcam or one of our authorized distributors