


Product datasheet

Anti-Laminin 2 alpha antibody [4H8-2] ab11576

★★★★★ [7 Abreviews](#) [61 References](#) [3 Images](#)

Overview

Product name	Anti-Laminin 2 alpha antibody [4H8-2]
Description	Rat monoclonal [4H8-2] to Laminin 2 alpha
Host species	Rat
Tested applications	Suitable for: IHC-Fr
Species reactivity	Reacts with: Mouse Predicted to work with: Human 
Immunogen	Full length protein corresponding to Mouse Laminin 2 alpha. Heart Laminin 2 (Mouse).
Epitope	The epitope recognized by the antibody resides in the N-terminal portion of the alpha 2 chain of laminin.
Positive control	IHC-Fr: Mouse tongue tissue.
General notes	<p>Storage in frost-free freezers is not recommended. If slight turbidity occurs upon prolonged storage, clarify the solution by centrifugation before use. Working dilution samples should be discarded if not used within 12 hours.</p> <p>The Life Science industry has been in the grips of a reproducibility crisis for a number of years. Abcam is leading the way in addressing this with our range of recombinant monoclonal antibodies and knockout edited cell lines for gold-standard validation. Please check that this product meets your needs before purchasing.</p> <p>If you have any questions, special requirements or concerns, please send us an inquiry and/or contact our Support team ahead of purchase. Recommended alternatives for this product can be found below, along with publications, customer reviews and Q&As</p>

Properties

Form	Liquid
Storage instructions	Shipped at 4°C. Upon delivery aliquot and store at -20°C or -80°C. Avoid repeated freeze / thaw cycles.
Storage buffer	pH: 7.40 Preservative: 0.097% Sodium azide Constituent: 0.0268% PBS
Purity	Protein A purified
Clonality	Monoclonal

Clone number	4H8-2
Isotype	IgG1

Applications

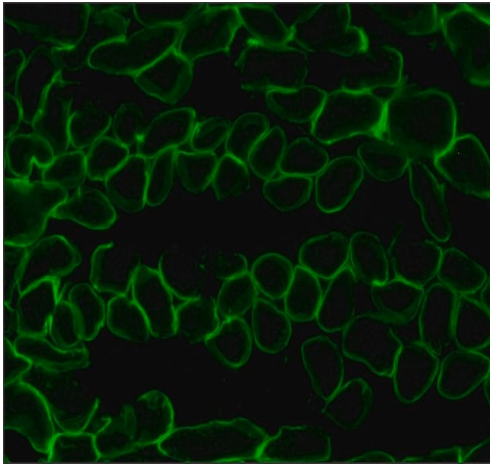
The Abpromise guarantee Our **Abpromise guarantee** covers the use of ab11576 in the following tested applications. The application notes include recommended starting dilutions; optimal dilutions/concentrations should be determined by the end user.

Application	Abreviews	Notes
IHC-Fr	★★★★★ (5)	Use a concentration of 4 - 8 µg/ml. This concentration was determined for acetone-fixed frozen sections of human tongue.

Target

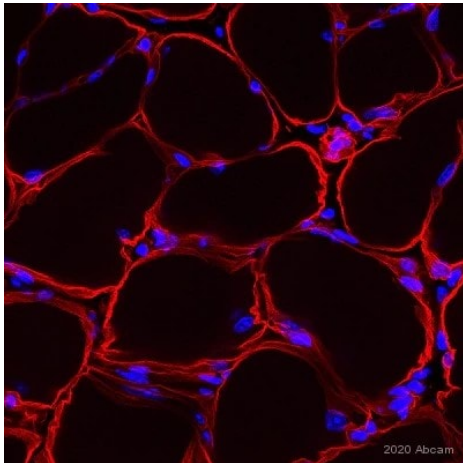
Function	Binding to cells via a high affinity receptor, laminin is thought to mediate the attachment, migration and organization of cells into tissues during embryonic development by interacting with other extracellular matrix components.
Tissue specificity	Placenta, striated muscle, peripheral nerve, cardiac muscle, pancreas, lung, spleen, kidney, adrenal gland, skin, testis, meninges, choroid plexus, and some other regions of the brain; not in liver, thymus and bone.
Involvement in disease	Defects in LAMA2 are the cause of merosin-deficient congenital muscular dystrophy type 1A (MDC1A) [MIM:607855]. MDC1A is characterized by difficulty walking, hypotonia, proximal weakness, hyporeflexia, and white matter hypodensity on MRI.
Sequence similarities	Contains 17 laminin EGF-like domains. Contains 5 laminin G-like domains. Contains 2 laminin IV type A domains. Contains 1 laminin N-terminal domain.
Domain	The alpha-helical domains I and II are thought to interact with other laminin chains to form a coiled coil structure. Domains VI, IV and G are globular.
Cellular localization	Secreted > extracellular space > extracellular matrix > basement membrane. Major component.

Images



Immunohistochemistry (Frozen sections) - Anti-Laminin 2 alpha antibody [4H8-2] (ab11576)

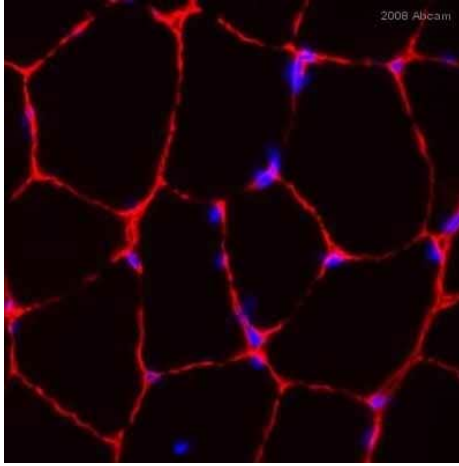
Immunohistochemical analysis of acetone-fixed frozen section of mouse tongue tissue labeling Laminin 2 alpha using ab11576 at 8 µg/mL, followed by a monoclonal Anti-Rat Kappa & Lamda light chains-FITC conjugate at 1/40 dilution (Green).



Immunohistochemistry (Frozen sections) - Anti-Laminin 2 alpha antibody [4H8-2] (ab11576)

This image is courtesy of an anonymous Abreview.

Immunohistochemistry (Frozen sections) analysis of Mouse muscle tissue labeling Laminin 2 alpha with ab11576 at 1/200 dilution. Tissue fixed with paraformaldehyde and permeabilized with 0.3% Triton X-100 in PBS for 30 minutes. Tissue blocked with 10% goat serum for 1 hour at room temperature followed by incubation with the primary antibody in 2% goat serum, 0.2% triton X-100 in PBS overnight at 4°C. Goat anti-rat IgG (Alexa Fluor® 568) was used as the secondary antibody at 1/500 dilution (red).



Immunohistochemistry (Frozen sections) - Anti-Laminin 2 alpha antibody [4H8-2] (ab11576)

This image is courtesy of an Abreview submitted by Dr Ling Guo

ab11576 staining C57B6 mouse skeletal muscle cryostat tissue sections by IHC-Fr. The section was acetone fixed and blocked with 5% BSA for 30 minutes at RT, prior to incubation with the primary antibody (diluted 1/200 in blocking buffer) for 2 hours. A rhodamine-conjugated goat anti-rat antibody was used as the secondary.

Please note: All products are "FOR RESEARCH USE ONLY. NOT FOR USE IN DIAGNOSTIC PROCEDURES"

Our Abpromise to you: Quality guaranteed and expert technical support

- Replacement or refund for products not performing as stated on the datasheet
- Valid for 12 months from date of delivery
- Response to your inquiry within 24 hours
- We provide support in Chinese, English, French, German, Japanese and Spanish
- Extensive multi-media technical resources to help you
- We investigate all quality concerns to ensure our products perform to the highest standards

If the product does not perform as described on this datasheet, we will offer a refund or replacement. For full details of the Abpromise, please visit <https://www.abcam.com/abpromise> or contact our technical team.

Terms and conditions

- Guarantee only valid for products bought direct from Abcam or one of our authorized distributors