

## Product datasheet

# Anti-Laminin alpha 4/LAMA4 antibody [CL3183] ab242198

★ ★ ★ ★ ★ [1 Abreviews](#) [2 References](#) [14 Images](#)

### Overview

---

<b>Product name</b>	Anti-Laminin alpha 4/LAMA4 antibody [CL3183]
<b>Description</b>	Mouse monoclonal [CL3183] to Laminin alpha 4/LAMA4
<b>Host species</b>	Mouse
<b>Tested applications</b>	<b>Suitable for:</b> WB, IHC-P
<b>Species reactivity</b>	<b>Reacts with:</b> Mouse, Rat, Human
<b>Immunogen</b>	Recombinant fragment corresponding to Human Laminin alpha 4/LAMA4 aa 650-850. Database link: <a href="#">Q16363</a> <a href="#">Run BLAST with</a> <a href="#">Run BLAST with</a>
<b>Epitope</b>	Binds to an epitope located within the peptide sequence MANNLTNWSQNLQHF as determined by overlapping synthetic peptides.
<b>Positive control</b>	WB: Human placenta lysate. Lam-411 and Lam-421 purified recombinant human proteins. IHC-P: Human colon, pancreas, placenta and prostate tissue. Rat heart muscle, kidney, epididymis, rectum and stomach tissue. Mouse epididymis and stomach tissue.
<b>General notes</b>	<p>The Life Science industry has been in the grips of a reproducibility crisis for a number of years. Abcam is leading the way in addressing this with our range of recombinant monoclonal antibodies and knockout edited cell lines for gold-standard validation. Please check that this product meets your needs before purchasing.</p> <p>If you have any questions, special requirements or concerns, please send us an inquiry and/or contact our Support team ahead of purchase. Recommended alternatives for this product can be found below, along with publications, customer reviews and Q&amp;As</p>

### Properties

---

<b>Form</b>	Liquid
<b>Storage instructions</b>	Shipped at 4°C. Store at +4°C short term (1-2 weeks). Upon delivery aliquot. Store at -20°C long term. Avoid freeze / thaw cycle.
<b>Storage buffer</b>	pH: 7.20 Preservative: 0.02% Sodium azide Constituents: 40% Glycerol (glycerin, glycerine), PBS
<b>Purity</b>	Protein A purified

<b>Purification notes</b>	Purified from TCS.
<b>Clonality</b>	Monoclonal
<b>Clone number</b>	CL3183
<b>Isotype</b>	IgG2b

## Applications

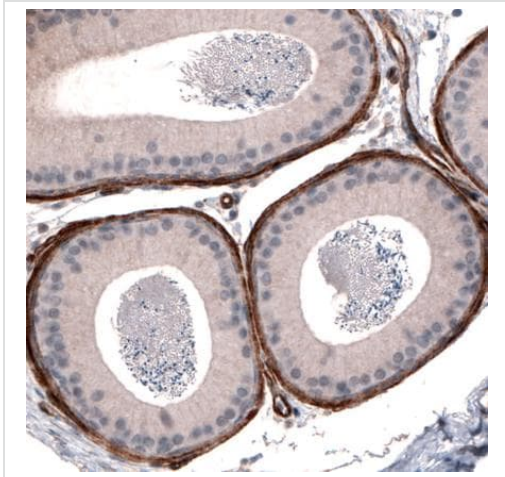
**The Abpromise guarantee** Our **Abpromise guarantee** covers the use of ab242198 in the following tested applications. The application notes include recommended starting dilutions; optimal dilutions/concentrations should be determined by the end user.

Application	Abreviews	Notes
<b>WB</b>		Use a concentration of 1 µg/ml. Predicted molecular weight: 202 kDa.
<b>IHC-P</b>	★ ★ ★ ★ ★ (1)	1/200 - 1/500. Perform heat mediated antigen retrieval with citrate buffer pH 6 before commencing with IHC staining protocol.

## Target

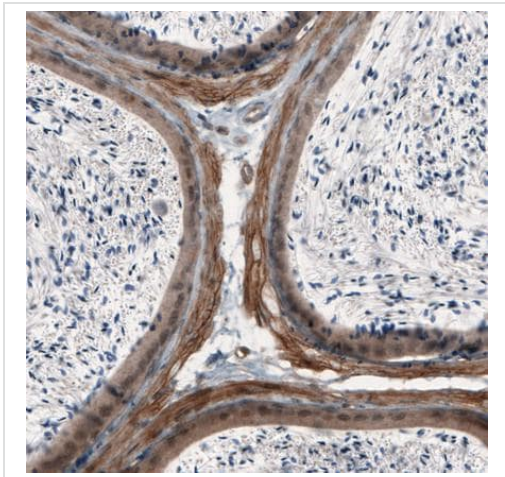
<b>Function</b>	Binding to cells via a high affinity receptor, laminin is thought to mediate the attachment, migration and organization of cells into tissues during embryonic development by interacting with other extracellular matrix components.
<b>Tissue specificity</b>	In adult, strong expression in heart, lung, ovary small and large intestines, placenta, liver; weak or no expression in skeletal muscle, kidney, pancreas, testis, prostate, brain. High expression in fetal lung and kidney. Expression in fetal and newborn tissues is observed in certain mesenchymal cells in tissues such as smooth muscle and dermis.
<b>Involvement in disease</b>	Cardiomyopathy, dilated 1JJ
<b>Sequence similarities</b>	Contains 4 laminin EGF-like domains. Contains 5 laminin G-like domains.
<b>Domain</b>	The alpha-helical domains I and II are thought to interact with other laminin chains to form a coiled coil structure. Domain G is globular.
<b>Cellular localization</b>	Secreted, extracellular space, extracellular matrix, basement membrane. Major component.

## Images



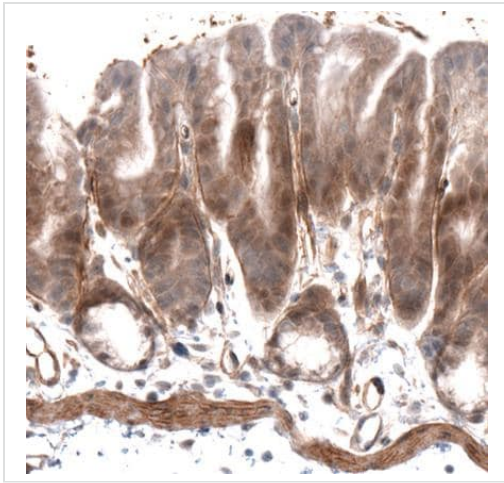
Immunohistochemistry (Formalin/PFA-fixed paraffin-embedded sections) - Anti-Laminin alpha 4/LAMA4 antibody [CL3183] (ab242198)

Formalin-fixed, paraffin-embedded rat epididymis tissue stained for Laminin alpha 4/LAMA4 with ab242198 at a 1:200 dilution in immunohistochemical analysis.



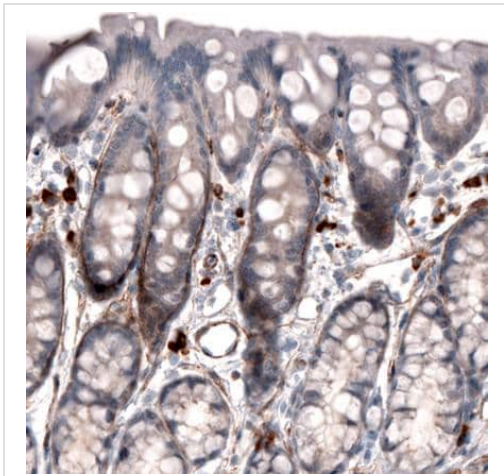
Immunohistochemistry (Formalin/PFA-fixed paraffin-embedded sections) - Anti-Laminin alpha 4/LAMA4 antibody [CL3183] (ab242198)

Formalin-fixed, paraffin-embedded mouse epididymis tissue stained for Laminin alpha 4/LAMA4 with ab242198 at a 1:200 dilution in immunohistochemical analysis.



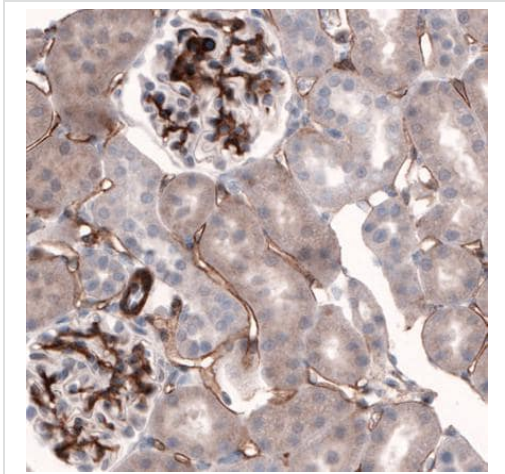
Formalin-fixed, paraffin-embedded mouse stomach tissue stained for Laminin alpha 4/LAMA4 with ab242198 at a 1:200 dilution in immunohistochemical analysis.

Immunohistochemistry (Formalin/PFA-fixed paraffin-embedded sections) - Anti-Laminin alpha 4/LAMA4 antibody [CL3183] (ab242198)



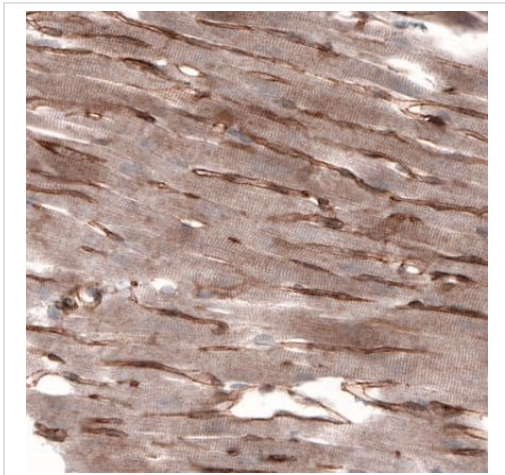
Formalin-fixed, paraffin-embedded rat rectum tissue stained for Laminin alpha 4/LAMA4 with ab242198 at a 1:200 dilution in immunohistochemical analysis.

Immunohistochemistry (Formalin/PFA-fixed paraffin-embedded sections) - Anti-Laminin alpha 4/LAMA4 antibody [CL3183] (ab242198)



Formalin-fixed, paraffin-embedded rat kidney tissue stained for Laminin alpha 4/LAMA4 with ab242198 at a 1:200 dilution in immunohistochemical analysis.

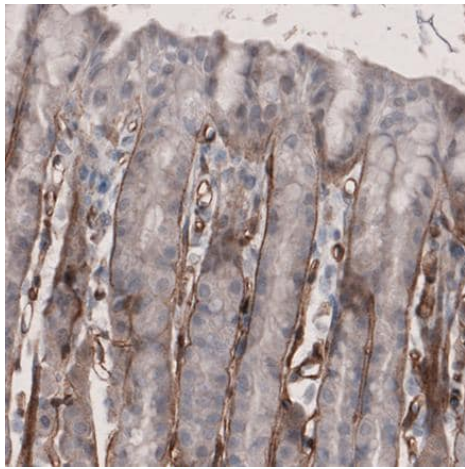
Immunohistochemistry (Formalin/PFA-fixed paraffin-embedded sections) - Anti-Laminin alpha 4/LAMA4 antibody [CL3183] (ab242198)



Formalin-fixed, paraffin-embedded rat heart muscle tissue stained for Laminin alpha 4/LAMA4 with ab242198 at a 1:200 dilution in immunohistochemical analysis.

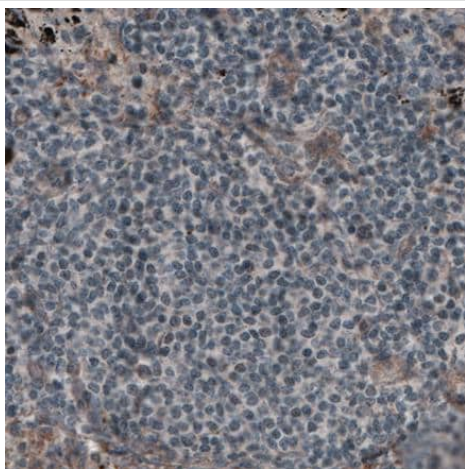
Immunohistochemistry (Formalin/PFA-fixed paraffin-embedded sections) - Anti-Laminin alpha 4/LAMA4 antibody [CL3183] (ab242198)





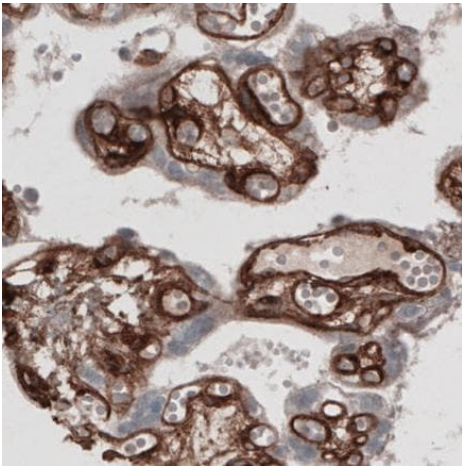
Immunohistochemistry (Formalin/PFA-fixed paraffin-embedded sections) - Anti-Laminin alpha 4/LAMA4 antibody [CL3183] (ab242198)

Formalin-fixed, paraffin-embedded rat stomach tissue stained for Laminin alpha 4/LAMA4 with ab242198 at a 1:200 dilution in immunohistochemical analysis.



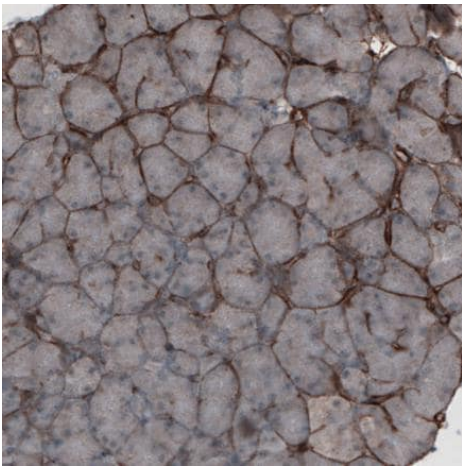
Immunohistochemistry (Formalin/PFA-fixed paraffin-embedded sections) - Anti-Laminin alpha 4/LAMA4 antibody [CL3183] (ab242198)

**Negative control** - Formalin-fixed, paraffin-embedded human lymph node tissue stained for Laminin alpha 4/LAMA4 with ab242198 at a 1:200 dilution in immunohistochemical analysis.



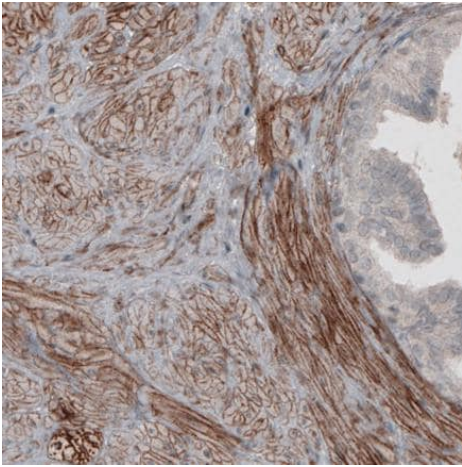
Immunohistochemistry (Formalin/PFA-fixed paraffin-embedded sections) - Anti-Laminin alpha 4/LAMA4 antibody [CL3183] (ab242198)

Formalin-fixed, paraffin-embedded human placenta tissue stained for Laminin alpha 4/LAMA4 with ab242198 at a 1:200 dilution in immunohistochemical analysis.



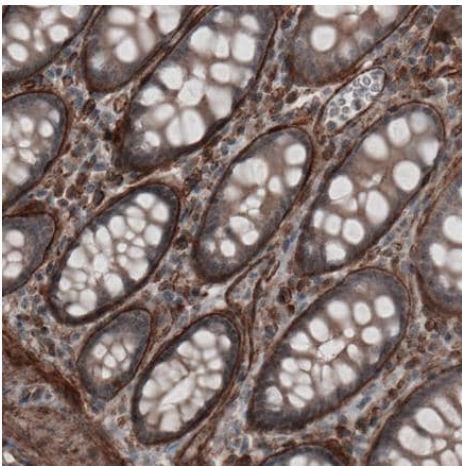
Immunohistochemistry (Formalin/PFA-fixed paraffin-embedded sections) - Anti-Laminin alpha 4/LAMA4 antibody [CL3183] (ab242198)

Formalin-fixed, paraffin-embedded human pancreas tissue stained for Laminin alpha 4/LAMA4 with ab242198 at a 1:200 dilution in immunohistochemical analysis.



Formalin-fixed, paraffin-embedded human prostate tissue stained for Laminin alpha 4/LAMA4 with ab242198 at a 1:200 dilution in immunohistochemical analysis.

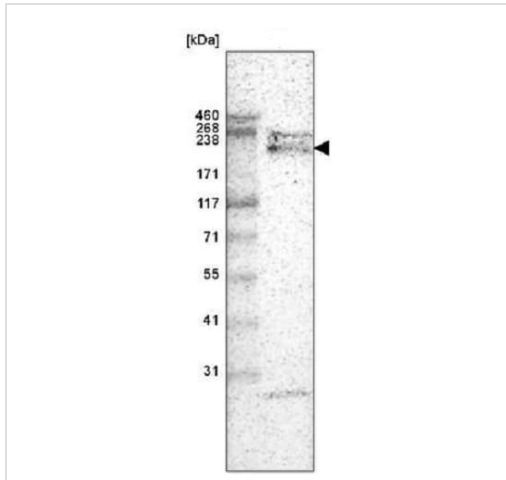
Immunohistochemistry (Formalin/PFA-fixed paraffin-embedded sections) - Anti-Laminin alpha 4/LAMA4 antibody [CL3183] (ab242198)



Formalin-fixed, paraffin-embedded human colon tissue stained for Laminin alpha 4/LAMA4 with ab242198 at a 1:200 dilution in immunohistochemical analysis.

Immunohistochemistry (Formalin/PFA-fixed paraffin-embedded sections) - Anti-Laminin alpha 4/LAMA4 antibody [CL3183] (ab242198)

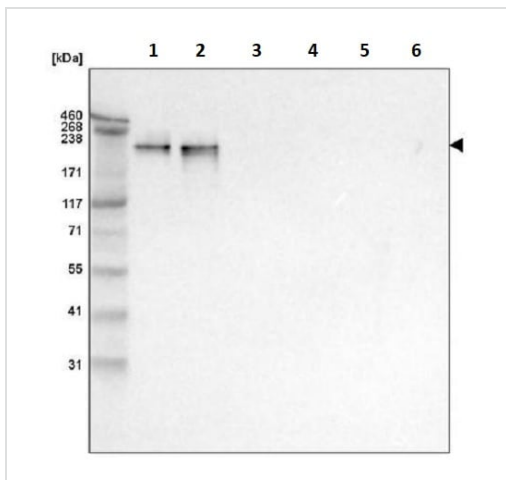




Western blot - Anti-Laminin alpha 4/LAMA4 antibody [CL3183] (ab242198)

Anti-Laminin alpha 4/LAMA4 antibody [CL3183] (ab242198) at 1  $\mu$ g/ml + Human placenta tissue lysate

**Predicted band size:** 202 kDa



Western blot - Anti-Laminin alpha 4/LAMA4 antibody [CL3183] (ab242198)

**All lanes :** Anti-Laminin alpha 4/LAMA4 antibody [CL3183] (ab242198) at 1  $\mu$ g/ml

**Lane 1 :** Recombinant human Laminin-411 protein

**Lane 2 :** Recombinant human Laminin-421 protein

**Lane 3 :** Recombinant human Laminin-511 protein

**Lane 4 :** Recombinant human Laminin-121 protein

**Lane 5 :** Recombinant human Laminin-221 protein

**Lane 6 :** Recombinant human Laminin-332 protein

**Predicted band size:** 202 kDa

**Please note:** All products are "FOR RESEARCH USE ONLY. NOT FOR USE IN DIAGNOSTIC PROCEDURES"

**Our Abpromise to you: Quality guaranteed and expert technical support**

- Replacement or refund for products not performing as stated on the datasheet
- Valid for 12 months from date of delivery
- Response to your inquiry within 24 hours

- We provide support in Chinese, English, French, German, Japanese and Spanish
- Extensive multi-media technical resources to help you
- We investigate all quality concerns to ensure our products perform to the highest standards

If the product does not perform as described on this datasheet, we will offer a refund or replacement. For full details of the Abpromise, please visit <https://www.abcam.com/abpromise> or contact our technical team.

### **Terms and conditions**

---

- Guarantee only valid for products bought direct from Abcam or one of our authorized distributors