

Product datasheet

Anti-Laminin alpha 4/LAMA4 antibody [CL3185] ab242359

[1 References](#) [8 Images](#)

Overview

Product name	Anti-Laminin alpha 4/LAMA4 antibody [CL3185]
Description	Mouse monoclonal [CL3185] to Laminin alpha 4/LAMA4
Host species	Mouse
Tested applications	Suitable for: WB, IHC-P
Species reactivity	Reacts with: Mouse, Human, Recombinant fragment
Immunogen	Recombinant fragment corresponding to Human Laminin alpha 4/LAMA4 aa 650-850. Database link: Q16363 Run BLAST with Run BLAST with
Epitope	Binds to an epitope located within the peptide sequence GALARKSALKTRLSD as determined by overlapping synthetic peptides.
Positive control	WB: Recombinant human Laminin-411 and Laminin-421 proteins. IHC-P: Human rectum, placenta and prostate tissue; mouse heart muscle, stomach and epididymis tissue.
General notes	<p>The Life Science industry has been in the grips of a reproducibility crisis for a number of years. Abcam is leading the way in addressing this with our range of recombinant monoclonal antibodies and knockout edited cell lines for gold-standard validation. Please check that this product meets your needs before purchasing.</p> <p>If you have any questions, special requirements or concerns, please send us an inquiry and/or contact our Support team ahead of purchase. Recommended alternatives for this product can be found below, along with publications, customer reviews and Q&As</p>

Properties

Form	Liquid
Storage instructions	Shipped at 4°C. Store at +4°C short term (1-2 weeks). Upon delivery aliquot. Store at -20°C long term. Avoid freeze / thaw cycle.
Storage buffer	pH: 7.20 Preservative: 0.02% Sodium azide Constituents: 40% Glycerol (glycerin, glycerine), PBS
Purity	Protein A purified

Clonality	Monoclonal
Clone number	CL3185
Isotype	IgG1

Applications

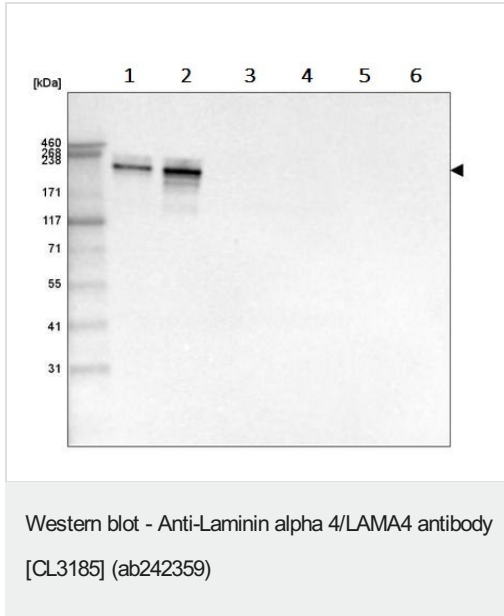
The Abpromise guarantee Our **Abpromise guarantee** covers the use of ab242359 in the following tested applications. The application notes include recommended starting dilutions; optimal dilutions/concentrations should be determined by the end user.

Application	Abreviews	Notes
WB		Use a concentration of 1 µg/ml. Predicted molecular weight: 203 kDa.
IHC-P		1/500 - 1/1000. Perform heat mediated antigen retrieval with citrate buffer pH 6 before commencing with IHC staining protocol.

Target

Function	Binding to cells via a high affinity receptor, laminin is thought to mediate the attachment, migration and organization of cells into tissues during embryonic development by interacting with other extracellular matrix components.
Tissue specificity	In adult, strong expression in heart, lung, ovary small and large intestines, placenta, liver; weak or no expression in skeletal muscle, kidney, pancreas, testis, prostate, brain. High expression in fetal lung and kidney. Expression in fetal and newborn tissues is observed in certain mesenchymal cells in tissues such as smooth muscle and dermis.
Involvement in disease	Cardiomyopathy, dilated 1JJ
Sequence similarities	Contains 4 laminin EGF-like domains. Contains 5 laminin G-like domains.
Domain	The alpha-helical domains I and II are thought to interact with other laminin chains to form a coiled coil structure. Domain G is globular.
Cellular localization	Secreted, extracellular space, extracellular matrix, basement membrane. Major component.

Images



All lanes : Anti-Laminin alpha 4/LAMA4 antibody [CL3185] (ab242359) at 1 µg/ml

Lane 1 : Recombinant humanan Laminin-411 protein

Lane 2 : Recombinant human Laminin-421 protein

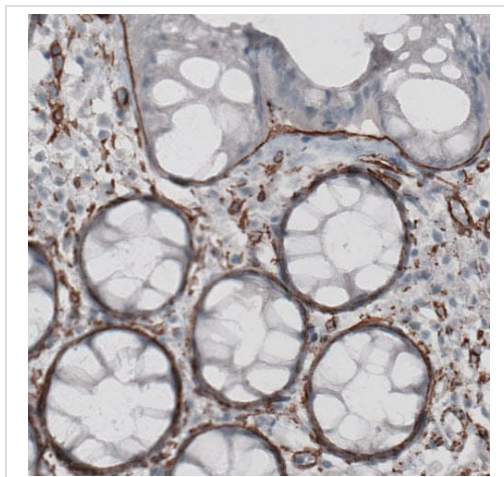
Lane 3 : Recombinant human Laminin-511 protein

Lane 4 : Recombinant human Laminin-121 protein

Lane 5 : Recombinant human Laminin-221 protein

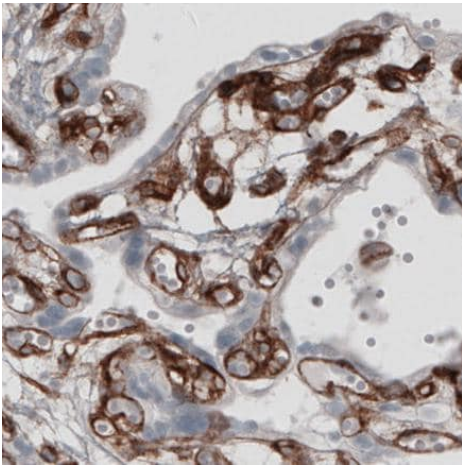
Lane 6 : Recombinant human Laminin-332 protein

Predicted band size: 203 kDa



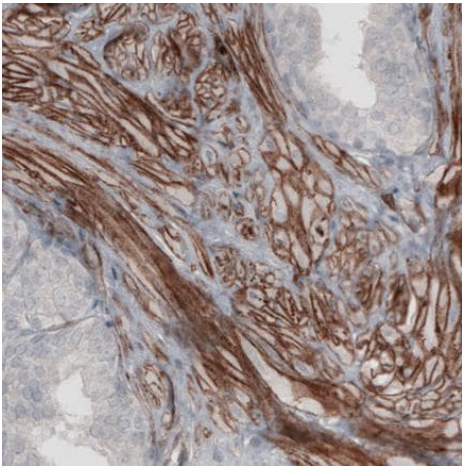
Paraffin-embedded human rectum tissue stained for Laminin alpha 4/LAMA4 with ab242359 at 1/500 dilution in immunohistochemical analysis.

Immunohistochemistry (Formalin/PFA-fixed paraffin-embedded sections) - Anti-Laminin alpha 4/LAMA4 antibody [CL3185] (ab242359)



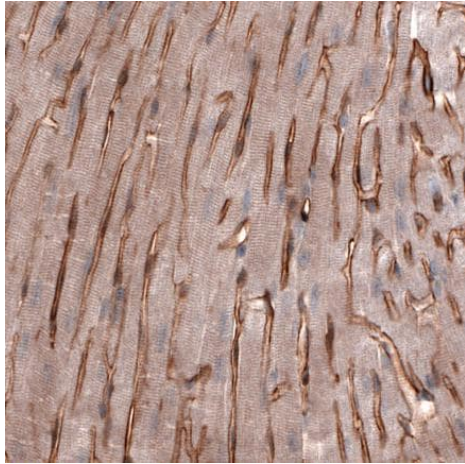
Paraffin-embedded human placenta tissue stained for Laminin alpha 4/LAMA4 with ab242359 at 1/500 dilution in immunohistochemical analysis.

Immunohistochemistry (Formalin/PFA-fixed paraffin-embedded sections) - Anti-Laminin alpha 4/LAMA4 antibody [CL3185] (ab242359)



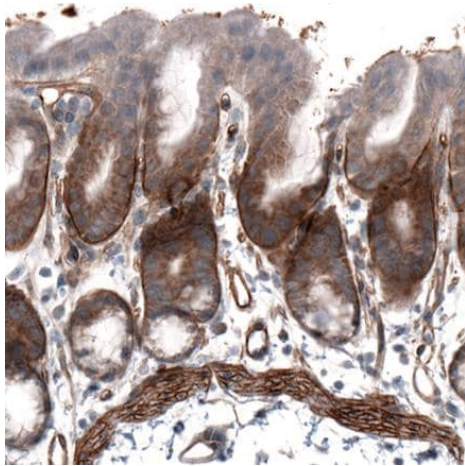
Paraffin-embedded human prostate tissue stained for Laminin alpha 4/LAMA4 with ab242359 at 1/500 dilution in immunohistochemical analysis.

Immunohistochemistry (Formalin/PFA-fixed paraffin-embedded sections) - Anti-Laminin alpha 4/LAMA4 antibody [CL3185] (ab242359)



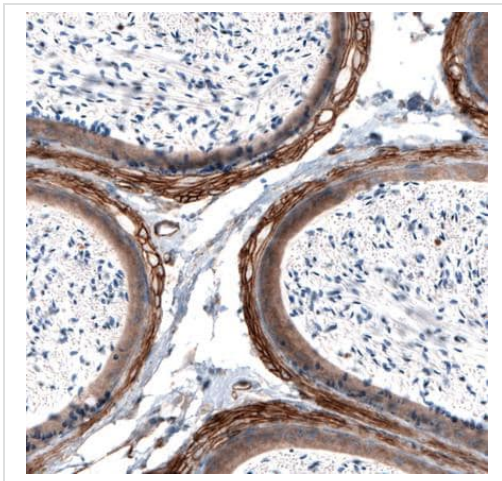
Paraffin-embedded mouse heart muscle tissue stained for Laminin alpha 4/LAMA4 with ab242359 at 1/500 dilution in immunohistochemical analysis.

Immunohistochemistry (Formalin/PFA-fixed paraffin-embedded sections) - Anti-Laminin alpha 4/LAMA4 antibody [CL3185] (ab242359)



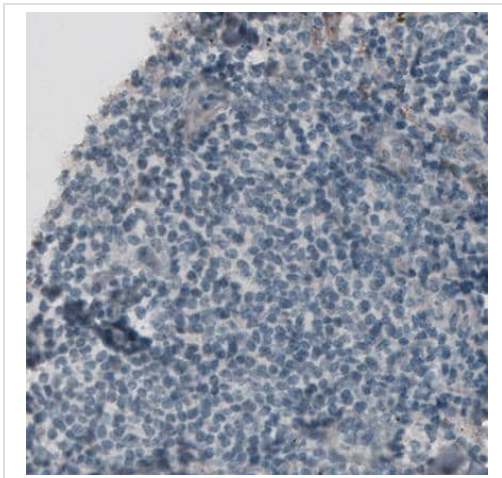
Paraffin-embedded mouse stomach tissue stained for Laminin alpha 4/LAMA4 with ab242359 at 1/500 dilution in immunohistochemical analysis.

Immunohistochemistry (Formalin/PFA-fixed paraffin-embedded sections) - Anti-Laminin alpha 4/LAMA4 antibody [CL3185] (ab242359)



Paraffin-embedded mouse epididymis tissue stained for Laminin alpha 4/LAMA4 with ab242359 at 1/500 dilution in immunohistochemical analysis.

Immunohistochemistry (Formalin/PFA-fixed paraffin-embedded sections) - Anti-Laminin alpha 4/LAMA4 antibody [CL3185] (ab242359)



Negative control:

Paraffin-embedded human lymph node tissue stained for Laminin alpha 4/LAMA4 with ab242359 at 1/500 dilution in immunohistochemical analysis.

Immunohistochemistry (Formalin/PFA-fixed paraffin-embedded sections) - Anti-Laminin alpha 4/LAMA4 antibody [CL3185] (ab242359)

Please note: All products are "FOR RESEARCH USE ONLY. NOT FOR USE IN DIAGNOSTIC PROCEDURES"

Our Abpromise to you: Quality guaranteed and expert technical support

- Replacement or refund for products not performing as stated on the datasheet
- Valid for 12 months from date of delivery
- Response to your inquiry within 24 hours

- We provide support in Chinese, English, French, German, Japanese and Spanish
- Extensive multi-media technical resources to help you
- We investigate all quality concerns to ensure our products perform to the highest standards

If the product does not perform as described on this datasheet, we will offer a refund or replacement. For full details of the Abpromise, please visit <https://www.abcam.com/abpromise> or contact our technical team.

Terms and conditions

- Guarantee only valid for products bought direct from Abcam or one of our authorized distributors