

## Product datasheet

# Anti-Laminin alpha 5/LAMA5 antibody [4B12] ab77175

★★★★☆ [1 Abreviews](#) [9 References](#) [1 Image](#)

### Overview

---

<b>Product name</b>	Anti-Laminin alpha 5/LAMA5 antibody [4B12]
<b>Description</b>	Mouse monoclonal [4B12] to Laminin alpha 5/LAMA5
<b>Host species</b>	Mouse
<b>Tested applications</b>	<b>Suitable for:</b> ICC/IF <b>Unsuitable for:</b> WB
<b>Species reactivity</b>	<b>Reacts with:</b> Human
<b>Immunogen</b>	Full length native protein (purified) corresponding to Human Laminin alpha 5/LAMA5.
<b>Positive control</b>	Human embryonic lung (alveolar epithelium). Human kidney.
<b>General notes</b>	<p>The Life Science industry has been in the grips of a reproducibility crisis for a number of years. Abcam is leading the way in addressing this with our range of recombinant monoclonal antibodies and knockout edited cell lines for gold-standard validation. Please check that this product meets your needs before purchasing.</p> <p>If you have any questions, special requirements or concerns, please send us an inquiry and/or contact our Support team ahead of purchase. Recommended alternatives for this product can be found below, along with publications, customer reviews and Q&amp;As</p>

### Properties

---

<b>Form</b>	Liquid
<b>Storage instructions</b>	Shipped at 4°C. Upon delivery aliquot and store at -20°C or -80°C. Avoid repeated freeze / thaw cycles.
<b>Storage buffer</b>	pH: 7.40 Preservative: 0.1% Sodium azide Constituent: PBS
<b>Purity</b>	Ion Exchange Chromatography
<b>Clonality</b>	Monoclonal
<b>Clone number</b>	4B12
<b>Isotype</b>	IgG1

### Applications

## The Abpromise guarantee

Our **Abpromise guarantee** covers the use of ab77175 in the following tested applications.

The application notes include recommended starting dilutions; optimal dilutions/concentrations should be determined by the end user.

Application	Abreviews	Notes
ICC/IF	★★★★★ (1)	Use at an assay dependent concentration.

## Application notes

Is unsuitable for WB.

## Target

### Function

Binding to cells via a high affinity receptor, laminin is thought to mediate the attachment, migration and organization of cells into tissues during embryonic development by interacting with other extracellular matrix components.

### Tissue specificity

Expressed in heart, lung, kidney, skeletal muscle, pancreas, retina and placenta. Little or no expression in brain and liver.

### Sequence similarities

Contains 22 laminin EGF-like domains.  
Contains 5 laminin G-like domains.  
Contains 1 laminin IV type A domain.  
Contains 1 laminin N-terminal domain.

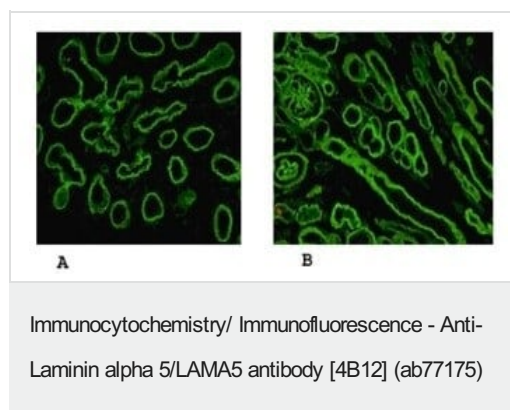
### Domain

Domain G is globular and is part of the major cell-binding site located in the long arm of the laminin heterotrimer.

### Cellular localization

Secreted, extracellular space, extracellular matrix, basement membrane. Major component.

## Images



Immunofluorescence of (A) Human embryonic lung alveolae epithelium and (B) Human kidney labelling Lamin alpha 5 with ab77175.

**Please note:** All products are "FOR RESEARCH USE ONLY. NOT FOR USE IN DIAGNOSTIC PROCEDURES"

## Our Abpromise to you: Quality guaranteed and expert technical support

- Replacement or refund for products not performing as stated on the datasheet
- Valid for 12 months from date of delivery
- Response to your inquiry within 24 hours

- We provide support in Chinese, English, French, German, Japanese and Spanish
- Extensive multi-media technical resources to help you
- We investigate all quality concerns to ensure our products perform to the highest standards

If the product does not perform as described on this datasheet, we will offer a refund or replacement. For full details of the Abpromise, please visit <https://www.abcam.com/abpromise> or contact our technical team.

### **Terms and conditions**

---

- Guarantee only valid for products bought direct from Abcam or one of our authorized distributors