

Product datasheet

Anti-Laminin alpha 5/LAMA5 antibody ab220399

★★★★☆ [1 Abreviews](#) [2 References](#) [1 Image](#)

Overview

Product name	Anti-Laminin alpha 5/LAMA5 antibody
Description	Rabbit polyclonal to Laminin alpha 5/LAMA5
Host species	Rabbit
Tested applications	Suitable for: ICC/IF
Species reactivity	Reacts with: Human
Immunogen	Recombinant fragment corresponding to Human Laminin alpha 5/LAMA5 aa 3450-3600. Database link: O15230 Run BLAST with Run BLAST with
Positive control	ICC/IF - Caco2 cells
General notes	<p>The Life Science industry has been in the grips of a reproducibility crisis for a number of years. Abcam is leading the way in addressing this with our range of recombinant monoclonal antibodies and knockout edited cell lines for gold-standard validation. Please check that this product meets your needs before purchasing.</p> <p>If you have any questions, special requirements or concerns, please send us an inquiry and/or contact our Support team ahead of purchase. Recommended alternatives for this product can be found below, along with publications, customer reviews and Q&As</p>

Properties

Form	Liquid
Storage instructions	Shipped at 4°C. Store at +4°C short term (1-2 weeks). Upon delivery aliquot. Store at -20°C long term. Avoid freeze / thaw cycle.
Storage buffer	pH: 7.20 Preservative: 0.02% Sodium azide Constituents: 59% PBS, 40% Glycerol (glycerin, glycerine)
Purity	Immunogen affinity purified
Clonality	Polyclonal
Isotype	IgG

Applications

The Abpromise guarantee

Our **Abpromise guarantee** covers the use of ab220399 in the following tested applications.

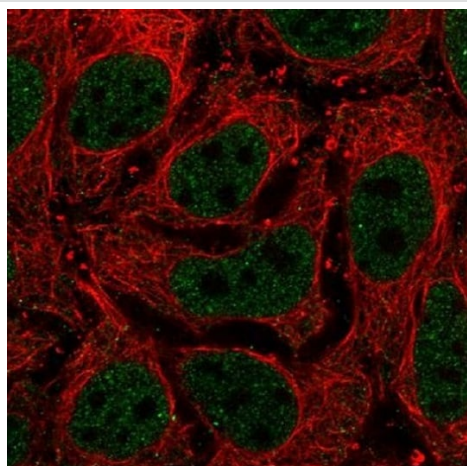
The application notes include recommended starting dilutions; optimal dilutions/concentrations should be determined by the end user.

Application	Abreviews	Notes
ICC/IF		Use a concentration of 0.25 - 2 µg/ml.

Target

Function	Binding to cells via a high affinity receptor, laminin is thought to mediate the attachment, migration and organization of cells into tissues during embryonic development by interacting with other extracellular matrix components.
Tissue specificity	Expressed in heart, lung, kidney, skeletal muscle, pancreas, retina and placenta. Little or no expression in brain and liver.
Sequence similarities	Contains 22 laminin EGF-like domains. Contains 5 laminin G-like domains. Contains 1 laminin IV type A domain. Contains 1 laminin N-terminal domain.
Domain	Domain G is globular and is part of the major cell-binding site located in the long arm of the laminin heterotrimer.
Cellular localization	Secreted, extracellular space, extracellular matrix, basement membrane. Major component.

Images



Immunofluorescent analysis of PFA fixed, Triton X-100 permeabilized Caco2 cells labeling Laminin alpha 5/LAMA5 with ab220399 at 4 µg/ml (green).

Immunocytochemistry/ Immunofluorescence - Anti-Laminin alpha 5/LAMA5 antibody (ab220399)

Please note: All products are "FOR RESEARCH USE ONLY. NOT FOR USE IN DIAGNOSTIC PROCEDURES"

Our Abpromise to you: Quality guaranteed and expert technical support

- Replacement or refund for products not performing as stated on the datasheet
- Valid for 12 months from date of delivery
- Response to your inquiry within 24 hours

- We provide support in Chinese, English, French, German, Japanese and Spanish
- Extensive multi-media technical resources to help you
- We investigate all quality concerns to ensure our products perform to the highest standards

If the product does not perform as described on this datasheet, we will offer a refund or replacement. For full details of the Abpromise, please visit <https://www.abcam.com/abpromise> or contact our technical team.

Terms and conditions

- Guarantee only valid for products bought direct from Abcam or one of our authorized distributors