



Product datasheet

Anti-Laminin alpha 5/LAMA5 antibody [CL3118] ab210957

[9 Images](#)

Overview

Product name	Anti-Laminin alpha 5/LAMA5 antibody [CL3118]
Description	Mouse monoclonal [CL3118] to Laminin alpha 5/LAMA5
Host species	Mouse
Tested applications	Suitable for: IHC-P, WB
Species reactivity	Reacts with: Human
Immunogen	Synthetic peptide within Human Laminin alpha 5/LAMA5 aa 2550-2650. The exact immunogen sequence used to generate this antibody is proprietary information. If additional detail on the immunogen is needed to determine the suitability of the antibody for your needs, please contact our Scientific Support team to discuss your requirements. Database link: O15230
Epitope	ab210957 binds to an epitope located within the peptide sequence RQGLVDRAQQ (aa 2555 - 2564). <div>  Run BLAST with  Run BLAST with </div>
Positive control	Recombinant protein fragment of human Laminin alpha 5/LAMA5; human placenta tissue lysate; human kidney, colon, heart, placenta, stomach, fallopian tube, and cervix tissues.
General notes	<p>The Life Science industry has been in the grips of a reproducibility crisis for a number of years. Abcam is leading the way in addressing this with our range of recombinant monoclonal antibodies and knockout edited cell lines for gold-standard validation. Please check that this product meets your needs before purchasing.</p> <p>If you have any questions, special requirements or concerns, please send us an inquiry and/or contact our Support team ahead of purchase. Recommended alternatives for this product can be found below, along with publications, customer reviews and Q&As</p>

Properties

Form	Liquid
Storage instructions	Shipped at 4°C. Store at +4°C short term (1-2 weeks). Upon delivery aliquot. Store at -20°C long term. Avoid freeze / thaw cycle.
Storage buffer	pH: 7.20 Preservative: 0.02% Sodium azide

	Constituents: 59% PBS, 40% Glycerol (glycerin, glycerine)
Purity	Protein A purified
Clonality	Monoclonal
Clone number	CL3118
Isotype	IgG1

Applications

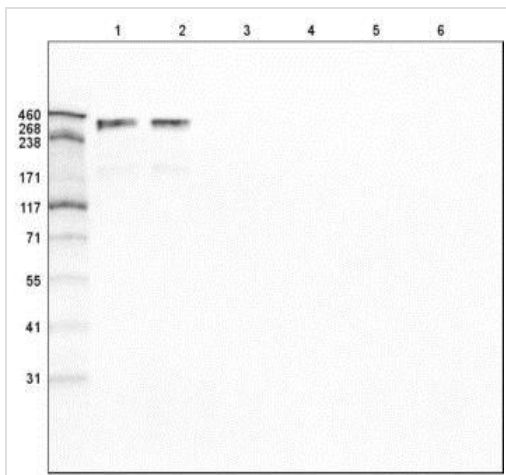
The Abpromise guarantee Our **Abpromise guarantee** covers the use of ab210957 in the following tested applications. The application notes include recommended starting dilutions; optimal dilutions/concentrations should be determined by the end user.

Application	Abreviews	Notes
IHC-P		1/200 - 1/500. Perform heat mediated antigen retrieval with citrate buffer pH 6 before commencing with IHC staining protocol.
WB		1/500 - 1/1000. Predicted molecular weight: 400 kDa.

Target

Function	Binding to cells via a high affinity receptor, laminin is thought to mediate the attachment, migration and organization of cells into tissues during embryonic development by interacting with other extracellular matrix components.
Tissue specificity	Expressed in heart, lung, kidney, skeletal muscle, pancreas, retina and placenta. Little or no expression in brain and liver.
Sequence similarities	Contains 22 laminin EGF-like domains. Contains 5 laminin G-like domains. Contains 1 laminin IV type A domain. Contains 1 laminin N-terminal domain.
Domain	Domain G is globular and is part of the major cell-binding site located in the long arm of the laminin heterotrimer.
Cellular localization	Secreted, extracellular space, extracellular matrix, basement membrane. Major component.

Images



Western blot - Anti-Laminin alpha 5/LAMA5 antibody [CL3118] (ab210957)

All lanes : Anti-Laminin alpha 5/LAMA5 antibody [CL3118] (ab210957) at 1/500 dilution

Lane 1 : Recombinant protein fragment of Human Laminin 511

Lane 2 : Recombinant protein fragment of Human Laminin 521

Lane 3 : Recombinant protein fragment of Human Laminin 121

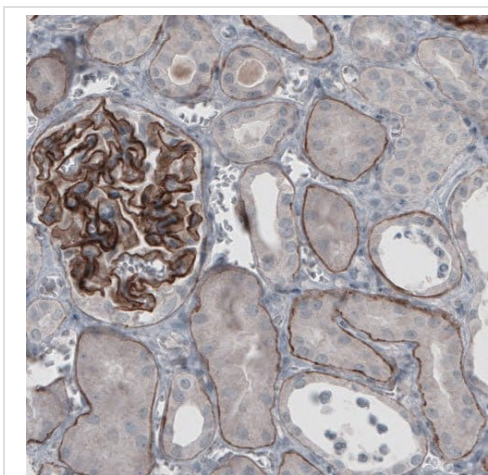
Lane 4 : Recombinant protein fragment of Human Laminin 221

Lane 5 : Recombinant protein fragment of Human Laminin 332

Lane 6 : Recombinant protein fragment of Human Laminin 411

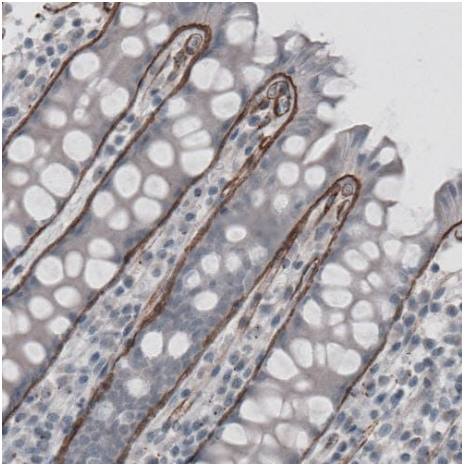
Developed using the ECL technique.

Predicted band size: 400 kDa



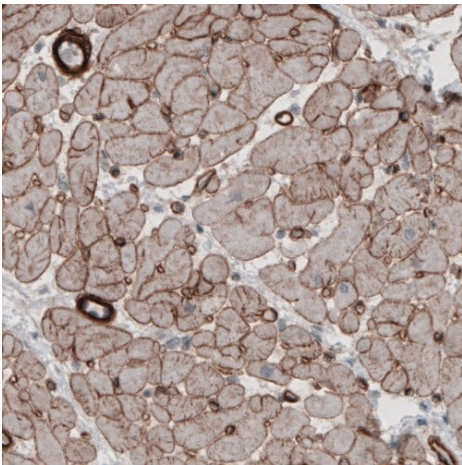
Immunohistochemistry (Formalin/PFA-fixed paraffin-embedded sections) - Anti-Laminin alpha 5/LAMA5 antibody [CL3118] (ab210957)

Immunohistochemical analysis of paraffin-embedded Human kidney tissue, labeling Laminin alpha 5/LAMA5 using ab210957 at a 1/200 dilution.



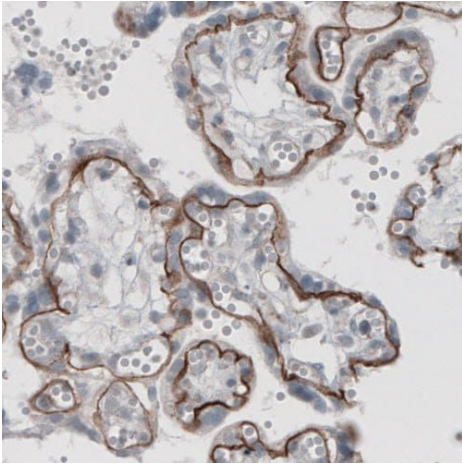
Immunohistochemical analysis of paraffin-embedded Human colon tissue, labeling Laminin alpha 5/LAMA5 using ab210957 at a 1/200 dilution.

Immunohistochemistry (Formalin/PFA-fixed paraffin-embedded sections) - Anti-Laminin alpha 5/LAMA5 antibody [CL3118] (ab210957)



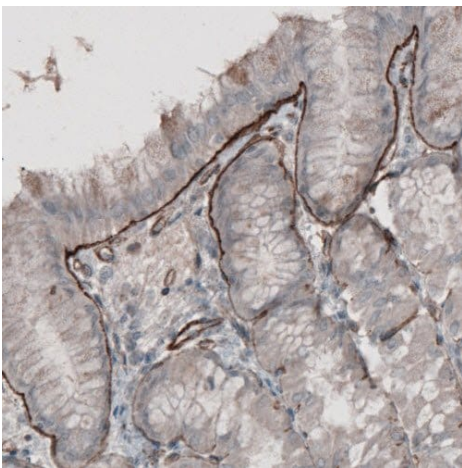
Immunohistochemical analysis of paraffin-embedded Human heart tissue, labeling Laminin alpha 5/LAMA5 using ab210957 at a 1/200 dilution.

Immunohistochemistry (Formalin/PFA-fixed paraffin-embedded sections) - Anti-Laminin alpha 5/LAMA5 antibody [CL3118] (ab210957)



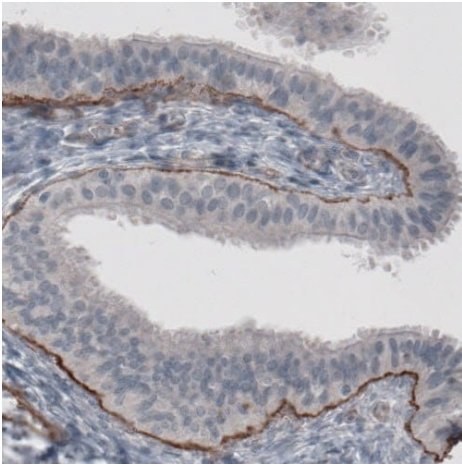
Immunohistochemical analysis of paraffin-embedded Human placenta tissue, labeling Laminin alpha 5/LAMA5 using ab210957 at a 1/200 dilution.

Immunohistochemistry (Formalin/PFA-fixed paraffin-embedded sections) - Anti-Laminin alpha 5/LAMA5 antibody [CL3118] (ab210957)



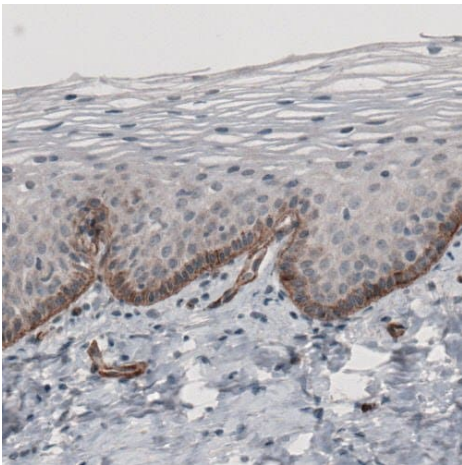
Immunohistochemical analysis of paraffin-embedded Human stomach tissue, labeling Laminin alpha 5/LAMA5 using ab210957 at a 1/200 dilution.

Immunohistochemistry (Formalin/PFA-fixed paraffin-embedded sections) - Anti-Laminin alpha 5/LAMA5 antibody [CL3118] (ab210957)



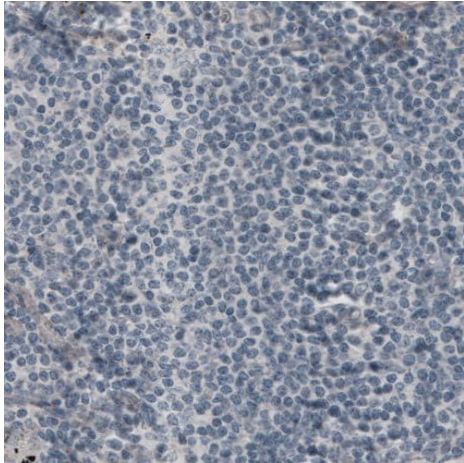
Immunohistochemical analysis of paraffin-embedded Human fallopian tube tissue, labeling Laminin alpha 5/LAMA5 using ab210957 at a 1/200 dilution.

Immunohistochemistry (Formalin/PFA-fixed paraffin-embedded sections) - Anti-Laminin alpha 5/LAMA5 antibody [CL3118] (ab210957)



Immunohistochemical analysis of paraffin-embedded Human cervix tissue, labeling Laminin alpha 5/LAMA5 using ab210957 at a 1/200 dilution.

Immunohistochemistry (Formalin/PFA-fixed paraffin-embedded sections) - Anti-Laminin alpha 5/LAMA5 antibody [CL3118] (ab210957)



Immunohistochemical analysis of paraffin-embedded Human lymph nodes tissue (negative control), labeling Laminin alpha 5/LAMA5 using ab210957 at a 1/200 dilution.

Immunohistochemistry (Formalin/PFA-fixed paraffin-embedded sections) - Anti-Laminin alpha 5/LAMA5 antibody [CL3118] (ab210957)

Please note: All products are "FOR RESEARCH USE ONLY. NOT FOR USE IN DIAGNOSTIC PROCEDURES"

Our Abpromise to you: Quality guaranteed and expert technical support

- Replacement or refund for products not performing as stated on the datasheet
- Valid for 12 months from date of delivery
- Response to your inquiry within 24 hours
- We provide support in Chinese, English, French, German, Japanese and Spanish
- Extensive multi-media technical resources to help you
- We investigate all quality concerns to ensure our products perform to the highest standards

If the product does not perform as described on this datasheet, we will offer a refund or replacement. For full details of the Abpromise, please visit <https://www.abcam.com/abpromise> or contact our technical team.

Terms and conditions

- Guarantee only valid for products bought direct from Abcam or one of our authorized distributors