


Anti-Laminin beta 1 antibody ab69633

[2 References](#) [3 Images](#)

Overview

Product name	Anti-Laminin beta 1 antibody
Description	Rabbit polyclonal to Laminin beta 1
Host species	Rabbit
Tested applications	Suitable for: WB, IHC-P, ICC/IF
Species reactivity	Reacts with: Human Predicted to work with: Mouse 
Immunogen	Synthesized peptide derived from the C-terminus of human Laminin beta 1.
Positive control	Hela cells, human liver carcinoma tissue and extracts from HepG2
General notes	<p>The Life Science industry has been in the grips of a reproducibility crisis for a number of years. Abcam is leading the way in addressing this with our range of recombinant monoclonal antibodies and knockout edited cell lines for gold-standard validation. Please check that this product meets your needs before purchasing.</p> <p>If you have any questions, special requirements or concerns, please send us an inquiry and/or contact our Support team ahead of purchase. Recommended alternatives for this product can be found below, along with publications, customer reviews and Q&As</p>

Properties

Form	Liquid
Storage instructions	Shipped at 4°C. Upon delivery aliquot and store at -20°C. Avoid freeze / thaw cycles.
Storage buffer	<p>pH: 7.40</p> <p>Preservative: 0.02% Sodium azide</p> <p>Constituents: 50% Glycerol (glycerin, glycerine), 0.87% Sodium chloride, PBS</p>
Purity	Without Mg2+ and Ca2+
Clonality	Immunogen affinity purified
Isotype	Polyclonal
Isotype	IgG

Applications

The Abpromise guarantee

Our **Abpromise guarantee** covers the use of ab69633 in the following tested applications.

The application notes include recommended starting dilutions; optimal dilutions/concentrations should be determined by the end user.

Application	Abreviews	Notes
WB		1/500 - 1/1000. Detects a band of approximately 60, 67, 110, 130, >170 kDa (predicted molecular weight: 198 kDa).
IHC-P		1/50 - 1/100.
ICC/IF		1/500 - 1/1000.

Target

Function

Binding to cells via a high affinity receptor, laminin is thought to mediate the attachment, migration and organization of cells into tissues during embryonic development by interacting with other extracellular matrix components.

Sequence similarities

Contains 13 laminin EGF-like domains.
Contains 1 laminin IV type B domain.
Contains 1 laminin N-terminal domain.

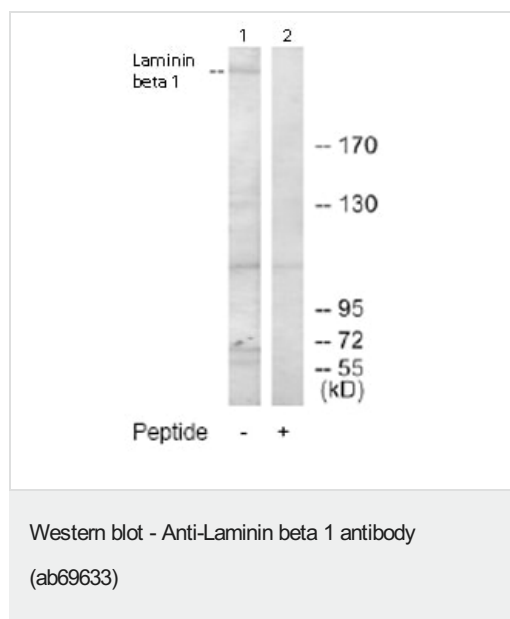
Domain

The alpha-helical domains I and II are thought to interact with other laminin chains to form a coiled coil structure.
Domains VI and IV are globular.

Cellular localization

Secreted > extracellular space > extracellular matrix > basement membrane. Major component.

Images



All lanes : Anti-Laminin beta 1 antibody (ab69633) at 1/500 dilution

Lane 1 : Extracts from HepG2 cells

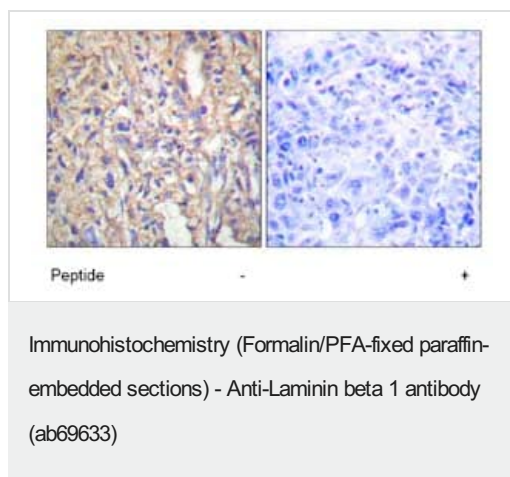
Lane 2 : Extracts from HepG2 cells with immunising peptide at 5 µg

Lysates/proteins at 5 µg per lane.

Predicted band size: 198 kDa

Observed band size: >170 kDa

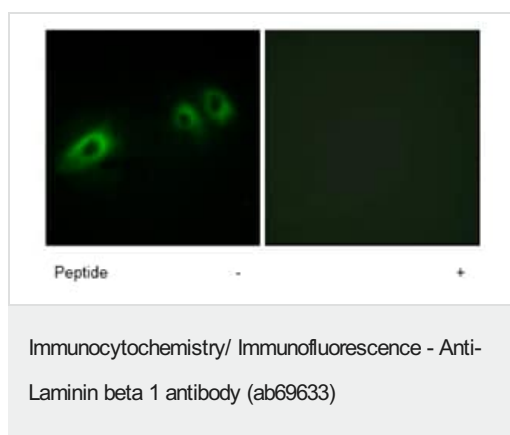
Additional bands at: 110 kDa, 130 kDa, 60 kDa, 67 kDa. We are unsure as to the identity of these extra bands.



Immunohistochemistry analysis of paraffin-embedded human liver carcinoma tissue using ab69633 at 1:50 dilution.

Left image un-treated.

Right image treated with immunizing peptide.



Immunofluorescence analysis of HeLa cells using ab69633 at a 1:500 dilution.

Left image un-treated.

Right image treated with immunizing peptide.

Please note: All products are "FOR RESEARCH USE ONLY. NOT FOR USE IN DIAGNOSTIC PROCEDURES"

Our Abpromise to you: Quality guaranteed and expert technical support

- Replacement or refund for products not performing as stated on the datasheet
- Valid for 12 months from date of delivery
- Response to your inquiry within 24 hours
- We provide support in Chinese, English, French, German, Japanese and Spanish
- Extensive multi-media technical resources to help you
- We investigate all quality concerns to ensure our products perform to the highest standards

If the product does not perform as described on this datasheet, we will offer a refund or replacement. For full details of the Abpromise, please visit <https://www.abcam.com/abpromise> or contact our technical team.

Terms and conditions

- Guarantee only valid for products bought direct from Abcam or one of our authorized distributors