

Product datasheet

Anti-Laminin beta 1 antibody [DG10] ab88279

[1 Image](#)

Overview

Product name	Anti-Laminin beta 1 antibody [DG10]
Description	Mouse monoclonal [DG10] to Laminin beta 1
Host species	Mouse
Specificity	ab88279 appears to react with the NH ₂ terminus of Laminin beta 1.
Tested applications	Suitable for: IHC-P
Species reactivity	Reacts with: Human
Immunogen	Tissue, cells or virus corresponding to Human Laminin beta 1. Partially pepsin digested Laminins from human placenta.
Positive control	IHC-P: Fetal kidney
General notes	<p>ab88279 is derived from the hybridoma produced by fusion between myeloma cells and Balb/c spleen cells.</p> <p>The Life Science industry has been in the grips of a reproducibility crisis for a number of years. Abcam is leading the way in addressing this with our range of recombinant monoclonal antibodies and knockout edited cell lines for gold-standard validation. Please check that this product meets your needs before purchasing.</p> <p>If you have any questions, special requirements or concerns, please send us an inquiry and/or contact our Support team ahead of purchase. Recommended alternatives for this product can be found below, along with publications, customer reviews and Q&As</p>

Properties

Form	Liquid
Storage instructions	Shipped at 4°C. Store at +4°C short term (1-2 weeks). Store at -20°C or -80°C. Avoid freeze / thaw cycle.
Storage buffer	Preservative: 0.09% Sodium azide Constituents: 1% BSA, PBS
Purity	Protein G purified
Primary antibody notes	ab88279 is derived from the hybridoma produced by fusion between myeloma cells and Balb/c spleen cells.

Clonality	Monoclonal
Clone number	DG10
Isotype	IgG1

Applications

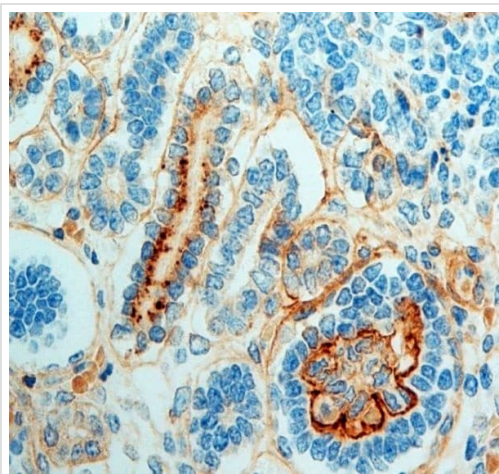
The Abpromise guarantee Our **Abpromise guarantee** covers the use of ab88279 in the following tested applications. The application notes include recommended starting dilutions; optimal dilutions/concentrations should be determined by the end user.

Application	Abreviews	Notes
IHC-P		1/50. Perform heat mediated antigen retrieval with Tris/EDTA buffer pH 9.0 before commencing with IHC staining protocol.

Target

Function	Binding to cells via a high affinity receptor, laminin is thought to mediate the attachment, migration and organization of cells into tissues during embryonic development by interacting with other extracellular matrix components.
Sequence similarities	Contains 13 laminin EGF-like domains. Contains 1 laminin IV type B domain. Contains 1 laminin N-terminal domain.
Domain	The alpha-helical domains I and II are thought to interact with other laminin chains to form a coiled coil structure. Domains VI and IV are globular.
Cellular localization	Secreted > extracellular space > extracellular matrix > basement membrane. Major component.

Images



Immunohistochemical analysis of formalin fixed, paraffin embedded fetal kidney tissue labelling Laminin beta with **ab98597** at 1/50 dilution.

Pretreated with EDTA.

Immunohistochemistry (Formalin/PFA-fixed paraffin-embedded sections) - Anti-Laminin beta 1 antibody [DG10] (ab88279)

Please note: All products are "FOR RESEARCH USE ONLY. NOT FOR USE IN DIAGNOSTIC PROCEDURES"

Our Abpromise to you: Quality guaranteed and expert technical support

- Replacement or refund for products not performing as stated on the datasheet
- Valid for 12 months from date of delivery
- Response to your inquiry within 24 hours
- We provide support in Chinese, English, French, German, Japanese and Spanish
- Extensive multi-media technical resources to help you
- We investigate all quality concerns to ensure our products perform to the highest standards

If the product does not perform as described on this datasheet, we will offer a refund or replacement. For full details of the Abpromise, please visit <https://www.abcam.com/abpromise> or contact our technical team.

Terms and conditions

- Guarantee only valid for products bought direct from Abcam or one of our authorized distributors