


Anti-LAMP2B antibody - Lysosome Marker ab18529

★★★★☆ [4 Abreviews](#) [26 References](#) [1 Image](#)

Overview

Product name	Anti-LAMP2B antibody - Lysosome Marker
Description	Rabbit polyclonal to LAMP2B - Lysosome Marker
Host species	Rabbit
Specificity	This product has low sequence homology with Mouse LAMP2B (67%), and high sequence homology with Mouse LAMP2C (91.7%).
Tested applications	Suitable for: WB
Species reactivity	Reacts with: Human Predicted to work with: Cow 
Immunogen	Synthetic peptide corresponding to Human LAMP2B aa 350 to the C-terminus (C terminal) conjugated to keyhole limpet haemocyanin. LAMP2 has 3 distinct isoforms, LAMP2A, 2B & 2C which are expressed in different tissues and differ in sequence at the extreme C-terminus. Database link: P13473 (Peptide available as ab23321)
Positive control	This antibody gave a positive signal in the following whole cell lysates: HeLa, HEK293. This antibody gave a positive signal in the following Methanol fixed cell lines: HeLa. It also gave a positive signal in Human skin tissue sections.
General notes	<p>The Life Science industry has been in the grips of a reproducibility crisis for a number of years. Abcam is leading the way in addressing this with our range of recombinant monoclonal antibodies and knockout edited cell lines for gold-standard validation. Please check that this product meets your needs before purchasing.</p> <p>If you have any questions, special requirements or concerns, please send us an inquiry and/or contact our Support team ahead of purchase. Recommended alternatives for this product can be found below, along with publications, customer reviews and Q&As</p>

Properties

Form	Liquid
Storage instructions	Shipped at 4°C. Store at +4°C short term (1-2 weeks). Upon delivery aliquot. Store at -20°C or -80°C. Avoid freeze / thaw cycle.
Storage buffer	pH: 7.40 Preservative: 0.02% Sodium azide

Constituent: PBS

Batches of this product that have a concentration < 1mg/ml may have BSA added as a stabilising agent. If you would like information about the formulation of a specific lot, please contact our scientific support team who will be happy to help.

Purity Immunogen affinity purified
Clonality Polyclonal
Isotype IgG

Applications

The Abpromise guarantee Our **Abpromise guarantee** covers the use of ab18529 in the following tested applications. The application notes include recommended starting dilutions; optimal dilutions/concentrations should be determined by the end user.

Application	Abreviews	Notes
WB	★★★★☆ (2)	Use a concentration of 1 µg/ml. Detects a band of approximately 110 kDa (predicted molecular weight: 110 kDa).

Target

Function Implicated in tumor cell metastasis. May function in protection of the lysosomal membrane from autodigestion, maintenance of the acidic environment of the lysosome, adhesion when expressed on the cell surface (plasma membrane), and inter- and intracellular signal transduction. Protects cells from the toxic effects of methylating mutagens.

Tissue specificity Isoform LAMP-2A is highly expressed in placenta, lung and liver, less in kidney and pancreas, low in brain and skeletal muscle. Isoform LAMP-2B is highly expressed in skeletal muscle, less in brain, placenta, lung, kidney and pancreas, very low in liver.

Involvement in disease Danon disease

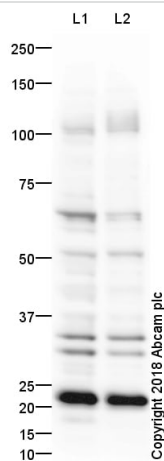
Sequence similarities Belongs to the LAMP family.

Post-translational modifications O- and N-glycosylated; some of the 16 N-linked glycans are polylactosaminoglycans.

Cellular localization Cell membrane. Endosome membrane. Lysosome membrane. This protein shuttles between lysosomes, endosomes, and the plasma membrane.

Form Alternative splicing produces 3 isoforms.

Images



Western blot - Anti-LAMP2B antibody - Lysosome Marker (ab18529)

All lanes : Anti-LAMP2B antibody - Lysosome Marker (ab18529) at 1 µg/ml

Lane 1 : HeLa (Human epithelial carcinoma cell line) Whole Cell Lysate

Lane 2 : HEK293 (Human) Whole Cell Lysate

Lysates/proteins at 20 µg per lane.

Secondary

All lanes : Goat Anti-Rabbit IgG H&L (HRP) preadsorbed at 1/50000 dilution

Developed using the ECL technique.

Performed under reducing conditions.

Predicted band size: 110 kDa

Observed band size: 110 kDa

Additional bands at: 22 kDa (possible non-specific binding), 33 kDa (possible non-specific binding), 34 kDa (possible non-specific binding), 65 kDa (possible non-specific binding)

Exposure time: 4 minutes

This blot was produced using a 4-12% Bis-tris gel under the MOPS buffer system. The gel was run at 200V for 50 minutes before being transferred onto a Nitrocellulose membrane at 30V for 70 minutes. The blot was incubated with ab18529 overnight at 4°C. Antibody binding was detected using an anti-rabbit antibody conjugated to HRP, and visualised using ECL development solution [ab133406](#).

LAMP2B undergoes extensive glycosylation so ab18529 detects a band of 110 kDa by Western blot.

Our Abpromise to you: Quality guaranteed and expert technical support

- Replacement or refund for products not performing as stated on the datasheet
- Valid for 12 months from date of delivery
- Response to your inquiry within 24 hours

- We provide support in Chinese, English, French, German, Japanese and Spanish
- Extensive multi-media technical resources to help you
- We investigate all quality concerns to ensure our products perform to the highest standards

If the product does not perform as described on this datasheet, we will offer a refund or replacement. For full details of the Abpromise, please visit <https://www.abcam.com/abpromise> or contact our technical team.

Terms and conditions

- Guarantee only valid for products bought direct from Abcam or one of our authorized distributors