




Product datasheet

Anti-LAMTOR1 antibody ab229760

KO **VALIDATED**

[1 References](#) [2 Images](#)

Overview

Product name	Anti-LAMTOR1 antibody
Description	Rabbit polyclonal to LAMTOR1
Host species	Rabbit
Tested applications	Suitable for: WB
Species reactivity	Reacts with: Human Predicted to work with: Mouse, Rat, Cow, Rhesus monkey 
Immunogen	Recombinant full length protein corresponding to Human LAMTOR1 aa 1 to the C-terminus. Database link: Q6IAA8  Run BLAST with  Run BLAST with
Positive control	WB: HeLa and SK-N-SH whole cell extracts. HeLa, PANC-1 and U-2 OS cell lysates.
General notes	<p>The Life Science industry has been in the grips of a reproducibility crisis for a number of years. Abcam is leading the way in addressing this with our range of recombinant monoclonal antibodies and knockout edited cell lines for gold-standard validation. Please check that this product meets your needs before purchasing.</p> <p>If you have any questions, special requirements or concerns, please send us an inquiry and/or contact our Support team ahead of purchase. Recommended alternatives for this product can be found below, along with publications, customer reviews and Q&As</p>

Properties

Form	Liquid
Storage instructions	Shipped at 4°C. Store at +4°C short term (1-2 weeks). Upon delivery aliquot. Store at -20°C long term. Avoid freeze / thaw cycle.
Storage buffer	pH: 7.00 Preservative: 0.025% Proclin 300 Constituents: 79% PBS, 20% Glycerol (glycerin, glycerine)
Purity	Immunogen affinity purified
Clonality	Polyclonal
Isotype	IgG

Applications

The Abpromise guarantee

Our **Abpromise guarantee** covers the use of ab229760 in the following tested applications.

The application notes include recommended starting dilutions; optimal dilutions/concentrations should be determined by the end user.

Application	Abreviews	Notes
WB		1/500 - 1/3000. Predicted molecular weight: 18 kDa.

Target

Function

Regulator of the TOR pathway, a signaling cascade that promotes cell growth in response to growth factors, energy levels, and amino acids. As part of the Ragulator complex, recruits the Rag GTPases and the mTORC1 complex to lysosomes, a key step in activation of the TOR signaling cascade by amino acids. Directly responsible for anchoring the Ragulator complex to membranes. Also required for late endosomes/lysosomes biogenesis it may regulate both the recycling of receptors through endosomes and the MAPK signaling pathway through recruitment of some of its components to late endosomes. May be involved in cholesterol homeostasis regulating LDL uptake and cholesterol release from late endosomes/lysosomes. May also play a role in RHOA activation.

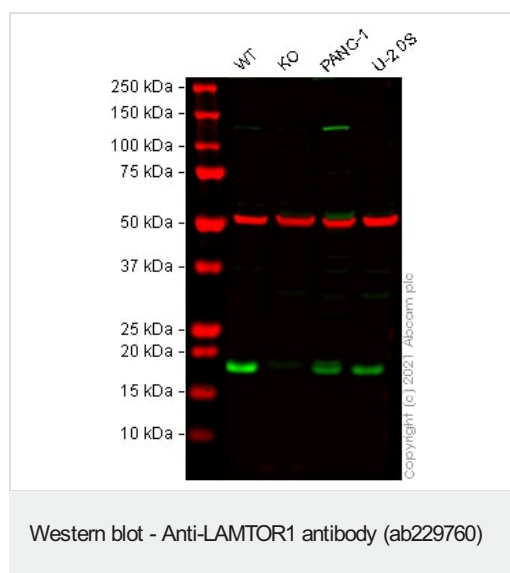
Sequence similarities

Belongs to the LAMTOR1 family.

Cellular localization

Late endosome membrane. Lysosome membrane. Cell membrane.

Images



All lanes : Anti-LAMTOR1 antibody (ab229760) at 1/500 dilution

Lane 1 : Wild-type HeLa cell lysate

Lane 2 : LAMTOR1 knockout HeLa cell lysate

Lane 3 : PANC-1 cell lysate

Lane 4 : U-2 OS cell lysate

Lysates/proteins at 20 µg per lane.

Performed under reducing conditions.

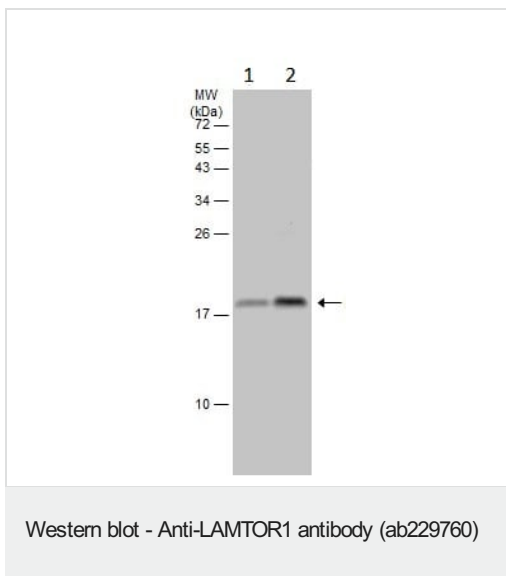
Predicted band size: 18 kDa

Observed band size: 18 kDa

Lanes 1 - 4: Merged signal (red and green). Green - ab229760 observed at 18 kDa. Red - loading control **ab7291** (Mouse anti-

Alpha Tubulin [DM1A]) observed at 55 kDa.

ab229760 was shown to react with LAMTOR1 in wild-type HeLa cells in Western blot with loss of signal observed in LAMTOR1 knockout cell line [ab265351](#) (LAMTOR1 knockout cell lysate [ab258938](#)). Wild-type HeLa and LAMTOR1 knockout cell lysates were subjected to SDS-PAGE. Membranes were blocked in 3 % milk in TBS-T (0.1 % Tween[®]) before incubation with ab229760 and [ab7291](#) (Mouse anti-Alpha Tubulin [DM1A]) overnight at 4 °C at a 1 in 500 dilution and a 1 in 20000 dilution respectively. Blots were incubated with Goat anti-Rabbit IgG H&L (IRDye[®] 800CW) preabsorbed ([ab216773](#)) and Goat anti-Mouse IgG H&L (IRDye[®] 680RD) preabsorbed ([ab216776](#)) secondary antibodies at 1 in 20000 dilution for 1 h at room temperature before imaging.



All lanes : Anti-LAMTOR1 antibody (ab229760) at 1/1000 dilution

Lane 1 : HeLa (human epithelial cell line from cervix adenocarcinoma) whole cell extract

Lane 2 : SK-N-SH (human neuroblastoma cell line) whole cell extract

Lysates/proteins at 60 µg per lane.

Secondary

All lanes : HRP-conjugated anti-rabbit IgG

Predicted band size: 18 kDa

15% SDS-PAGE gel.

Please note: All products are "FOR RESEARCH USE ONLY. NOT FOR USE IN DIAGNOSTIC PROCEDURES"

Our Abpromise to you: Quality guaranteed and expert technical support

- Replacement or refund for products not performing as stated on the datasheet
- Valid for 12 months from date of delivery
- Response to your inquiry within 24 hours
- We provide support in Chinese, English, French, German, Japanese and Spanish
- Extensive multi-media technical resources to help you
- We investigate all quality concerns to ensure our products perform to the highest standards

If the product does not perform as described on this datasheet, we will offer a refund or replacement. For full details of the Abpromise, please visit <https://www.abcam.com/abpromise> or contact our technical team.

Terms and conditions

- Guarantee only valid for products bought direct from Abcam or one of our authorized distributors