



Anti-LANCL2 antibody ab237520

3 Images

Overview

Product name	Anti-LANCL2 antibody
Description	Rabbit polyclonal to LANCL2
Host species	Rabbit
Tested applications	Suitable for: WB, IHC-P, ICC/IF
Species reactivity	Reacts with: Human
Immunogen	Recombinant fragment corresponding to Human LANCL2 aa 1-150. Database link: Q9NS86
	 Run BLAST with  Run BLAST with
Positive control	WB: A549 and U-87 MG whole cell lysate. IHC-P: Human brain tissue. ICC/IF: HepG2 cells.
General notes	<p>The Life Science industry has been in the grips of a reproducibility crisis for a number of years. Abcam is leading the way in addressing this with our range of recombinant monoclonal antibodies and knockout edited cell lines for gold-standard validation. Please check that this product meets your needs before purchasing.</p> <p>If you have any questions, special requirements or concerns, please send us an inquiry and/or contact our Support team ahead of purchase. Recommended alternatives for this product can be found below, along with publications, customer reviews and Q&As</p>

Properties

Form	Liquid
Storage instructions	Shipped at 4°C. Store at +4°C short term (1-2 weeks). Upon delivery aliquot. Store at -20°C long term. Avoid freeze / thaw cycle.
Storage buffer	pH: 7.40 Preservative: 0.03% Proclin 300 Constituents: PBS, 50% Glycerol (glycerin, glycerine)
Purity	Protein G purified
Purification notes	Purity >95%
Clonality	Polyclonal
Isotype	IgG

Applications

The Abpromise guarantee

Our **Abpromise guarantee** covers the use of ab237520 in the following tested applications.

The application notes include recommended starting dilutions; optimal dilutions/concentrations should be determined by the end user.

Application	Abreviews	Notes
WB		1/500 - 1/5000. Predicted molecular weight: 51 kDa.
IHC-P		1/200 - 1/500.
ICC/IF		1/50 - 1/200.

Target

Function

Necessary for abscisic acid (ABA) binding on the cell membrane and activation of the ABA signaling pathway in granulocytes.

Tissue specificity

Expressed in brain and testis.

Sequence similarities

Belongs to the LanC-like protein family.

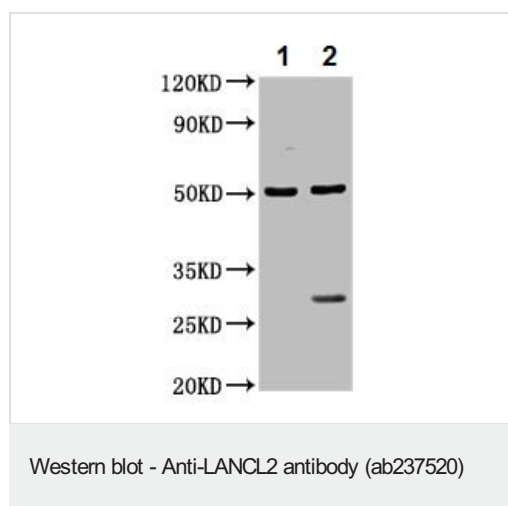
Post-translational modifications

Myristoylated. Essential for membrane association.

Cellular localization

Nucleus. Cytoplasm. Cell membrane. Localizes to the juxta-nuclear vesicles. Associates with the cortical actin cytoskeleton. Cholesterol depletion by methyl-beta-cyclodextrin causes partial dissociation from the cell membrane in vitro and an enhanced cell detachment from the matrix in vivo. Membrane-association is important for the increased cellular sensitivity to an anticancer drug.

Images



All lanes : Anti-LANCL2 antibody (ab237520) at 1/500 dilution

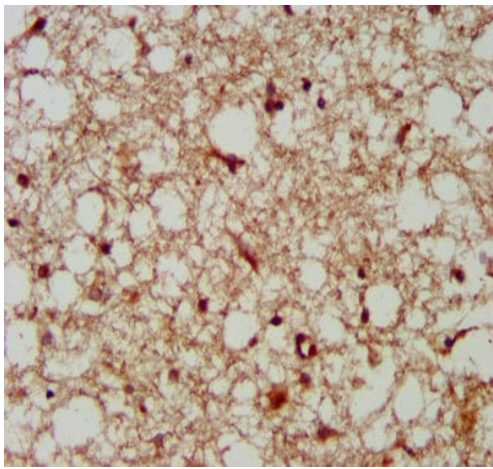
Lane 1 : A549 (human lung carcinoma cell line) whole cell lysate

Lane 2 : U-87 MG (human glioblastoma-astrocytoma epithelial cell line) whole cell lysate

Secondary

All lanes : Goat polyclonal to rabbit IgG at 1/50000 dilution

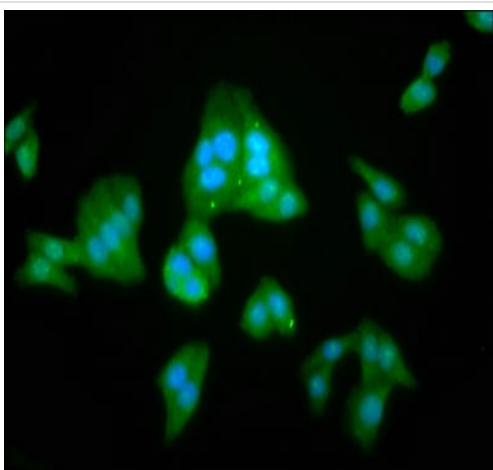
Predicted band size: 51 kDa



Immunohistochemistry (Formalin/PFA-fixed paraffin-embedded sections) - Anti-LANCL2 antibody (ab237520)

Paraffin-embedded human brain tissue stained for LANCL2 using ab237520 at 1/300 dilution in immunohistochemical analysis.

After dewaxing and hydration, antigen retrieval was mediated by high pressure in a citrate buffer (pH 6.0). Section was blocked with 10% normal goat serum 30min at RT. Then primary antibody (1% BSA) was incubated at 4°C overnight. The primary is detected by a biotinylated secondary antibody and visualized using an HRP conjugated SP system.



Immunocytochemistry/ Immunofluorescence - Anti-LANCL2 antibody (ab237520)

HepG2 (human liver hepatocellular carcinoma cell line) cells stained for LANCL2 (Green) using ab237520 at 1/100 dilution in ICC/IF, followed by Alexa Fluor® 488-conjugated Goat Anti-Rabbit IgG (H+L) secondary antibody.

The cells were fixed in 4% formaldehyde, permeabilized using 0.2% Triton X-100 and blocked in 10% normal Goat Serum. The cells were then incubated with the antibody overnight at 4°C.

Counterstained with DAPI.

Please note: All products are "FOR RESEARCH USE ONLY. NOT FOR USE IN DIAGNOSTIC PROCEDURES"

Our Abpromise to you: Quality guaranteed and expert technical support

- Replacement or refund for products not performing as stated on the datasheet
- Valid for 12 months from date of delivery
- Response to your inquiry within 24 hours
- We provide support in Chinese, English, French, German, Japanese and Spanish
- Extensive multi-media technical resources to help you

- We investigate all quality concerns to ensure our products perform to the highest standards

If the product does not perform as described on this datasheet, we will offer a refund or replacement. For full details of the Abpromise, please visit <https://www.abcam.com/abpromise> or contact our technical team.

Terms and conditions

- Guarantee only valid for products bought direct from Abcam or one of our authorized distributors