

Product datasheet

Anti-LAP3 antibody [EPR10330] ab154809


KO VALIDATED

Recombinant

RabMAb

[3 References](#) [10 Images](#)

Overview

| | |
|---------------------|--|
| Product name | Anti-LAP3 antibody [EPR10330] |
| Description | Rabbit monoclonal [EPR10330] to LAP3 |
| Host species | Rabbit |
| Tested applications | Suitable for: Flow Cyt (Intra), WB, IHC-P Unsuitable for: ICC/IF or IP |
| Species reactivity | Reacts with: Human Predicted to work with: Rat  |
| Immunogen | Synthetic peptide within Human LAP3 aa 1-100. The exact sequence is proprietary. (Peptide available as ab200873) |
| Positive control | WB: A549, 293T, HepG2 and HeLa cell lysates; Human fetal liver lysate. IHC-P: Human kidney and ovarian carcinoma tissues. Flow Cyt (intra): 293T cells. |
| General notes | <p>This product is a recombinant monoclonal antibody, which offers several advantages including:</p> <ul style="list-style-type: none"> - High batch-to-batch consistency and reproducibility - Improved sensitivity and specificity - Long-term security of supply - Animal-free production <p>For more information see here.</p> <p>Our RabMAb[®] technology is a patented hybridoma-based technology for making rabbit monoclonal antibodies. For details on our patents, please refer to RabMAb[®] patents.</p> <p>Mouse: We have preliminary internal testing data to indicate this antibody may not react with this species. Please contact us for more information.</p> |

Properties

| | |
|----------------------|--|
| Form | Liquid |
| Storage instructions | Shipped at 4°C. Store at -20°C. |
| Storage buffer | pH: 7.2 Preservative: 0.01% Sodium azide Constituents: 9% PBS, 40% Glycerol (glycerin, glycerine), 0.05% BSA, 50% Tissue culture supernatant |

| | |
|---------------------|----------------------------|
| Purity | Tissue culture supernatant |
| Clonality | Monoclonal |
| Clone number | EPR10330 |
| Isotype | IgG |

Applications

The Abpromise guarantee Our **Abpromise guarantee** covers the use of ab154809 in the following tested applications.

The application notes include recommended starting dilutions; optimal dilutions/concentrations should be determined by the end user.

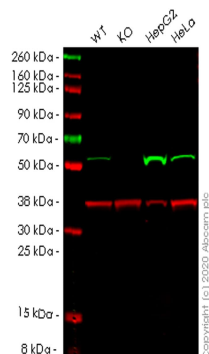
| Application | Abreviews | Notes |
|-------------------------|-----------|--|
| Flow Cyt (Intra) | | 1/10 - 1/100. <u>ab172730</u> - Rabbit monoclonal IgG, is suitable for use as an isotype control with this antibody. |
| WB | | 1/1000 - 1/10000. Predicted molecular weight: 56 kDa. |
| IHC-P | | 1/50 - 1/100. Perform heat mediated antigen retrieval before commencing with IHC staining protocol. |

Application notes Is unsuitable for ICC/IF or IP.

Target

| | |
|------------------------------|--|
| Function | Presumably involved in the processing and regular turnover of intracellular proteins. Catalyzes the removal of unsubstituted N-terminal amino acids from various peptides. |
| Sequence similarities | Belongs to the peptidase M17 family. |
| Cellular localization | Cytoplasm. |

Images



Western blot - Anti-LAP3 antibody [EPR10330]
(ab154809)

All lanes : Anti-LAP3 antibody [EPR10330] (ab154809) at 1/1000 dilution

Lane 1 : Wild-type A549 cell lysate

Lane 2 : LAP3 knockout A549 cell lysate

Lane 3 : HepG2 cell lysate

Lane 4 : HeLa cell lysate

Lysates/proteins at 20 µg per lane.

Secondary

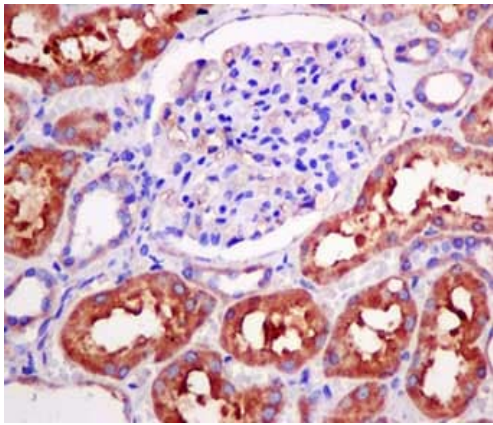
All lanes : Goat anti-Rabbit IgG H&L (IRDye® 800CW) preadsorbed (**ab216773**) at 1/10000 dilution

Predicted band size: 56 kDa

Observed band size: 56 kDa

Lanes 1-4: Merged signal (red and green). Green - ab154809 observed at 56 kDa. Red - loading control **ab8245** observed at 36 kDa.

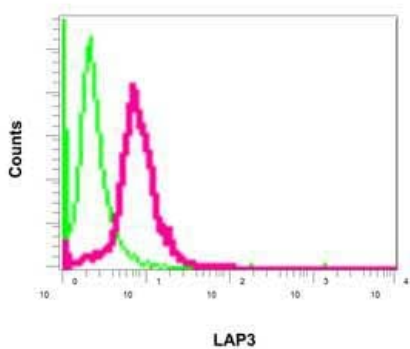
ab154809 Anti-LAP3 antibody [EPR10330] was shown to specifically react with LAP3 in wild-type A549 cells. Loss of signal was observed when knockout cell line **ab266986** (knockout cell lysate **ab258023**) was used. Wild-type and LAP3 knockout samples were subjected to SDS-PAGE. ab154809 and Anti-GAPDH antibody [6C5] - Loading Control (**ab8245**) were incubated overnight at 4°C at 1 in 1000 dilution and 1 in 20000 dilution respectively. Blots were developed with Goat anti-Rabbit IgG H&L (IRDye® 800CW) preadsorbed (**ab216773**) and Goat anti-Mouse IgG H&L (IRDye® 680RD) preadsorbed (**ab216776**) secondary antibodies at 1 in 20000 dilution for 1 hour at room temperature before imaging.



Immunohistochemistry (Formalin/PFA-fixed paraffin-embedded sections) - Anti-LAP3 antibody [EPR10330] (ab154809)

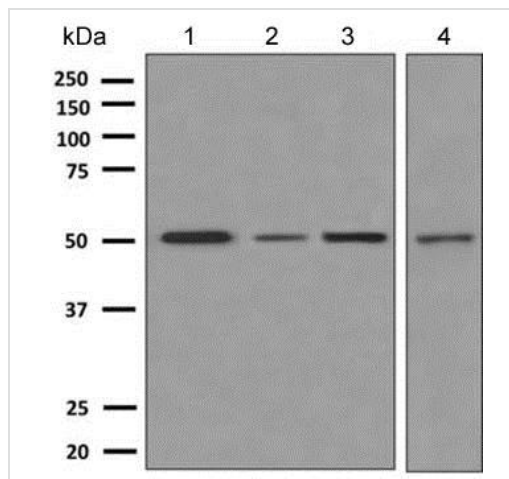
Immunohistochemical analysis of paraffin-embedded human kidney tissue labeling LAP3 with ab154809 at 1/50 dilution.

Perform heat mediated antigen retrieval before commencing with IHC staining protocol.



Flow Cytometry (Intracellular) - Anti-LAP3 antibody [EPR10330] (ab154809)

Intracellular flow cytometric analysis of permeabilized 293T cells labeling LAP3 with ab154809 at 1/10 dilution (red) or a negative rabbit IgG (control) (green).



Western blot - Anti-LAP3 antibody [EPR10330]
(ab154809)

All lanes : Anti-LAP3 antibody [EPR10330] (ab154809) at 1/1000 dilution

Lane 1 : Human fetal liver lysate

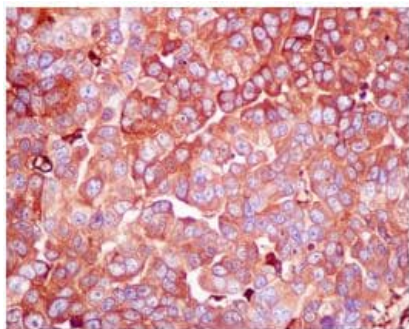
Lane 2 : 293T lysate

Lane 3 : HepG2 lysate

Lane 4 : HeLa lysate

Lysates/proteins at 10 µg per lane.

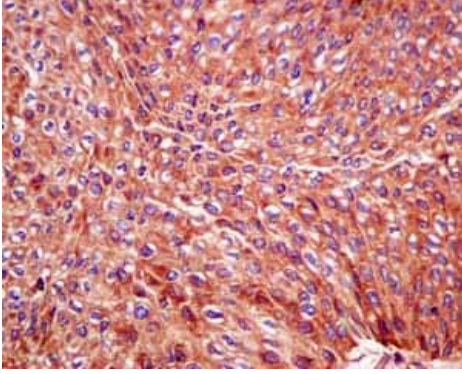
Predicted band size: 56 kDa



Immunohistochemistry (Formalin/PFA-fixed paraffin-embedded sections) - Anti-LAP3 antibody
[EPR10330] (ab154809)

Immunohistochemical analysis of paraffin-embedded ovarian human carcinoma tissue labeling LAP3 with ab154809 at 1/50 dilution.

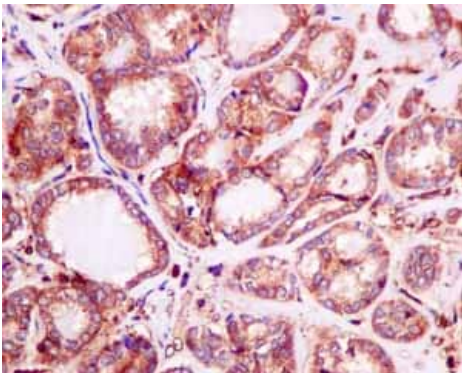
Perform heat mediated antigen retrieval before commencing with IHC staining protocol.



Immunohistochemistry (Formalin/PFA-fixed paraffin-embedded sections) - Anti-LAP3 antibody
[EPR10330] (ab154809)

Immunohistochemical analysis of paraffin embedded Human urinary bladder transitional carcinoma tissue using ab154809 showing +ve staining.

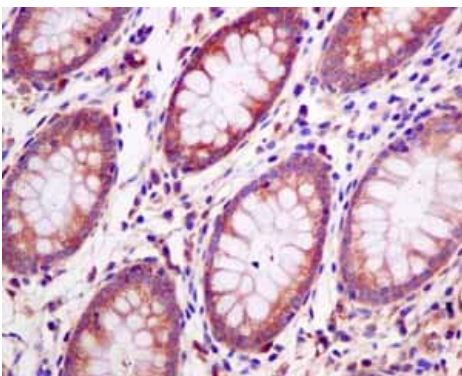
Perform heat mediated antigen retrieval before commencing with IHC staining protocol.



Immunohistochemistry (Formalin/PFA-fixed paraffin-embedded sections) - Anti-LAP3 antibody
[EPR10330] (ab154809)

Immunohistochemical analysis of paraffin embedded Human thyroid gland carcinoma tissue using ab154809 showing +ve staining.

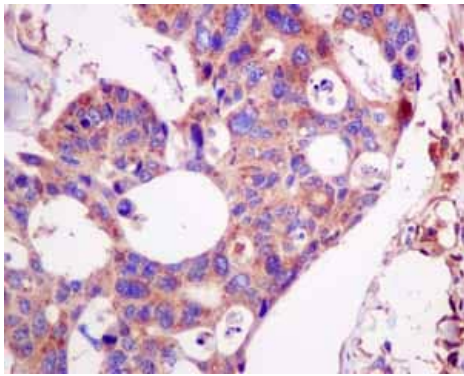
Perform heat mediated antigen retrieval before commencing with IHC staining protocol.



Immunohistochemistry (Formalin/PFA-fixed paraffin-embedded sections) - Anti-LAP3 antibody
[EPR10330] (ab154809)

Immunohistochemical analysis of paraffin embedded Human normal colon tissue using ab154809 showing +ve staining.

Perform heat mediated antigen retrieval before commencing with IHC staining protocol.



Immunohistochemical analysis of paraffin embedded Human colonic adenocarcinoma tissue using ab154809 showing +ve staining.

Perform heat mediated antigen retrieval before commencing with IHC staining protocol.

Immunohistochemistry (Formalin/PFA-fixed paraffin-embedded sections) - Anti-LAP3 antibody [EPR10330] (ab154809)

Why choose a recombinant antibody?



Anti-LAP3 antibody [EPR10330] (ab154809)

Please note: All products are "FOR RESEARCH USE ONLY. NOT FOR USE IN DIAGNOSTIC PROCEDURES"

Our Abpromise to you: Quality guaranteed and expert technical support

- Replacement or refund for products not performing as stated on the datasheet
- Valid for 12 months from date of delivery
- Response to your inquiry within 24 hours
- We provide support in Chinese, English, French, German, Japanese and Spanish
- Extensive multi-media technical resources to help you
- We investigate all quality concerns to ensure our products perform to the highest standards

If the product does not perform as described on this datasheet, we will offer a refund or replacement. For full details of the Abpromise, please visit <https://www.abcam.com/abpromise> or contact our technical team.

Terms and conditions

- Guarantee only valid for products bought direct from Abcam or one of our authorized distributors