


Product datasheet

Anti-LARP1 antibody - C-terminal ab229142

[2 Images](#)

Overview

Product name	Anti-LARP1 antibody - C-terminal
Description	Rabbit polyclonal to LARP1 - C-terminal
Host species	Rabbit
Tested applications	Suitable for: WB, ICC/IF
Species reactivity	Reacts with: Human Predicted to work with: Mouse 
Immunogen	Recombinant fragment within Human LARP1 (C terminal). The exact sequence is proprietary. Database link: Q6PKG0
Positive control	WB: IMR32 and SK-N-AS whole cell extracts. ICC/IF: HeLa cells.
General notes	<p>The Life Science industry has been in the grips of a reproducibility crisis for a number of years. Abcam is leading the way in addressing this with our range of recombinant monoclonal antibodies and knockout edited cell lines for gold-standard validation. Please check that this product meets your needs before purchasing.</p> <p>If you have any questions, special requirements or concerns, please send us an inquiry and/or contact our Support team ahead of purchase. Recommended alternatives for this product can be found below, along with publications, customer reviews and Q&As</p>

Properties

Form	Liquid
Storage instructions	Shipped at 4°C. Store at +4°C short term (1-2 weeks). Upon delivery aliquot. Store at -20°C long term. Avoid freeze / thaw cycle.
Storage buffer	pH: 7.00 Preservative: 0.01% Thimerosal (merthiolate) Constituents: 79.99% PBS, 20% Glycerol (glycerin, glycerine)
Purity	Immunogen affinity purified
Clonality	Polyclonal
Isotype	IgG

Applications

The Abpromise guarantee

Our **Abpromise guarantee** covers the use of ab229142 in the following tested applications.

The application notes include recommended starting dilutions; optimal dilutions/concentrations should be determined by the end user.

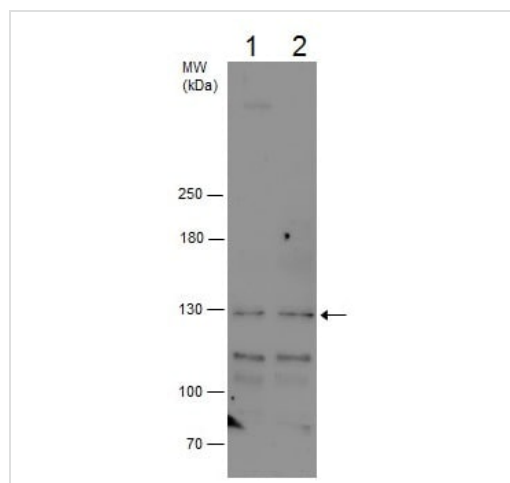
Application	Abreviews	Notes
WB		1/500 - 1/3000. Predicted molecular weight: 124 kDa.
ICC/IF		1/100 - 1/1000.

Target

Relevance

LARP1 belongs to the LARP family and contains 1 HTH La-type RNA-binding domain.

Images



Western blot - Anti-LARP1 antibody - C-terminal (ab229142)

All lanes : Anti-LARP1 antibody - C-terminal (ab229142) at 1/500 dilution

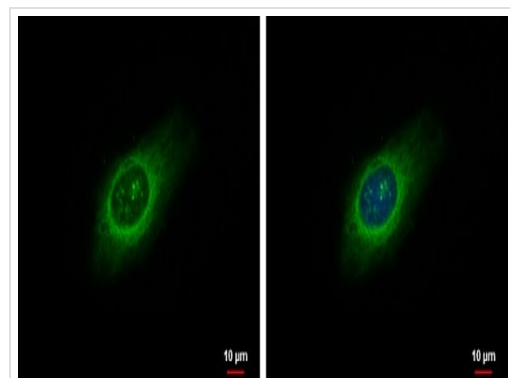
Lane 1 : IMR32 (human neuroblast cell line) whole cell extract

Lane 2 : SK-N-AS (human neuroblastoma cell line) whole cell extract

Lysates/proteins at 30 µg per lane.

Predicted band size: 124 kDa

5% SDS-PAGE gel.



Immunocytochemistry/ Immunofluorescence - Anti-LARP1 antibody - C-terminal (ab229142)

Ice-cold methanol-fixed HeLa (human epithelial cell line from cervix adenocarcinoma) cells stained for LARP1 (green) using ab229142 at 1/500 dilution in ICC/IF.

Nuclear counterstain: Hoechst 33342 (blue).

Please note: All products are "FOR RESEARCH USE ONLY. NOT FOR USE IN DIAGNOSTIC PROCEDURES"

Our Abpromise to you: Quality guaranteed and expert technical support

- Replacement or refund for products not performing as stated on the datasheet
- Valid for 12 months from date of delivery
- Response to your inquiry within 24 hours

- We provide support in Chinese, English, French, German, Japanese and Spanish
- Extensive multi-media technical resources to help you
- We investigate all quality concerns to ensure our products perform to the highest standards

If the product does not perform as described on this datasheet, we will offer a refund or replacement. For full details of the Abpromise, please visit <https://www.abcam.com/abpromise> or contact our technical team.

Terms and conditions

- Guarantee only valid for products bought direct from Abcam or one of our authorized distributors