




## Product datasheet

# Anti-LASP1 antibody - N-terminal ab191022

[7 References](#) [3 Images](#)

### Overview

<b>Product name</b>	Anti-LASP1 antibody - N-terminal
<b>Description</b>	Rabbit polyclonal to LASP1 - N-terminal
<b>Host species</b>	Rabbit
<b>Tested applications</b>	<b>Suitable for:</b> IHC-P, ICC, WB
<b>Species reactivity</b>	<b>Reacts with:</b> Rat, Human <b>Predicted to work with:</b> Rabbit, Cow, Orangutan 
<b>Immunogen</b>	Synthetic peptide corresponding to Human LASP1 aa 1-100 (N terminal). Database link: <a href="#">Q14847</a> <div>  <a href="#">Run BLAST with</a>  <a href="#">Run BLAST with</a> </div>
<b>Positive control</b>	Rat liver, spleen and intestine tissue lysate. Jurkat, MCF7, A431, HeLa and 293T cell lysate.
<b>General notes</b>	<p>The Life Science industry has been in the grips of a reproducibility crisis for a number of years. Abcam is leading the way in addressing this with our range of recombinant monoclonal antibodies and knockout edited cell lines for gold-standard validation. Please check that this product meets your needs before purchasing.</p> <p>If you have any questions, special requirements or concerns, please send us an inquiry and/or contact our Support team ahead of purchase. Recommended alternatives for this product can be found below, along with publications, customer reviews and Q&amp;As</p>

### Properties

<b>Form</b>	Liquid
<b>Storage instructions</b>	Shipped at 4°C. Store at +4°C short term (1-2 weeks). Upon delivery aliquot. Store at -20°C long term. Avoid freeze / thaw cycle.
<b>Storage buffer</b>	Preservatives: 0.025% Thimerosal (merthiolate), 0.025% Sodium azide Constituents: 2.5% BSA, 0.45% Sodium chloride, 0.1% Sodium phosphate
<b>Purity</b>	Immunogen affinity purified
<b>Clonality</b>	Polyclonal
<b>Isotype</b>	IgG

### Applications

## The Abpromise guarantee

Our **Abpromise guarantee** covers the use of ab191022 in the following tested applications.

The application notes include recommended starting dilutions; optimal dilutions/concentrations should be determined by the end user.

Application	Abreviews	Notes
IHC-P		Use a concentration of 0.5 - 1 µg/ml. Perform heat mediated antigen retrieval with citrate buffer pH 6 before commencing with IHC staining protocol.
ICC		Use a concentration of 0.5 - 1 µg/ml.
WB		Use a concentration of 0.1 - 0.5 µg/ml. Predicted molecular weight: 30 kDa.

## Target

### Function

Plays an important role in the regulation of dynamic actin-based, cytoskeletal activities. Agonist-dependent changes in LASP1 phosphorylation may also serve to regulate actin-associated ion transport activities, not only in the parietal cell but also in certain other F-actin-rich secretory epithelial cell types.

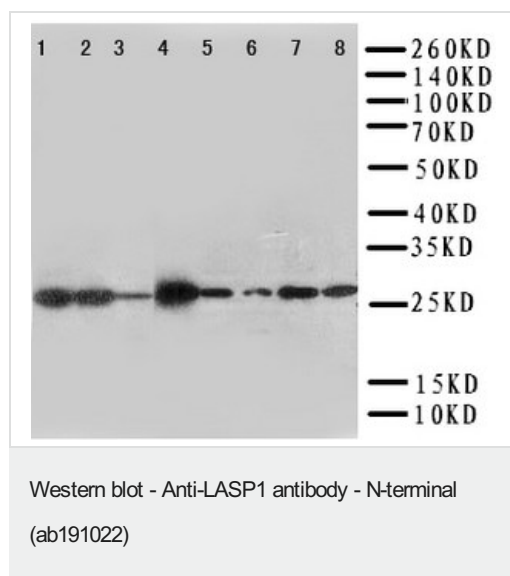
### Sequence similarities

Contains 1 LIM zinc-binding domain.  
Contains 2 nebulin repeats.  
Contains 1 SH3 domain.

### Cellular localization

Cytoplasm > cell cortex. Cytoplasm > cytoskeleton. Associated with the F-actin rich cortical cytoskeleton.

## Images



**All lanes :** Anti-LASP1 antibody - N-terminal (ab191022) at 0.5 µg/ml

**Lane 1 :** Rat liver tissue lysate

**Lane 2 :** Rat spleen tissue lysate

**Lane 3 :** Rat intestine tissue lysate

**Lane 4 :** Jurkat cell lysate

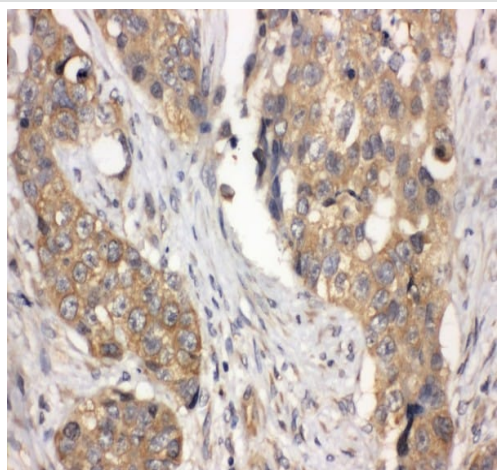
**Lane 5 :** MCF7 cell lysate

**Lane 6 :** A431 cell lysate

**Lane 7 :** HeLa cell lysate

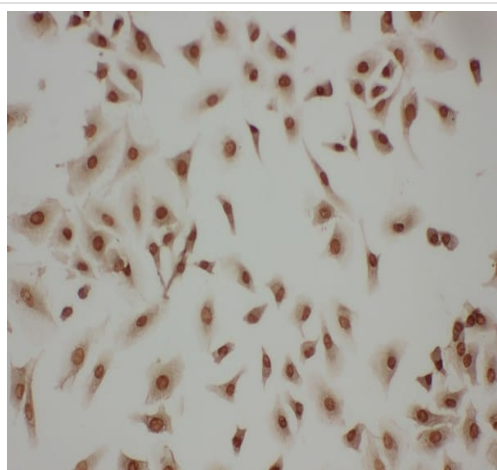
**Lane 8 :** 293T cell lysate

**Predicted band size:** 30 kDa



Immunohistochemical analysis of formalin/PFA-fixed paraffin-embedded human lung cancer tissue labelling LASP1 with ab191022 at 1 µg/ml.

Immunohistochemistry (Formalin/PFA-fixed paraffin-embedded sections) - Anti-LASP1 antibody - N-terminal (ab191022)



Immunocytochemical analysis of A549 cells, staining LASP1 with ab191022 at 1 µg/ml.

Immunocytochemistry - Anti-LASP1 antibody - N-terminal (ab191022)

**Please note:** All products are "FOR RESEARCH USE ONLY. NOT FOR USE IN DIAGNOSTIC PROCEDURES"

### Our Abpromise to you: Quality guaranteed and expert technical support

- Replacement or refund for products not performing as stated on the datasheet
- Valid for 12 months from date of delivery
- Response to your inquiry within 24 hours
- We provide support in Chinese, English, French, German, Japanese and Spanish
- Extensive multi-media technical resources to help you
- We investigate all quality concerns to ensure our products perform to the highest standards

If the product does not perform as described on this datasheet, we will offer a refund or replacement. For full details of the Abpromise, please visit <https://www.abcam.com/abpromise> or contact our technical team.

#### **Terms and conditions**

---

- Guarantee only valid for products bought direct from Abcam or one of our authorized distributors