

Product datasheet

Anti-LBP antibody ab231182

4 Images

Overview

Product name	Anti-LBP antibody
Description	Rabbit polyclonal to LBP
Host species	Rabbit
Tested applications	Suitable for: WB
Species reactivity	Reacts with: Cow, Human
Immunogen	Recombinant fragment (His-T7-tag) corresponding to Cow LBP aa 200 to the C-terminus. Expressed in E.coli. Database link: Q2TBI0 Run BLAST with Run BLAST with
Positive control	WB: Recombinant cow LBP; Jurkat, A549 and HeLa cell lysates.
General notes	<p>The Life Science industry has been in the grips of a reproducibility crisis for a number of years. Abcam is leading the way in addressing this with our range of recombinant monoclonal antibodies and knockout edited cell lines for gold-standard validation. Please check that this product meets your needs before purchasing.</p> <p>If you have any questions, special requirements or concerns, please send us an inquiry and/or contact our Support team ahead of purchase. Recommended alternatives for this product can be found below, along with publications, customer reviews and Q&As</p>

Properties

Form	Liquid
Storage instructions	Shipped at 4°C. Store at +4°C short term (1-2 weeks). Upon delivery aliquot. Store at -20°C long term. Avoid freeze / thaw cycle.
Storage buffer	pH: 7.40 Preservative: 0.02% Sodium azide Constituents: 44.12% PBS, 55.77% Glycerol (glycerin, glycerine)
Purity	Immunogen affinity purified
Purification notes	Antigen-specific affinity chromatography followed by Protein A affinity chromatography.
Clonality	Polyclonal
Isotype	IgG

Applications

The Abpromise guarantee Our **Abpromise guarantee** covers the use of ab231182 in the following tested applications.

The application notes include recommended starting dilutions; optimal dilutions/concentrations should be determined by the end user.

Application	Abreviews	Notes
WB		Use a concentration of 0.2 - 2 µg/ml. Predicted molecular weight: 53 kDa.

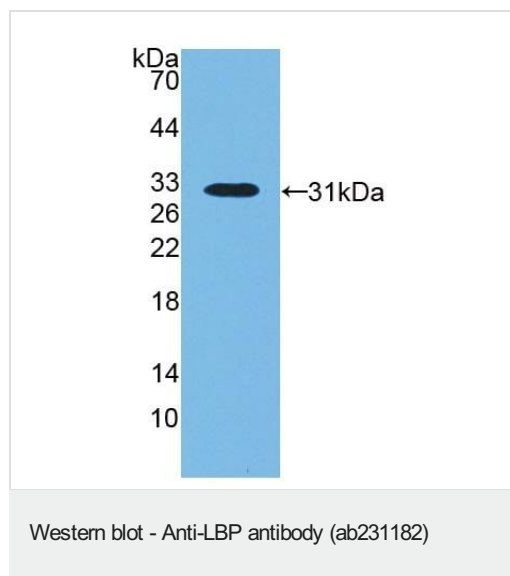
Target

Function Binds to the lipid A moiety of bacterial lipopolysaccharides (LPS), a glycolipid present in the outer membrane of all Gram-negative bacteria. The LBP/LPS complex seems to interact with the CD14 receptor.

Sequence similarities Belongs to the BPI/LBP/Plunc superfamily. BPI/LBP family.

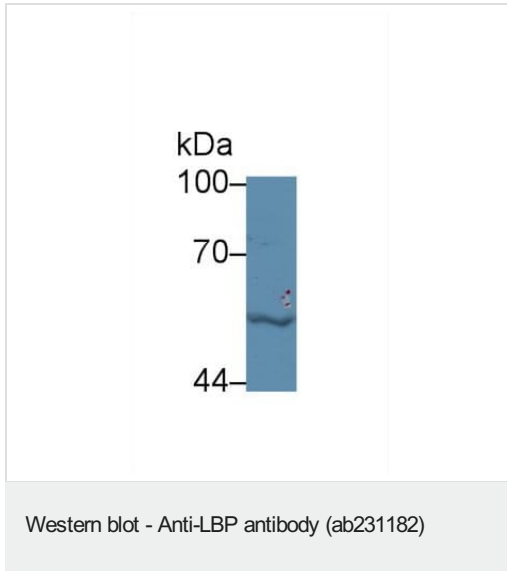
Cellular localization Secreted.

Images



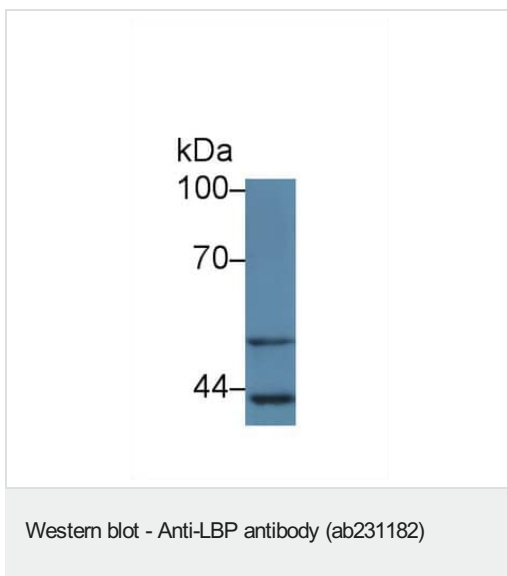
Anti-LBP antibody (ab231182) at 2 µg/ml + Recombinant cow LBP

Predicted band size: 53 kDa



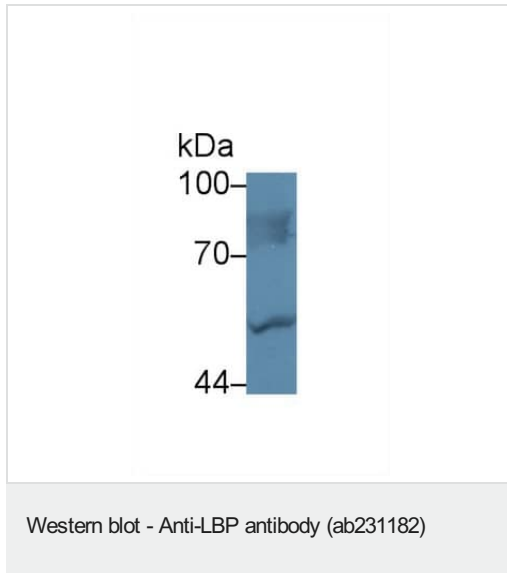
Anti-LBP antibody (ab231182) at 2 μ g/ml + Jurkat (human T cell leukemia cell line from peripheral blood) cell lysate

Predicted band size: 53 kDa



Anti-LBP antibody (ab231182) at 2 μ g/ml + A549 (human lung carcinoma cell line) cell lysate

Predicted band size: 53 kDa



Anti-LBP antibody (ab231182) at 2 µg/ml + HeLa (human epithelial cell line from cervix adenocarcinoma) cell lysate

Predicted band size: 53 kDa

Please note: All products are "FOR RESEARCH USE ONLY. NOT FOR USE IN DIAGNOSTIC PROCEDURES"

Our Abpromise to you: Quality guaranteed and expert technical support

- Replacement or refund for products not performing as stated on the datasheet
- Valid for 12 months from date of delivery
- Response to your inquiry within 24 hours
- We provide support in Chinese, English, French, German, Japanese and Spanish
- Extensive multi-media technical resources to help you
- We investigate all quality concerns to ensure our products perform to the highest standards

If the product does not perform as described on this datasheet, we will offer a refund or replacement. For full details of the Abpromise, please visit <https://www.abcam.com/abpromise> or contact our technical team.

Terms and conditions

- Guarantee only valid for products bought direct from Abcam or one of our authorized distributors