

## Product datasheet

# Anti-LBP antibody [EPR10865] ab169776

Recombinant RabMAb

[2 References](#) [3 Images](#)

### Overview

<b>Product name</b>	Anti-LBP antibody [EPR10865]
<b>Description</b>	Rabbit monoclonal [EPR10865] to LBP
<b>Host species</b>	Rabbit
<b>Tested applications</b>	<b>Suitable for:</b> WB, IP <b>Unsuitable for:</b> ICC/IF or IHC-P
<b>Species reactivity</b>	<b>Reacts with:</b> Human <b>Does not react with:</b> Mouse, Rat
<b>Immunogen</b>	Synthetic peptide within Human LBP aa 50-150. The exact sequence is proprietary. Database link: <a href="#">P18428</a>
<b>Positive control</b>	Human serum and Human plasma lysates.
<b>General notes</b>	This product is a recombinant monoclonal antibody, which offers several advantages including: <ul style="list-style-type: none"><li>- High batch-to-batch consistency and reproducibility</li><li>- Improved sensitivity and specificity</li><li>- Long-term security of supply</li><li>- Animal-free production</li></ul> For more information <a href="#">see here</a> . Our RabMAb <sup>®</sup> technology is a patented hybridoma-based technology for making rabbit monoclonal antibodies. For details on our patents, please refer to <a href="#">RabMAb<sup>®</sup> patents</a> .

### Properties

<b>Form</b>	Liquid
<b>Storage instructions</b>	Shipped at 4°C. Store at +4°C short term (1-2 weeks). Upon delivery aliquot. Store at -20°C long term. Avoid freeze / thaw cycle.
<b>Storage buffer</b>	pH: 7.2 Preservative: 0.01% Sodium azide Constituents: 9% PBS, 40% Glycerol (glycerin, glycerine), 0.05% BSA, 50% Tissue culture supernatant
<b>Purity</b>	Tissue culture supernatant
<b>Clonality</b>	Monoclonal

Clone number                   EPR10865  
Isotype                            IgG

## Applications

**The Abpromise guarantee**           Our **Abpromise guarantee** covers the use of ab169776 in the following tested applications. The application notes include recommended starting dilutions; optimal dilutions/concentrations should be determined by the end user.

Application	Abreviews	Notes
WB		1/1000 - 1/5000. Detects a band of approximately 60 kDa (predicted molecular weight: 53 kDa).
IP		1/10 - 1/100.

**Application notes**                    Is unsuitable for ICC/IF or IHC-P.

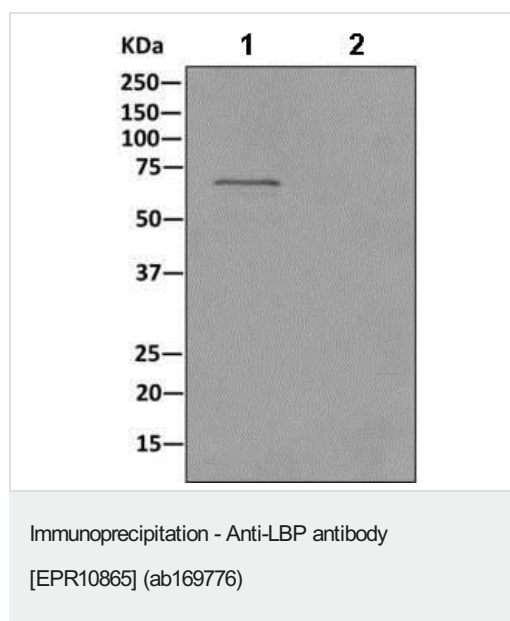
## Target

**Function**                                Binds to the lipid A moiety of bacterial lipopolysaccharides (LPS), a glycolipid present in the outer membrane of all Gram-negative bacteria. The LBP/LPS complex seems to interact with the CD14 receptor.

**Sequence similarities**                Belongs to the BPI/LBP/Plunc superfamily. BPI/LBP family.

**Cellular localization**                Secreted.

## Images



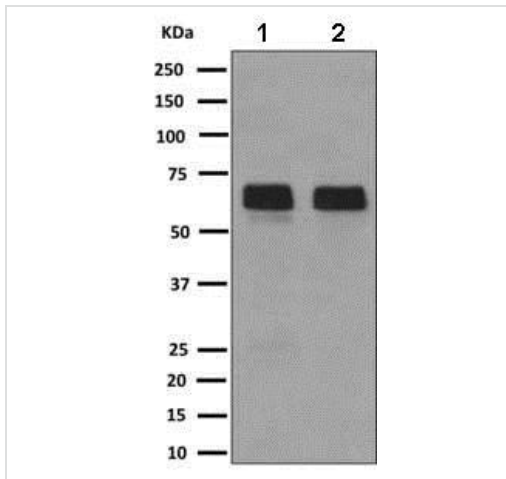
**All lanes** : Anti-LBP antibody [EPR10865] (ab169776) at 1/1000 dilution

**Lane 1** : Immunoprecipitation of LBP from Human plasma lysate using ab169776 at 1/10 dilution

**Lane 2** : 1 X PBS Negative control

### Secondary

**All lanes** : HRP-conjugated anti-rabbit IgG



Western blot - Anti-LBP antibody [EPR10865] (ab169776)

**All lanes :** Anti-LBP antibody [EPR10865] (ab169776) at 1/1000 dilution

**Lane 1 :** Human serum lysate

**Lane 2 :** Human plasma lysate





Lysates/proteins at 10 µg per lane.

**Secondary**

**All lanes :** Goat anti-rabbit HRP at 1/2000 dilution

**Predicted band size:** 53 kDa

Why choose a recombinant antibody?

 <b>Research with confidence</b> Consistent and reproducible results	 <b>Long-term and scalable supply</b> Recombinant technology
 <b>Success from the first experiment</b> Confirmed specificity	 <b>Ethical standards compliant</b> Animal-free production

Anti-LBP antibody [EPR10865] (ab169776)

**Please note:** All products are "FOR RESEARCH USE ONLY. NOT FOR USE IN DIAGNOSTIC PROCEDURES"

**Our Abpromise to you: Quality guaranteed and expert technical support**

- Replacement or refund for products not performing as stated on the datasheet
- Valid for 12 months from date of delivery
- Response to your inquiry within 24 hours
- We provide support in Chinese, English, French, German, Japanese and Spanish
- Extensive multi-media technical resources to help you
- We investigate all quality concerns to ensure our products perform to the highest standards

If the product does not perform as described on this datasheet, we will offer a refund or replacement. For full details of the Abpromise,

please visit <https://www.abcam.com/abpromise> or contact our technical team.

## **Terms and conditions**

---

- Guarantee only valid for products bought direct from Abcam or one of our authorized distributors