

Product datasheet

Anti-LC3B antibody [EPR21234] ab232940

KO

VALIDATED

Recombinant

★★★★☆ 4 Abreviews 3 References 2 Images

Overview

Product name	Anti-LC3B antibody [EPR21234]
Description	Rabbit monoclonal [EPR21234] to LC3B
Host species	Rabbit
Tested applications	Suitable for: ICC/IF Unsuitable for: IHC-P
Species reactivity	Reacts with: Human
Immunogen	Recombinant full length protein. This information is proprietary to Abcam and/or its suppliers.
Positive control	ICC/IF: HAP1 cells (+/- chloroquine), (HAP1-MAP1LC3B knockout cells used as negative cell line).
General notes	This product was made using <u>synthetic libraries and phage display technology</u> . This antibody is a recombinant chimeric antibody. Rabbit chimeric monoclonal antibody (Human Fab/ Rabbit Fc).

Properties

Form	Liquid
Storage instructions	Shipped at 4°C. Store at +4°C short term (1-2 weeks). Upon delivery aliquot. Store at -20°C long term. Avoid freeze / thaw cycle.
Storage buffer	pH: 7.20 Preservative: 0.01% Sodium azide Constituents: 0.05% BSA, 59% PBS, 40% Glycerol (glycerin, glycerine)
Purity	Protein A purified
Clonality	Monoclonal
Clone number	EPR21234
Isotype	IgG

Applications

The Abpromise guarantee

Our **Abpromise guarantee** covers the use of ab232940 in the following tested applications.

The application notes include recommended starting dilutions; optimal dilutions/concentrations should be determined by the end user.

Application	Abreviews	Notes
ICC/IF	★★★★★ (1)	Use at an assay dependent concentration.

Application notes

Is unsuitable for IHC-P.

Target

Function

Probably involved in formation of autophagosomal vacuoles (autophagosomes).

Tissue specificity

Most abundant in heart, brain, skeletal muscle and testis. Little expression observed in liver.

Sequence similarities

Belongs to the MAP1 LC3 family.

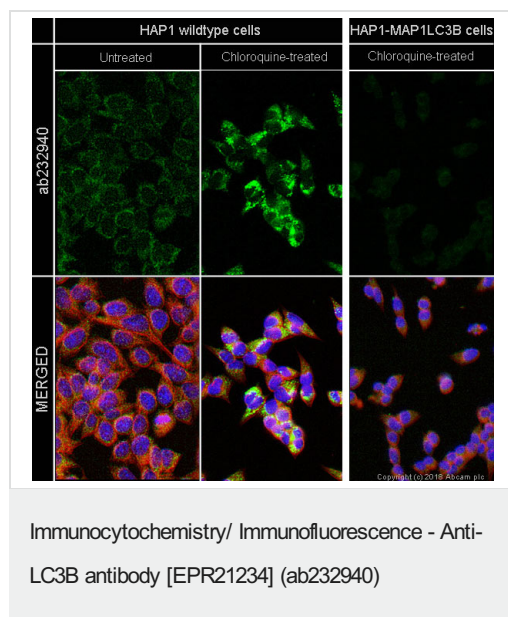
Post-translational modifications

The precursor molecule is cleaved by APG4B/ATG4B to form LC3-I. This is activated by APG7L/ATG7, transferred to ATG3 and conjugated to phospholipid to form LC3-II.

Cellular localization

Cytoplasm > cytoskeleton. Endomembrane system. Cytoplasmic vesicle > autophagosome membrane. LC3-II binds to the autophagic membranes.

Images



ab232940 staining LC3B in HAP1 cells (wildtype and MAP1LC3B knockout) +/- Chloroquine (50µM, 24 hours). The cells were fixed with 100% methanol (5 min), permeabilized with 0.1% Triton X-100 for 5 minutes and then blocked with 1% BSA/10% normal goat serum/0.3M glycine in 0.1% PBS-Tween for 1h. The cells were then incubated overnight at +4°C with ab232940 at 0.1µg/ml and **ab195889** then detected with an Alexa Fluor® 488 goat anti-rabbit secondary antibody (**ab150081**) at a 1/1000 dilution (shown in green). Nuclear DNA was labelled with DAPI (shown in blue), and **ab195889**, Mouse monoclonal to alpha Tubulin (Alexa Fluor® 594), at a 1/250 dilution (shown in red).

Why choose a recombinant antibody?



Research with confidence
Consistent and reproducible results



Long-term and scalable supply
Recombinant technology



Success from the first experiment
Confirmed specificity



Ethical standards compliant
Animal-free production

Anti-LC3B antibody [EPR21234] (ab232940)

Please note: All products are "FOR RESEARCH USE ONLY. NOT FOR USE IN DIAGNOSTIC PROCEDURES"

Our Abpromise to you: Quality guaranteed and expert technical support

- Replacement or refund for products not performing as stated on the datasheet
- Valid for 12 months from date of delivery
- Response to your inquiry within 24 hours
- We provide support in Chinese, English, French, German, Japanese and Spanish
- Extensive multi-media technical resources to help you
- We investigate all quality concerns to ensure our products perform to the highest standards

If the product does not perform as described on this datasheet, we will offer a refund or replacement. For full details of the Abpromise, please visit <https://www.abcam.com/abpromise> or contact our technical team.

Terms and conditions

- Guarantee only valid for products bought direct from Abcam or one of our authorized distributors