


Product datasheet

Anti-LC3B antibody [RM293] ab222776

Recombinant

[1 References](#) [4 Images](#)

Overview

Product name	Anti-LC3B antibody [RM293]
Description	Rabbit monoclonal [RM293] to LC3B
Host species	Rabbit
Tested applications	Suitable for: WB, IHC-P, ICC/IF
Species reactivity	Reacts with: Human Predicted to work with: Mouse, Rat 
Immunogen	Synthetic peptide corresponding to Human LC3B (N terminal). Database link: Q9GZQ8
Positive control	WB: HeLa cell lysate, untreated or treated with chloroquine. IHC-P: Human brain tissue. ICC/IF: HeLa cells.

Properties

Form	Liquid
Storage instructions	Shipped at 4°C. Store at +4°C short term (1-2 weeks). Upon delivery aliquot. Store at -20°C long term. Avoid freeze / thaw cycle.
Storage buffer	Preservative: 0.09% Sodium azide Constituents: 1% BSA, 50% Glycerol (glycerin, glycerine), PBS
Purity	Protein A purified
Purification notes	ab222776 was purified from an animal origin-free culture supernatant.
Clonality	Monoclonal
Clone number	RM293
Isotype	IgG

Applications

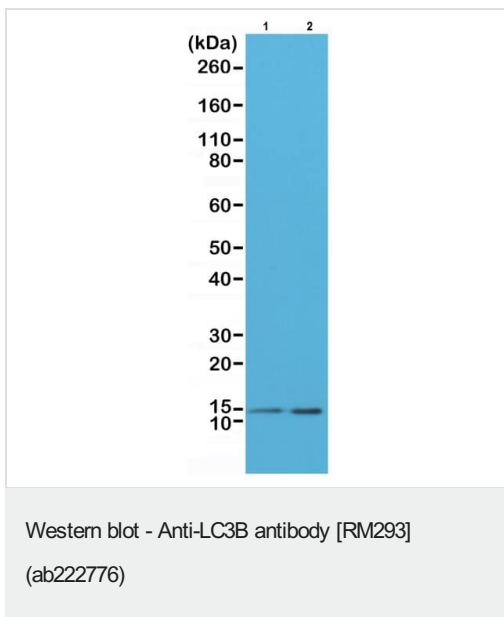
The Abpromise guarantee Our **Abpromise guarantee** covers the use of ab222776 in the following tested applications. The application notes include recommended starting dilutions; optimal dilutions/concentrations should be determined by the end user.

Application	Abreviews	Notes
WB		1/100 - 1/200. Predicted molecular weight: 15 kDa.
IHC-P		1/100 - 1/200.
ICC/IF		1/100 - 1/200.

Target

Function	Probably involved in formation of autophagosomal vacuoles (autophagosomes).
Tissue specificity	Most abundant in heart, brain, skeletal muscle and testis. Little expression observed in liver.
Sequence similarities	Belongs to the MAP1 LC3 family.
Post-translational modifications	The precursor molecule is cleaved by APG4B/ATG4B to form LC3-I. This is activated by APG7L/ATG7, transferred to ATG3 and conjugated to phospholipid to form LC3-II.
Cellular localization	Cytoplasm > cytoskeleton. Endomembrane system. Cytoplasmic vesicle > autophagosome membrane. LC3-II binds to the autophagic membranes.

Images

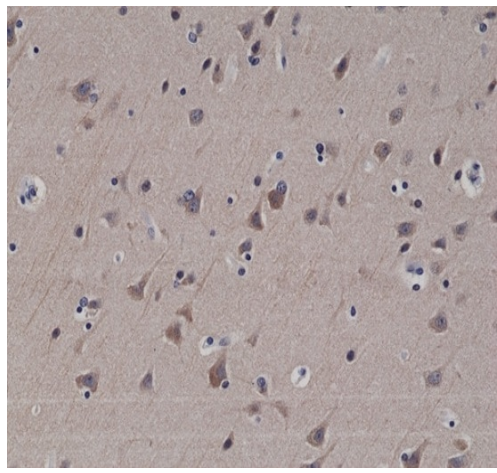


All lanes : Anti-LC3B antibody [RM293] (ab222776) at 1/200 dilution

Lane 1 : HeLa (human epithelial cell line from cervix adenocarcinoma) cell lysate

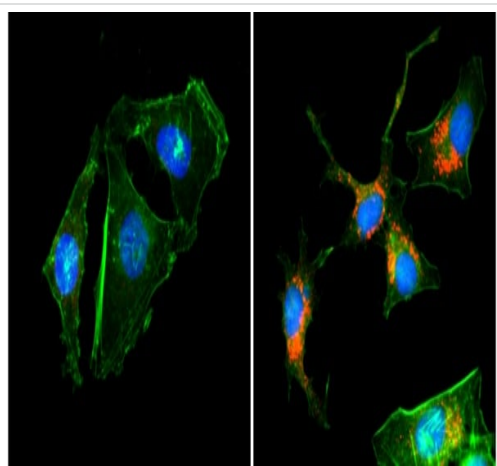
Lane 2 : HeLa (human epithelial cell line from cervix adenocarcinoma) treated with chloroquine, cell lysate

Predicted band size: 15 kDa



Immunohistochemistry (Formalin/PFA-fixed paraffin-embedded sections) - Anti-LC3B antibody [RM293] (ab222776)


Formalin-fixed, paraffin-embedded human brain tissue stained for LC3B with ab222776 at 1/200 dilution in immunohistochemical analysis.



Immunocytochemistry/ Immunofluorescence - Anti-LC3B antibody [RM293] (ab222776)

HeLa (human epithelial cell line from cervix adenocarcinoma) cells, untreated (left panel) or treated with chloroquine (right panel) stained for LC3B (red) using ab222776 at 1/200 dilution in ICC/IF. Actin filaments were labeled with fluorescein phalloidin (green). Nuclei were labeled with DAPI (blue).

Why choose a recombinant antibody?



Research with confidence
Consistent and reproducible results

Long-term and scalable supply
Recombinant technology

Success from the first experiment
Confirmed specificity

Ethical standards compliant
Animal-free production

Anti-LC3B antibody [RM293] (ab222776)

Please note: All products are "FOR RESEARCH USE ONLY. NOT FOR USE IN DIAGNOSTIC PROCEDURES"

Our Abpromise to you: Quality guaranteed and expert technical support

- Replacement or refund for products not performing as stated on the datasheet
- Valid for 12 months from date of delivery
- Response to your inquiry within 24 hours
- We provide support in Chinese, English, French, German, Japanese and Spanish
- Extensive multi-media technical resources to help you
- We investigate all quality concerns to ensure our products perform to the highest standards

If the product does not perform as described on this datasheet, we will offer a refund or replacement. For full details of the Abpromise, please visit <https://www.abcam.com/abpromise> or contact our technical team.

Terms and conditions

- Guarantee only valid for products bought direct from Abcam or one of our authorized distributors