




Product datasheet

Anti-LDB2 antibody ab3627

[1 Abreviews](#) [2 References](#) [1 Image](#)

Overview

Product name	Anti-LDB2 antibody
Description	Rabbit polyclonal to LDB2
Host species	Rabbit
Specificity	This antibody detects a single clean band representing LDB2 at 42kD in human kidney and mouse spleen.
Tested applications	Suitable for: WB
Species reactivity	Reacts with: Mouse, Human Predicted to work with: Chicken 
Immunogen	Synthetic peptide: SKESYHNSSITVDC conjugated to KLH, corresponding to amino acids 107-120 of Human LDB2.  Run BLAST with  Run BLAST with
General notes	<p>The Life Science industry has been in the grips of a reproducibility crisis for a number of years. Abcam is leading the way in addressing this with our range of recombinant monoclonal antibodies and knockout edited cell lines for gold-standard validation. Please check that this product meets your needs before purchasing.</p> <p>If you have any questions, special requirements or concerns, please send us an inquiry and/or contact our Support team ahead of purchase. Recommended alternatives for this product can be found below, along with publications, customer reviews and Q&As</p>

Properties

Form	Liquid
Storage instructions	Shipped at 4°C. Upon delivery aliquot and store at -20°C or -80°C. Avoid repeated freeze / thaw cycles.
Storage buffer	Preservative: 0.01% Sodium azide Constituents: 0.42% Potassium phosphate, 0.87% Sodium chloride
Purity	Immunogen affinity purified
Clonality	Polyclonal
Isotype	IgG

Applications

The Abpromise guarantee

Our **Abpromise guarantee** covers the use of ab3627 in the following tested applications.

The application notes include recommended starting dilutions; optimal dilutions/concentrations should be determined by the end user.

Application	Abreviews	Notes
WB		

Application notes

ICC/IF: Use at an assay dependent dilution (PMID 19675209).

WB: 1/500. Detects a band of approximately 42 kDa (predicted molecular weight: 42.7 kDa).

Not yet tested in other applications.

Optimal dilutions/concentrations should be determined by the end user.

Target

Function

Binds to the LIM domain of a wide variety of LIM domain-containing transcription factors.

Sequence similarities

Belongs to the LDB family.

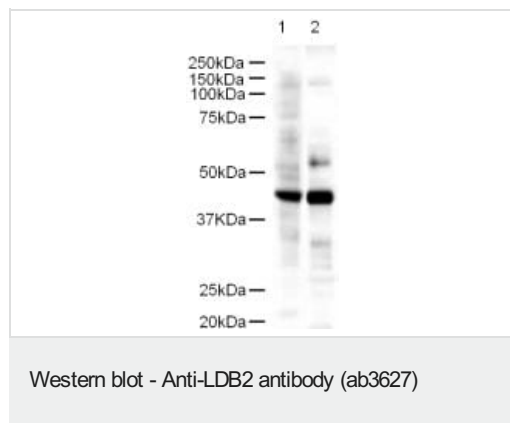
Post-translational modifications

Ubiquitinated by RLIM/RNF12, leading to its degradation by the proteasome.

Cellular localization

Nucleus.

Images



Western blot using ab3627 at 1/500.

Lane 1: Human Kidney

Lane 2: Mouse Spleen

Lysates at 18µg per lane.

Secondary ab: Goat polyclonal to Rabbit IgG H&L (HRP) Pre-Adsorbed

ab7090 (1/5000).

Exposure time: 1 minute.

Please note: All products are "FOR RESEARCH USE ONLY. NOT FOR USE IN DIAGNOSTIC PROCEDURES"

Our Abpromise to you: Quality guaranteed and expert technical support

- Replacement or refund for products not performing as stated on the datasheet
- Valid for 12 months from date of delivery
- Response to your inquiry within 24 hours
- We provide support in Chinese, English, French, German, Japanese and Spanish

- Extensive multi-media technical resources to help you
- We investigate all quality concerns to ensure our products perform to the highest standards

If the product does not perform as described on this datasheet, we will offer a refund or replacement. For full details of the Abpromise, please visit <https://www.abcam.com/abpromise> or contact our technical team.

Terms and conditions

- Guarantee only valid for products bought direct from Abcam or one of our authorized distributors