

Product datasheet

Anti-LDH-C antibody [EP1567Y] ab75999

Recombinant RabMAb

2 Images

Overview

Product name	Anti-LDH-C antibody [EP1567Y]
Description	Rabbit monoclonal [EP1567Y] to LDH-C
Host species	Rabbit
Tested applications	Suitable for: WB Unsuitable for: ICC/IF, IHC-P or IP
Species reactivity	Reacts with: Human
Immunogen	Synthetic peptide within Human LDH-C aa 1-100 (N terminal). The exact sequence is proprietary.
Positive control	Human testis lysate
General notes	<p>This product is a recombinant monoclonal antibody, which offers several advantages including:</p> <ul style="list-style-type: none"> - High batch-to-batch consistency and reproducibility - Improved sensitivity and specificity - Long-term security of supply - Animal-free production <p>For more information see here.</p> <p>Our RabMAb[®] technology is a patented hybridoma-based technology for making rabbit monoclonal antibodies. For details on our patents, please refer to RabMAb[®] patents.</p> <p>Mouse, Rat: We have preliminary internal testing data to indicate this antibody may not react with these species. Please contact us for more information.</p>

Properties

Form	Liquid
Storage instructions	Shipped at 4°C. Upon delivery aliquot and store at -20°C. Avoid freeze / thaw cycles.
Storage buffer	<p>pH: 7.20</p> <p>Preservative: 0.05% Sodium azide</p> <p>Constituents: 0.1% BSA, 40% Glycerol (glycerin, glycerine), 9.85% Tris glycine, 50% Tissue culture supernatant</p>
Purity	Protein A purified
Clonality	Monoclonal

Clone number EP1567Y
Isotype IgG

Applications

The Abpromise guarantee Our **Abpromise guarantee** covers the use of ab75999 in the following tested applications. The application notes include recommended starting dilutions; optimal dilutions/concentrations should be determined by the end user.

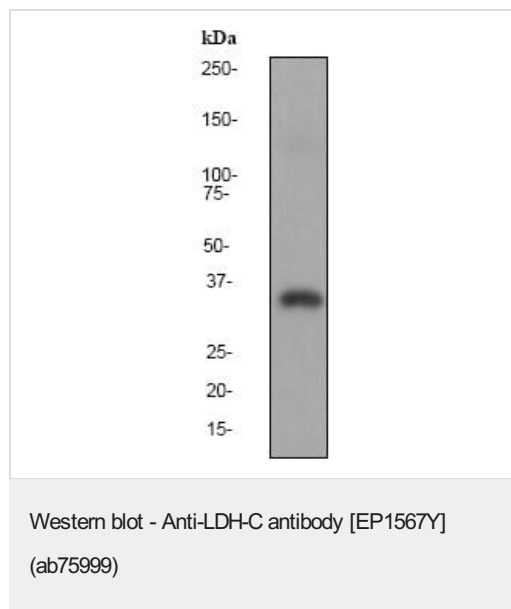
Application	Abreviews	Notes
WB		1/2000 - 1/5000. Predicted molecular weight: 35 kDa.

Application notes Is unsuitable for ICC/IF, IHC-P or IP.

Target

Function Possible role in sperm motility.
Pathway Fermentation; pyruvate fermentation to lactate; (S)-lactate from pyruvate: step 1/1.
Sequence similarities Belongs to the LDH/MDH superfamily. LDH family.
Cellular localization Cytoplasm.

Images



Anti-LDH-C antibody [EP1567Y] (ab75999) at 1/5000 dilution + human testis lysate at 10 µg

Secondary

HRP labelled goat anti rabbit at 1/2000 dilution

Predicted band size: 35 kDa

Observed band size: 35 kDa

Why choose a recombinant antibody?



Research with confidence
Consistent and reproducible results



Long-term and scalable supply
Recombinant technology



Success from the first experiment
Confirmed specificity



Ethical standards compliant
Animal-free production

Anti-LDH-C antibody [EP1567Y] (ab75999)

Please note: All products are "FOR RESEARCH USE ONLY. NOT FOR USE IN DIAGNOSTIC PROCEDURES"

Our Abpromise to you: Quality guaranteed and expert technical support

- Replacement or refund for products not performing as stated on the datasheet
- Valid for 12 months from date of delivery
- Response to your inquiry within 24 hours
- We provide support in Chinese, English, French, German, Japanese and Spanish
- Extensive multi-media technical resources to help you
- We investigate all quality concerns to ensure our products perform to the highest standards

If the product does not perform as described on this datasheet, we will offer a refund or replacement. For full details of the Abpromise, please visit <https://www.abcam.com/abpromise> or contact our technical team.

Terms and conditions

- Guarantee only valid for products bought direct from Abcam or one of our authorized distributors