

## Product datasheet

### Anti-LDH-C antibody [EP1746Y] **ab52747**

RabMAb

**8 References**   [3 Images](#)

#### Overview

<b>Product name</b>	Anti-LDH-C antibody [EP1746Y]
<b>Description</b>	Rabbit monoclonal [EP1746Y] to LDH-C
<b>Host species</b>	Rabbit
<b>Specificity</b>	This antibody reacts with Lactate Dehydrogenase C / LDH-C. The immunogen sequence is 100% identical to Lactate Dehydrogenase C / LDH-C, but there is the possibility of cross-reactivity for lactate dehydrogenase A and lactate dehydrogenase B at 69% and 82%, respectively.
<b>Tested applications</b>	<b>Suitable for:</b> WB, IHC-P, Flow Cyt (Intra) <b>Unsuitable for:</b> ICC/IF or IP
<b>Species reactivity</b>	<b>Reacts with:</b> Human
<b>Immunogen</b>	Synthetic peptide within Human LDH-C aa 300 to the C-terminus (C terminal). The exact sequence is proprietary. Database link: <b>P07864</b>
<b>Positive control</b>	WB: Human testis lysate. IHC-P: Human testis carcinoma tissue. Flow Cyt (intra): SK-BR-3 cells
<b>General notes</b>	<p>Our RabMAb<sup>®</sup> technology is a patented hybridoma-based technology for making rabbit monoclonal antibodies. For details on our patents, please refer to <b><u>RabMAb<sup>®</sup> patents</u></b>.</p> <p>The Life Science industry has been in the grips of a reproducibility crisis for a number of years. Abcam is leading the way in addressing this with our range of recombinant monoclonal antibodies and knockout edited cell lines for gold-standard validation. Please check that this product meets your needs before purchasing.</p> <p>If you have any questions, special requirements or concerns, please send us an inquiry and/or contact our Support team ahead of purchase. Recommended alternatives for this product can be found below, along with publications, customer reviews and Q&amp;As</p> <p>Mouse, Rat: We have preliminary internal testing data to indicate this antibody may not react with these species. Please contact us for more information.</p>

#### Properties

<b>Form</b>	Liquid
<b>Storage instructions</b>	Shipped at 4°C. Upon delivery aliquot and store at -20°C. Avoid freeze / thaw cycles.

<b>Storage buffer</b>	pH: 7.20 Preservative: 0.05% Sodium azide Constituents: 0.1% BSA, 40% Glycerol (glycerin, glycerine), 9.85% Tris glycine, 50% Tissue culture supernatant
<b>Purity</b>	Tissue culture supernatant
<b>Clonality</b>	Monoclonal
<b>Clone number</b>	EP1746Y
<b>Isotype</b>	IgG

## Applications

**The Abpromise guarantee** Our **Abpromise guarantee** covers the use of ab52747 in the following tested applications. The application notes include recommended starting dilutions; optimal dilutions/concentrations should be determined by the end user.

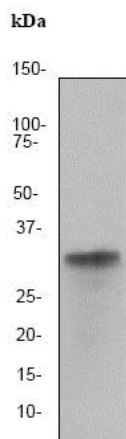
Application	Abreviews	Notes
<b>WB</b>		1/10000 - 1/20000. Detects a band of approximately 31 kDa (predicted molecular weight: 36 kDa).
<b>IHC-P</b>		Use at an assay dependent concentration. Perform heat mediated antigen retrieval with citrate buffer pH 6 before commencing with IHC staining protocol.
<b>Flow Cyt (Intra)</b>		1/40. <b>ab172730</b> - Rabbit monoclonal IgG, is suitable for use as an isotype control with this antibody.

**Application notes** Is unsuitable for ICC/IF or IP.

## Target

<b>Function</b>	Possible role in sperm motility.
<b>Pathway</b>	Fermentation; pyruvate fermentation to lactate; (S)-lactate from pyruvate: step 1/1.
<b>Sequence similarities</b>	Belongs to the LDH/MDH superfamily. LDH family.
<b>Cellular localization</b>	Cytoplasm.

## Images



Western blot - Anti-LDH-C antibody [EP1746Y] (ab52747)

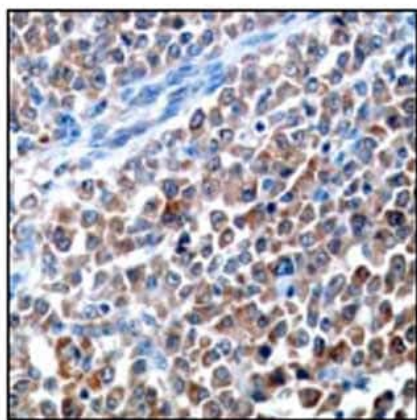
Anti-LDH-C antibody [EP1746Y] (ab52747) at 1/20000 dilution + Human testis lysate at 10 µg

### Secondary

Goat anti-rabbit HRP labeled at 1/2000 dilution

**Predicted band size:** 36 kDa

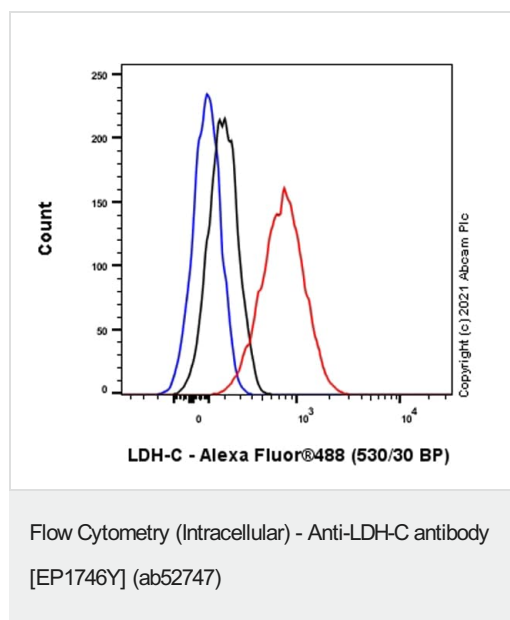
**Observed band size:** 31 kDa



Immunohistochemistry (Formalin/PFA-fixed paraffin-embedded sections) - Anti-LDH-C antibody [EP1746Y] (ab52747)

Immunohistochemical staining of paraffin-embedded human testis carcinoma using ab52747 at a 1/50 dilution.

Perform heat mediated antigen retrieval with citrate buffer pH 6 before commencing with IHC staining protocol.



Flow Cytometry analysis of SK-BR-3 (Human breast adenocarcinoma epithelial cell) cells labeling LDH-C with ab52747 at 1/40 dilution (10 µg/mL) (Red). Cells were fixed with 4% Paraformaldehyde and permeabilised with 90% Methanol. A Goat anti rabbit IgG (Alexa Fluor® 488, **ab150077**) secondary antibody was used at 1/2000. Isotype control - Rabbit monoclonal IgG (Black). Unlabeled control - Cell without incubation with primary antibody and secondary antibody (Blue).

**Please note:** All products are "FOR RESEARCH USE ONLY. NOT FOR USE IN DIAGNOSTIC PROCEDURES"

### Our Abpromise to you: Quality guaranteed and expert technical support

- Replacement or refund for products not performing as stated on the datasheet
- Valid for 12 months from date of delivery
- Response to your inquiry within 24 hours
- We provide support in Chinese, English, French, German, Japanese and Spanish
- Extensive multi-media technical resources to help you
- We investigate all quality concerns to ensure our products perform to the highest standards

If the product does not perform as described on this datasheet, we will offer a refund or replacement. For full details of the Abpromise, please visit <https://www.abcam.com/abpromise> or contact our technical team.

### Terms and conditions

- Guarantee only valid for products bought direct from Abcam or one of our authorized distributors