


### Anti-LDL Receptor antibody ab240748

1 Image

#### Overview

<b>Product name</b>	Anti-LDL Receptor antibody
<b>Description</b>	Rabbit polyclonal to LDL Receptor
<b>Host species</b>	Rabbit
<b>Tested applications</b>	<b>Suitable for:</b> IP
<b>Species reactivity</b>	<b>Reacts with:</b> Human <b>Predicted to work with:</b> Mouse, Rat, Rabbit, Cow 
<b>Immunogen</b>	Synthetic peptide within Human LDL Receptor aa 810-860. The exact sequence is proprietary. (NP_000518.1). Database link: <a href="#">P01130</a>
<b>Positive control</b>	IP: HeLa whole cell lysate.
<b>General notes</b>	<p>The Life Science industry has been in the grips of a reproducibility crisis for a number of years. Abcam is leading the way in addressing this with our range of recombinant monoclonal antibodies and knockout edited cell lines for gold-standard validation. Please check that this product meets your needs before purchasing.</p> <p>If you have any questions, special requirements or concerns, please send us an inquiry and/or contact our Support team ahead of purchase. Recommended alternatives for this product can be found below, along with publications, customer reviews and Q&amp;As</p>

#### Properties

<b>Form</b>	Liquid
<b>Storage instructions</b>	Shipped at 4°C. Store at +4°C short term (1-2 weeks). Upon delivery aliquot. Store at -20°C long term. Avoid freeze / thaw cycle.
<b>Storage buffer</b>	pH: 7 Preservative: 0.09% Sodium azide Constituent: Tris citrate/phosphate  pH 7 to 8
<b>Purity</b>	Affinity purified
<b>Clonality</b>	Polyclonal
<b>Isotype</b>	IgG

## Applications

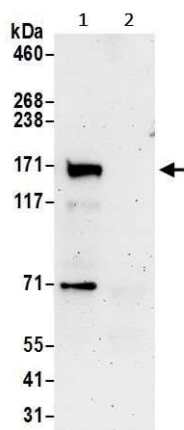
**The Abpromise guarantee** Our **Abpromise guarantee** covers the use of ab240748 in the following tested applications. The application notes include recommended starting dilutions; optimal dilutions/concentrations should be determined by the end user.

Application	Abreviews	Notes
IP		Use at 2-10 µg/mg of lysate.

## Target

<b>Function</b>	Binds LDL, the major cholesterol-carrying lipoprotein of plasma, and transports it into cells by endocytosis. In order to be internalized, the receptor-ligand complexes must first cluster into clathrin-coated pits. In case of HIV-1 infection, functions as a receptor for extracellular Tat in neurons, mediating its internalization in uninfected cells.
<b>Involvement in disease</b>	Defects in LDLR are the cause of familial hypercholesterolemia (FH) [MIM:143890]; a common autosomal semi-dominant disease that affects about 1 in 500 individuals. The receptor defect impairs the catabolism of LDL, and the resultant elevation in plasma LDL-cholesterol promotes deposition of cholesterol in the skin (xanthelasma), tendons (xanthomas), and coronary arteries (atherosclerosis).
<b>Sequence similarities</b>	Belongs to the LDLR family. Contains 3 EGF-like domains. Contains 7 LDL-receptor class A domains. Contains 6 LDL-receptor class B repeats.
<b>Post-translational modifications</b>	N- and O-glycosylated. Ubiquitinated by MYLIP leading to degradation.
<b>Cellular localization</b>	Cell membrane. Endomembrane system. Membrane > clathrin-coated pit. Found distributed from the plasma membrane to intracellular compartments.

## Images



Immunoprecipitation - Anti-LDL Receptor antibody  
(ab240748)

LDL Receptor was immunoprecipitated from HeLa (human epithelial cell line from cervix adenocarcinoma) whole cell lysate (1 mg for IP, 20% of IP loaded) with ab240748 at 6 µg/reaction. Western blot was performed from the immunoprecipitate using ab240748 at 1 µg/ml.

**Lane 1:** ab240748 IP in HeLa whole cell lysate.

**Lane 2:** Control IgG IP in HeLa whole cell lysate.

Detection: Chemiluminescence with exposure time of 3 minutes.

Lysate prepared using NETN buffer.

**Please note:** All products are "FOR RESEARCH USE ONLY. NOT FOR USE IN DIAGNOSTIC PROCEDURES"

### Our Abpromise to you: Quality guaranteed and expert technical support

- Replacement or refund for products not performing as stated on the datasheet
- Valid for 12 months from date of delivery
- Response to your inquiry within 24 hours
- We provide support in Chinese, English, French, German, Japanese and Spanish
- Extensive multi-media technical resources to help you
- We investigate all quality concerns to ensure our products perform to the highest standards

If the product does not perform as described on this datasheet, we will offer a refund or replacement. For full details of the Abpromise, please visit <https://www.abcam.com/abpromise> or contact our technical team.

### Terms and conditions

- Guarantee only valid for products bought direct from Abcam or one of our authorized distributors