

Product datasheet

Anti-LEF1 antibody [EP2030Y] ab53293

KO VALIDATED

Recombinant

RabMAb

★★★★☆ 2 Abreviews 14 References 9 Images

Overview

Product name	Anti-LEF1 antibody [EP2030Y]
Description	Rabbit monoclonal [EP2030Y] to LEF1
Host species	Rabbit
Tested applications	Suitable for: ICC/IF, Flow Cyt (Intra), WB, IHC-P
Species reactivity	Reacts with: Human
Immunogen	Synthetic peptide. This information is proprietary to Abcam and/or its suppliers.
Positive control	ICC/IF: Ramos and Jurkat cells. IHC-P: Human colon adenocarcinoma, human tonsil tissue. Flow Cyt (intra): Jurkat cells. WB: Jurkat cell lysate
General notes	<p>This product is a recombinant monoclonal antibody, which offers several advantages including:</p> <ul style="list-style-type: none"> - High batch-to-batch consistency and reproducibility - Improved sensitivity and specificity - Long-term security of supply - Animal-free production <p>For more information see here.</p> <p>Our RabMAb® technology is a patented hybridoma-based technology for making rabbit monoclonal antibodies. For details on our patents, please refer to RabMAb® patents.</p> <p>Mouse, Rat: We have preliminary internal testing data to indicate this antibody may not react with these species. Please contact us for more information.</p>

Properties

Form	Liquid
Storage instructions	Shipped at 4°C. Store at +4°C short term (1-2 weeks). Upon delivery aliquot. Store at -20°C long term. Avoid freeze / thaw cycle.
Storage buffer	<p>pH: 7.20</p> <p>Preservative: 0.01% Sodium azide</p> <p>Constituents: 59% PBS, 40% Glycerol (glycerin, glycerine), 0.05% BSA</p>
Purity	Protein A purified
Clonality	Monoclonal

Clone number	EP2030Y
Isotype	IgG

Applications

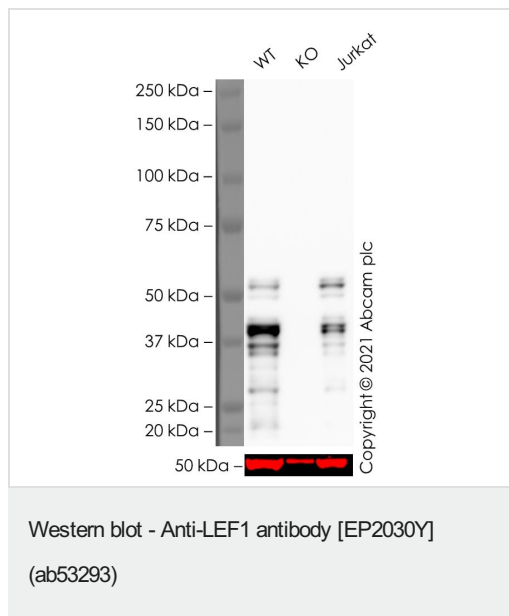
The Abpromise guarantee Our **Abpromise guarantee** covers the use of ab53293 in the following tested applications. The application notes include recommended starting dilutions; optimal dilutions/concentrations should be determined by the end user.

Application	Abreviews	Notes
ICC/IF		1/50 - 1/250.
Flow Cyt (Intra)		1/20. ab172730 - Rabbit monoclonal IgG, is suitable for use as an isotype control with this antibody.
WB		1/5000. Detects a band of approximately 55 kDa (predicted molecular weight: 44 kDa). For unpurified format use at 1/1000 dilution.
IHC-P	★★★★★ (1)	1/50. Perform heat mediated antigen retrieval with Tris/EDTA buffer pH 9.0 before commencing with IHC staining protocol. See IHC antigen retrieval protocols .

Target

Function	Participates in the Wnt signaling pathway. Activates transcription of target genes in the presence of CTNNB1 and EP300. May play a role in hair cell differentiation and follicle morphogenesis. TLE1, TLE2, TLE3 and TLE4 repress transactivation mediated by LEF1 and CTNNB1. Regulates T-cell receptor alpha enhancer function. Binds DNA in a sequence-specific manner. PIAG antagonizes both Wnt-dependent and Wnt-independent activation by LEF1 (By similarity). Isoform 3 lacks the CTNNB1 interaction domain and may be an antagonist for Wnt signaling. Isoform 5 transcriptionally activates the fibronectin promoter, binds to and represses transcription from the E-cadherin promoter in a CTNNB1-independent manner, and is involved in reducing cellular aggregation and increasing cell migration of pancreatic cancer cells. Isoform 1 transcriptionally activates MYC and CCND1 expression and enhances proliferation of pancreatic tumor cells.
Tissue specificity	Detected in thymus. Not detected in normal colon, but highly expressed in colon cancer biopsies and colon cancer cell lines. Expressed in several pancreatic tumors and weakly expressed in normal pancreatic tissue. Isoforms 1 and 5 are detected in several pancreatic cell lines.
Sequence similarities	Belongs to the TCF/LEF family. Contains 1 HMG box DNA-binding domain.
Domain	Proline-rich and acidic regions are implicated in the activation functions of RNA polymerase II transcription factors.
Cellular localization	Nucleus. Found in nuclear bodies upon PIASG binding.

Images



All lanes : Anti-LEF1 antibody [EP2030Y] (ab53293) at 1/5000 dilution

Lane 1 : Wild-type Jurkat cell lysate at 40 µg

Lane 2 : Lef1 knockout Jurkat cell lysate at 40 µg

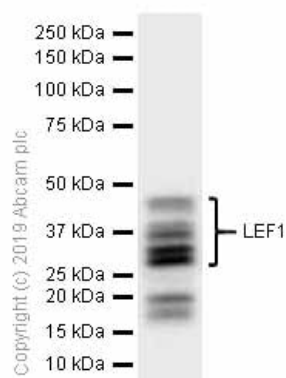
Lane 3 : Jurkat cell lysate at 20 µg

Performed under reducing conditions.

Predicted band size: 44 kDa

Observed band size: 40 kDa

False colour image of Western blot: Anti-LEF1 antibody [EP2030Y] staining at 1/5000 dilution, shown in black; Mouse anti-Alpha Tubulin [DM1A] ([ab7291](#)) loading control staining at 1/20000 dilution, shown in red. In Western blot, ab53293 was shown to bind specifically to LEF1. A band was observed at 40/53 kDa in wild-type Jurkat cell lysates with no signal observed at this size in Lef1 knockout cell line [ab274898](#) (knockout cell lysate [ab274956](#)). To generate this image, wild-type and Lef1 knockout Jurkat cell lysates were analysed. First, samples were run on an SDS-PAGE gel then transferred onto a nitrocellulose membrane. Membranes were blocked in 3% milk in TBS-0.1 % Tween[®] 20 (TBS-T) before incubation with primary antibodies overnight at 4°C. Blots were washed four times in TBS-T, incubated with secondary antibodies for 1 h at room temperature, washed again four times before development with Optiblot (ECL reagent [ab133456](#)) and imaged with 8 minutes exposure time. Secondary antibodies used were HRP conjugated Goat anti-Rabbit (H+L) and Goat anti-Mouse IgG H&L (IRDye[®] 680RD) preabsorbed ([ab216776](#)) at 1/20000 dilution.



Western blot - Anti-LEF1 antibody [EP2030Y]
(ab53293)

Anti-LEF1 antibody [EP2030Y] (ab53293) at 1/5000 dilution +
Jurkat (Human T cell leukemia T lymphocyte) whole cell lysates at
15 µg

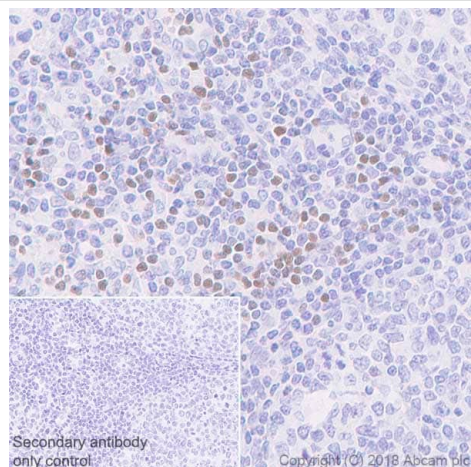
Secondary

Goat Anti-Rabbit IgG H&L (HRP) ([ab97051](#)) at 1/20000 dilution

Predicted band size: 44 kDa

Observed band size: 23-44 kDa

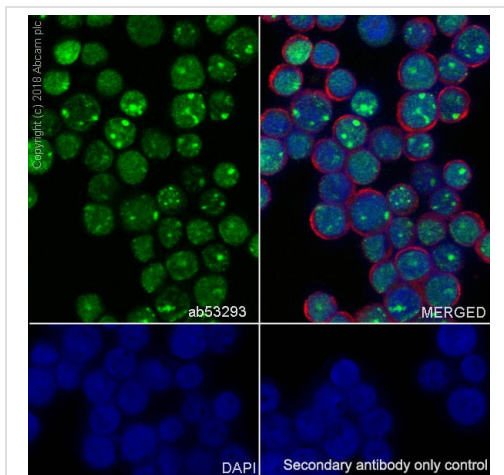
This antibody recognizes all 7 LEF1 isoforms with the MW ranging
from 23 to 44 KD based on immunogen blast.



Immunohistochemistry (Formalin/PFA-fixed paraffin-
embedded sections) - Anti-LEF1 antibody
[EP2030Y] (ab53293)

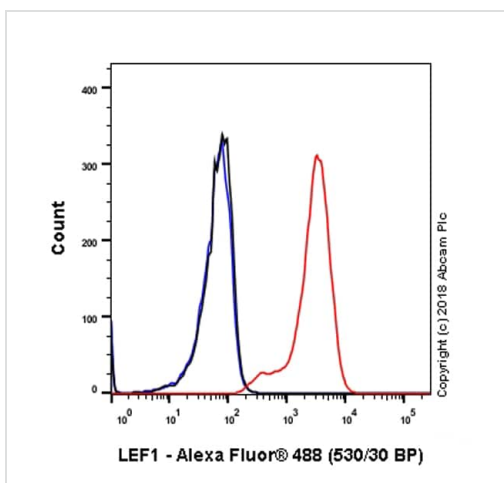
Immunohistochemistry (Formalin/PFA-fixed paraffin-embedded
sections) analysis of Human tonsil tissue sections labeling LEF1
with purified ab53293 at 1/50 dilution (1.94 µg/ml). Heat mediated
antigen retrieval was performed using heat mediated antigen
retrieval using [ab93684](#) (Tris/EDTA buffer, pH 9.0).

ImmunoHistoProbe one step HRP Polymer (ready to use) was used
as the secondary antibody. Negative control: PBS instead of the
primary antibody. Hematoxylin was used as a counterstain.



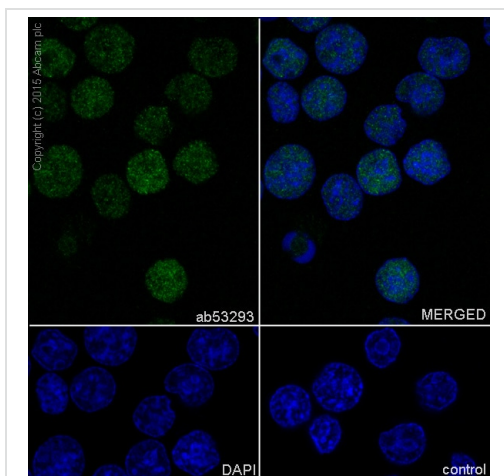
Immunocytochemistry/ Immunofluorescence - Anti-LEF1 antibody [EP2030Y] (ab53293)

Immunocytochemistry/ Immunofluorescence analysis of Jurkat (Human T cell leukemia T lymphocyte) cells labeling LEF1 with purified ab53293 at 1/50 dilution (2.0 µg/ml). Cells were fixed in 100% Methanol. Cells were counterstained with **ab195889** Anti-alpha Tubulin antibody [DM1A] - Microtubule Marker (Alexa Fluor® 594) at 1:200 (2.5 µg/ml). Goat anti rabbit IgG (Alexa Fluor® 488, **ab150077**) was used as the secondary antibody at 1/1000 (2 µg/ml) dilution. DAPI (blue) was used as nuclear counterstain. PBS instead of the primary antibody was used as the secondary antibody only control.



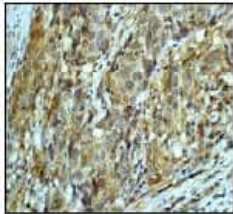
Flow Cytometry (Intracellular) - Anti-LEF1 antibody [EP2030Y] (ab53293)

Intracellular Flow Cytometry analysis of Jurkat (Human T cell leukemia T lymphocyte) cells labeling LEF1 with purified ab53293 at 1/20 dilution (10µg/ml) (red). Cells were fixed with 4% Paraformaldehyde and permeabilised with 90% Methanol. A Goat anti rabbit IgG (Alexa Fluor® 488, **ab150077**) secondary antibody was used at 1/2000. Isotype control - Rabbit monoclonal IgG (Black). Unlabeled control - Cell without incubation with primary antibody and secondary antibody (Blue).



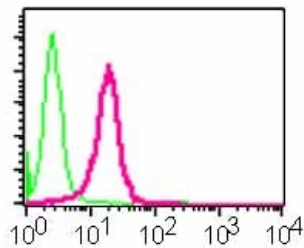
Immunocytochemistry/ Immunofluorescence - Anti-LEF1 antibody [EP2030Y] (ab53293)

ab53293 (unpurified) staining LEF1 in RAMOS (human Burkitt's lymphoma) cells by ICC/IF (Immunocytochemistry/immunofluorescence). Cells were fixed with 4% paraformaldehyde and permeabilized with 0.1% Triton X-100. Samples were incubated with primary antibody at a dilution of 1/500. A goat anti rabbit IgG (Alexa Fluor® 488) (**ab150077**) was used as the secondary antibody at a dilution of 1/1000. DAPI was used as a nuclear counterstain and the negative control was PBS only.



Paraffin-embedded human colon adenocarcinoma tissue stained for LEF1 using ab53293 (unpurified) at 1/50 dilution in immunohistochemical analysis.

Immunohistochemistry (Formalin/PFA-fixed paraffin-embedded sections) - Anti-LEF1 antibody [EP2030Y] (ab53293)



Intracellular flow cytometric analysis of permeabilized Jurkat cells using ab53293 (unpurified) (red) or a rabbit IgG (negative) (green).

Flow Cytometry (Intracellular) - Anti-LEF1 antibody [EP2030Y] (ab53293)

Why choose a recombinant antibody?



Research with confidence
Consistent and reproducible results



Long-term and scalable supply
Recombinant technology



Success from the first experiment
Confirmed specificity



Ethical standards compliant
Animal-free production

Anti-LEF1 antibody [EP2030Y] (ab53293)

Please note: All products are "FOR RESEARCH USE ONLY. NOT FOR USE IN DIAGNOSTIC PROCEDURES"

Our Abpromise to you: Quality guaranteed and expert technical support

- Replacement or refund for products not performing as stated on the datasheet
- Valid for 12 months from date of delivery
- Response to your inquiry within 24 hours

- We provide support in Chinese, English, French, German, Japanese and Spanish
- Extensive multi-media technical resources to help you
- We investigate all quality concerns to ensure our products perform to the highest standards

If the product does not perform as described on this datasheet, we will offer a refund or replacement. For full details of the Abpromise, please visit <https://www.abcam.com/abpromise> or contact our technical team.

Terms and conditions

- Guarantee only valid for products bought direct from Abcam or one of our authorized distributors