




Product datasheet

Anti-Legumain antibody ab232870

8 Images

Overview

Product name	Anti-Legumain antibody
Description	Rabbit polyclonal to Legumain
Host species	Rabbit
Tested applications	Suitable for: IHC-P, WB
Species reactivity	Reacts with: Rat, Human Predicted to work with: Macaque monkey, Orangutan 
Immunogen	Recombinant full length protein (His-T7-tag) corresponding to Human Legumain aa 1 to the C-terminus. N-terminal tags. Expressed in E. coli. Full length mature chain including propeptide, not including signal peptide. Database link: Q99538  Run BLAST with  Run BLAST with
Positive control	WB: Recombinant human Legumain protein and rat placenta tissue. IHC-P: Human breast cancer, kidney, stomach, colorectal cancer, prostate and prostate cancer tissue.
General notes	<p>The Life Science industry has been in the grips of a reproducibility crisis for a number of years. Abcam is leading the way in addressing this with our range of recombinant monoclonal antibodies and knockout edited cell lines for gold-standard validation. Please check that this product meets your needs before purchasing.</p> <p>If you have any questions, special requirements or concerns, please send us an inquiry and/or contact our Support team ahead of purchase. Recommended alternatives for this product can be found below, along with publications, customer reviews and Q&As</p>

Properties

Form	Liquid
Storage instructions	Shipped at 4°C. Store at +4°C short term (1-2 weeks). Upon delivery aliquot. Store at -20°C long term. Avoid freeze / thaw cycle.
Storage buffer	pH: 7.40 Preservative: 0.011% Proclin 300 Constituents: 55.77% Glycerol (glycerin, glycerine), 44.219% PBS
Purity	Protein A purified
Purification notes	Antigen-specific affinity chromatography followed by Protein A affinity chromatography.

Clonality	Polyclonal
Isotype	IgG

Applications

The Abpromise guarantee Our **Abpromise guarantee** covers the use of ab232870 in the following tested applications.

The application notes include recommended starting dilutions; optimal dilutions/concentrations should be determined by the end user.

Application	Abreviews	Notes
IHC-P		Use a concentration of 5 - 20 µg/ml.
WB		Use a concentration of 0.5 - 2 µg/ml. Predicted molecular weight: 49 kDa.

Target

Function Has a strict specificity for hydrolysis of asparaginyl bonds. Can also cleave aspartyl bonds slowly, especially under acidic conditions. May be involved in the processing of proteins for MHC class II antigen presentation in the lysosomal/endosomal system.

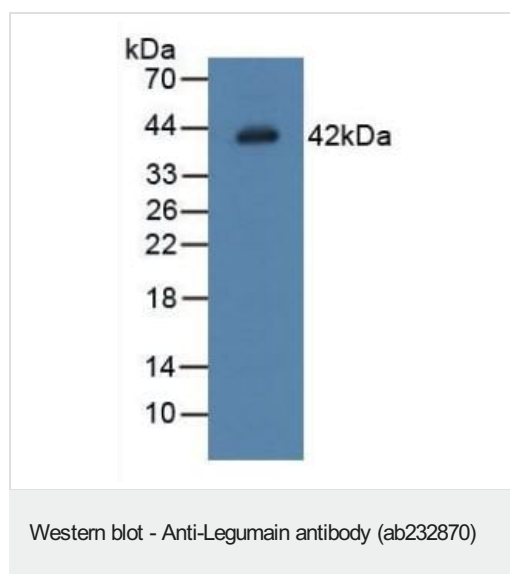
Tissue specificity Ubiquitous. Particularly abundant in kidney, heart and placenta.

Sequence similarities Belongs to the peptidase C13 family.

Post-translational modifications Glycosylated.

Cellular localization Lysosome.

Images

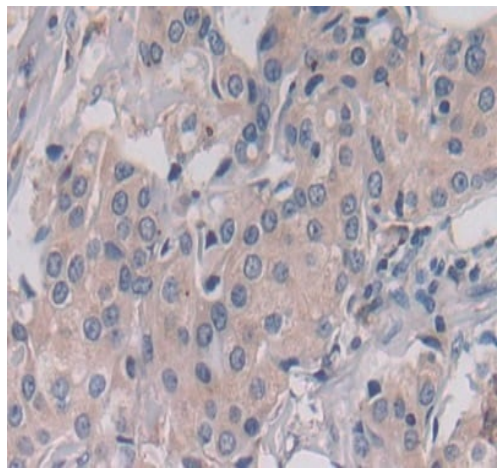


Anti-Legumain antibody (ab232870) at 1 µg/ml + Rat placenta tissue lysate

Secondary

HRP-Linked Guinea pig Anti-Rabbit at 1/2000 dilution

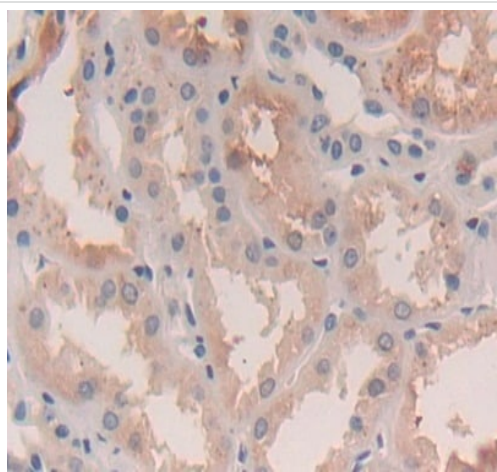
Predicted band size: 49 kDa



Immunohistochemistry (Formalin/PFA-fixed paraffin-embedded sections) - Anti-Legumain antibody (ab232870)

Formalin-fixed, paraffin-embedded human breast cancer tissue stained for Legumain using ab232870 at 30 µg/ml in immunohistochemical analysis.

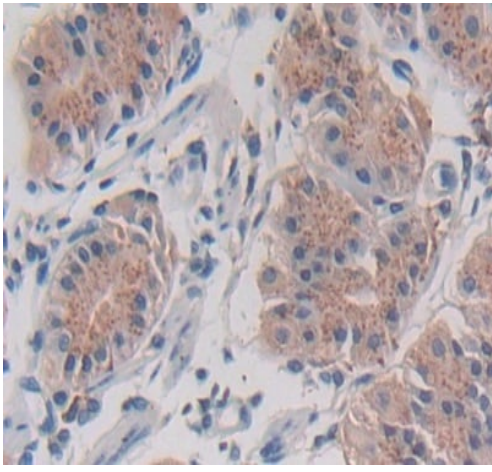
Secondary used: HRP-Linked Goat anti-Rabbit IgG Polyclonal at 2 µg/ml. DAB staining.



Immunohistochemistry (Formalin/PFA-fixed paraffin-embedded sections) - Anti-Legumain antibody (ab232870)

Formalin-fixed, paraffin-embedded human kidney tissue stained for Legumain using ab232870 at 30 µg/ml in immunohistochemical analysis.

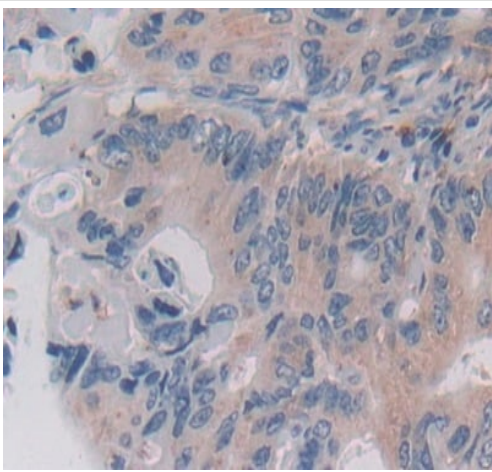
Secondary used: HRP-Linked Goat anti-Rabbit IgG Polyclonal at 2 µg/ml. DAB staining.



Immunohistochemistry (Formalin/PFA-fixed paraffin-embedded sections) - Anti-Legumain antibody (ab232870)

Formalin-fixed, paraffin-embedded human stomach tissue stained for Legumain using ab232870 at 30 $\mu\text{g/ml}$ in immunohistochemical analysis.

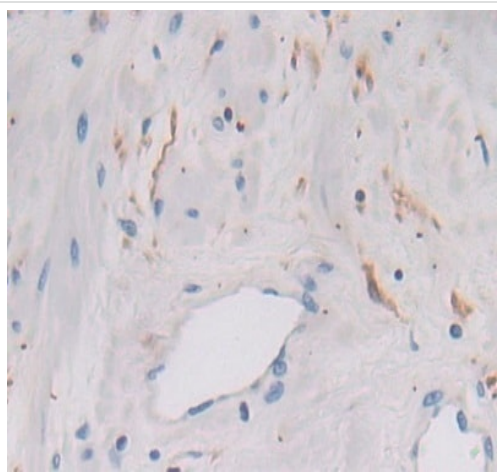
Secondary used: HRP-Linked Goat anti-Rabbit IgG Polyclonal at 2 $\mu\text{g/ml}$. DAB staining.



Immunohistochemistry (Formalin/PFA-fixed paraffin-embedded sections) - Anti-Legumain antibody (ab232870)

Formalin-fixed, paraffin-embedded human colorectal cancer tissue stained for Legumain using ab232870 at 30 $\mu\text{g/ml}$ in immunohistochemical analysis.

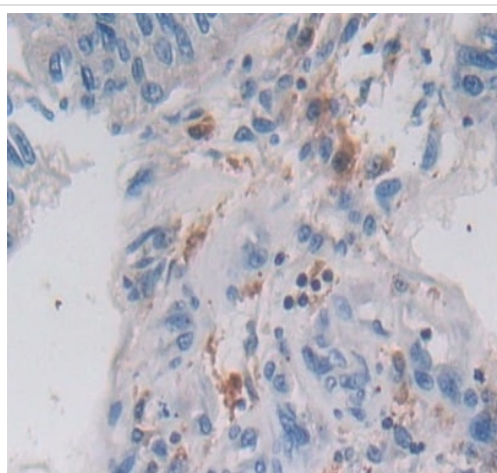
Secondary used: HRP-Linked Goat anti-Rabbit IgG Polyclonal at 2 $\mu\text{g/ml}$. DAB staining.



Immunohistochemistry (Formalin/PFA-fixed paraffin-embedded sections) - Anti-Legumain antibody (ab232870)

Formalin-fixed, paraffin-embedded human prostate tissue stained for Legumain using ab232870 at 30 µg/ml in immunohistochemical analysis.

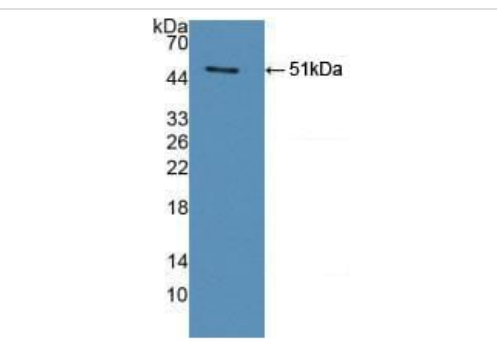
Secondary used: HRP-Linked Goat anti-Rabbit IgG Polyclonal at 2 µg/ml. DAB staining.



Immunohistochemistry (Formalin/PFA-fixed paraffin-embedded sections) - Anti-Legumain antibody (ab232870)

Formalin-fixed, paraffin-embedded human prostate cancer tissue stained for Legumain using ab232870 at 30 µg/ml in immunohistochemical analysis.

Secondary used: HRP-Linked Goat anti-Rabbit IgG Polyclonal at 2 µg/ml. DAB staining.



Western blot - Anti-Legumain antibody (ab232870)

Anti-Legumain antibody (ab232870) at 1 µg/ml + Recombinant human Legumain protein

Secondary

HRP-Linked Guinea pig Anti-Rabbit at 1/2000 dilution

Predicted band size: 49 kDa

Our Abpromise to you: Quality guaranteed and expert technical support

- Replacement or refund for products not performing as stated on the datasheet
- Valid for 12 months from date of delivery
- Response to your inquiry within 24 hours

- We provide support in Chinese, English, French, German, Japanese and Spanish
- Extensive multi-media technical resources to help you
- We investigate all quality concerns to ensure our products perform to the highest standards

If the product does not perform as described on this datasheet, we will offer a refund or replacement. For full details of the Abpromise, please visit <https://www.abcam.com/abpromise> or contact our technical team.

Terms and conditions

- Guarantee only valid for products bought direct from Abcam or one of our authorized distributors