


Product datasheet

Anti-Legumain antibody [EPR14718] ab183028

Recombinant **RabMAb**

★☆☆☆☆ [1 Abreviews](#) [4 References](#) [2 Images](#)

Overview

Product name	Anti-Legumain antibody [EPR14718]
Description	Rabbit monoclonal [EPR14718] to Legumain
Host species	Rabbit
Tested applications	Suitable for: WB
Species reactivity	Reacts with: Human Predicted to work with: Mouse, Rat 
Immunogen	Recombinant fragment. This information is proprietary to Abcam and/or its suppliers.
Positive control	Human fetal kidney lysate; JAR, HeLa and 293 cell lysates.
General notes	<p>This product is a recombinant monoclonal antibody, which offers several advantages including:</p> <ul style="list-style-type: none"> - High batch-to-batch consistency and reproducibility - Improved sensitivity and specificity - Long-term security of supply - Animal-free production <p>For more information see here.</p> <p>Our RabMAb[®] technology is a patented hybridoma-based technology for making rabbit monoclonal antibodies. For details on our patents, please refer to RabMAb[®] patents.</p>

Properties

Form	Liquid
Storage instructions	Shipped at 4°C. Store at +4°C short term (1-2 weeks). Upon delivery aliquot. Store at -20°C long term. Avoid freeze / thaw cycle.
Storage buffer	pH: 7.2 Preservative: 0.01% Sodium azide Constituents: 59% PBS, 40% Glycerol (glycerin, glycerine), 0.05% BSA
Purity	Protein A purified
Clonality	Monoclonal
Clone number	EPR14718
Isotype	IgG

Applications

The Abpromise guarantee

Our **Abpromise guarantee** covers the use of ab183028 in the following tested applications.

The application notes include recommended starting dilutions; optimal dilutions/concentrations should be determined by the end user.

Application	Abreviews	Notes
WB	★☆☆☆☆ (1)	1/10000 - 1/50000. Predicted molecular weight: 49 kDa.

Target

Function

Has a strict specificity for hydrolysis of asparaginyl bonds. Can also cleave aspartyl bonds slowly, especially under acidic conditions. May be involved in the processing of proteins for MHC class II antigen presentation in the lysosomal/endosomal system.

Tissue specificity

Ubiquitous. Particularly abundant in kidney, heart and placenta.

Sequence similarities

Belongs to the peptidase C13 family.

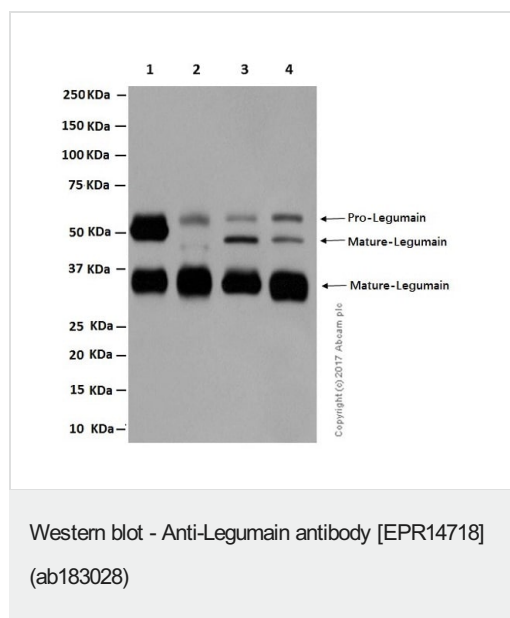
Post-translational modifications

Glycosylated.

Cellular localization

Lysosome.

Images



All lanes : Anti-Legumain antibody [EPR14718] (ab183028) at 1/10000 dilution

Lane 1 : Human fetal kidney tissue lysate

Lane 2 : JAR (human placenta choriocarcinoma cell line) whole cell lysate

Lane 3 : HeLa (human epithelial cell line from cervix adenocarcinoma) whole cell lysate

Lane 4 : HEK-293 (human epithelial cell line from embryonic kidney) whole cell lysate

Lysates/proteins at 20 µg per lane.

Predicted band size: 49 kDa

Exposure time: 3 minutes

Actual band at: 36kDa, 46kDa, 56kDa

Why choose a recombinant antibody?



Research with confidence
Consistent and reproducible results



Long-term and scalable supply
Recombinant technology



Success from the first experiment
Confirmed specificity



Ethical standards compliant
Animal-free production

Anti-Legumain antibody [EPR14718] (ab183028)

Please note: All products are "FOR RESEARCH USE ONLY. NOT FOR USE IN DIAGNOSTIC PROCEDURES"

Our Abpromise to you: Quality guaranteed and expert technical support

- Replacement or refund for products not performing as stated on the datasheet
- Valid for 12 months from date of delivery
- Response to your inquiry within 24 hours
- We provide support in Chinese, English, French, German, Japanese and Spanish
- Extensive multi-media technical resources to help you
- We investigate all quality concerns to ensure our products perform to the highest standards

If the product does not perform as described on this datasheet, we will offer a refund or replacement. For full details of the Abpromise, please visit <https://www.abcam.com/abpromise> or contact our technical team.

Terms and conditions

- Guarantee only valid for products bought direct from Abcam or one of our authorized distributors