

## Product datasheet

# Anti-Lens Fiber Cell Marker antibody [ZL-1] ab185979

★★★★★ [1 Abreviews](#) [3 References](#) [1 Image](#)

### Overview

---

<b>Product name</b>	Anti-Lens Fiber Cell Marker antibody [ZL-1]
<b>Description</b>	Mouse monoclonal [ZL-1] to Lens Fiber Cell Marker
<b>Host species</b>	Mouse
<b>Tested applications</b>	<b>Suitable for:</b> IHC-P, IHC-Fr
<b>Species reactivity</b>	<b>Reacts with:</b> Zebrafish <b>Does not react with:</b> Human
<b>Immunogen</b>	Tissue, cells or virus. This information is considered to be commercially sensitive.
<b>General notes</b>	<p>This antibody clone is manufactured by Abcam. If you require a custom buffer formulation or conjugation for your experiments, please contact <a href="mailto:orders@abcam.com">orders@abcam.com</a>.</p> <p>The Life Science industry has been in the grips of a reproducibility crisis for a number of years. Abcam is leading the way in addressing this with our range of recombinant monoclonal antibodies and knockout edited cell lines for gold-standard validation. Please check that this product meets your needs before purchasing.</p> <p>If you have any questions, special requirements or concerns, please send us an inquiry and/or contact our Support team ahead of purchase. Recommended alternatives for this product can be found below, along with publications, customer reviews and Q&amp;As</p> <p>Product was previously marketed under the MitoSciences sub-brand.</p>

### Properties

---

<b>Form</b>	Liquid
<b>Storage instructions</b>	Shipped at 4°C. Store at +4°C short term (1-2 weeks). Upon delivery aliquot. Store at -20°C long term. Avoid freeze / thaw cycle.
<b>Storage buffer</b>	pH: 7.5 Preservative: 0.02% Sodium azide Constituent: 99% HEPES buffered saline
<b>Purity</b>	SDS-PAGE
<b>Purification notes</b>	The purity of ab185979 is near homogeneity, as judged by SDS-PAGE. ab185979 was produced in vitro using hybridomas grown in serum-free medium, and then concentrated by chemical fractionation.

<b>Clonality</b>	Monoclonal
<b>Clone number</b>	ZL-1
<b>Isotype</b>	IgG1
<b>Light chain type</b>	kappa

## Applications

**The Abpromise guarantee** Our **Abpromise guarantee** covers the use of ab185979 in the following tested applications.

The application notes include recommended starting dilutions; optimal dilutions/concentrations should be determined by the end user.

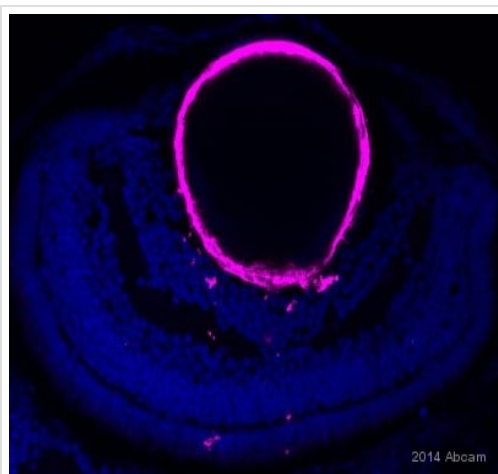
Application	Abreviews	Notes
IHC-P		Use at an assay dependent concentration.
IHC-Fr	★★★★★ (1)	Use at an assay dependent concentration.

## Target

### Relevance

The lens fibers form the bulk of the lens. They are long, thin, transparent cells, firmly packed, with diameters typically between 4-7 micrometres and lengths of up to 12 mm long. These tightly packed layers of lens fibers are referred to as laminae. The lens fibers are linked together via gap junctions and interdigitations of the cells that resemble "ball and socket" forms. The lens is split into regions depending on the age of the lens fibers of a particular layer. Moving outwards from the central, oldest layer, the lens is split into an embryonic nucleus, the fetal nucleus, the adult nucleus, and the outer cortex. New lens fibers, generated from the lens epithelium, are added to the outer cortex. Mature lens fibers have no organelles or nuclei

## Images



ab185979 staining the lens in 4 dpf zebrafish embryo retina sections by IHC-Fr. The tissue was fixed with paraformaldehyde and permeabilization was performed using 0.5% Triton X. Blocking of the sample was done with 5% BSA in PBS containing 0.5% Triton X, for 60 minutes at 23°C, followed by staining with ab185979 at 1/100 in blocking solution for 16h at 4°C. An alexa 647 conjugated goat anti-mouse polyclonal antibody at 1/500 was used as the secondary antibody. Nuclei are stained in blue with DAPI. The lens can be observed.

Immunohistochemistry (Frozen sections) - Anti-Lens  
Fiber Cell Marker antibody [ZL-1] (ab185979)

This image is courtesy of an Abreview submitted by Dr Ryan MacDonald

**Please note:** All products are "FOR RESEARCH USE ONLY. NOT FOR USE IN DIAGNOSTIC PROCEDURES"

### **Our Abpromise to you: Quality guaranteed and expert technical support**

---

- Replacement or refund for products not performing as stated on the datasheet
- Valid for 12 months from date of delivery
- Response to your inquiry within 24 hours
  
- We provide support in Chinese, English, French, German, Japanese and Spanish
- Extensive multi-media technical resources to help you
- We investigate all quality concerns to ensure our products perform to the highest standards

If the product does not perform as described on this datasheet, we will offer a refund or replacement. For full details of the Abpromise, please visit <https://www.abcam.com/abpromise> or contact our technical team.

### **Terms and conditions**

---

- Guarantee only valid for products bought direct from Abcam or one of our authorized distributors